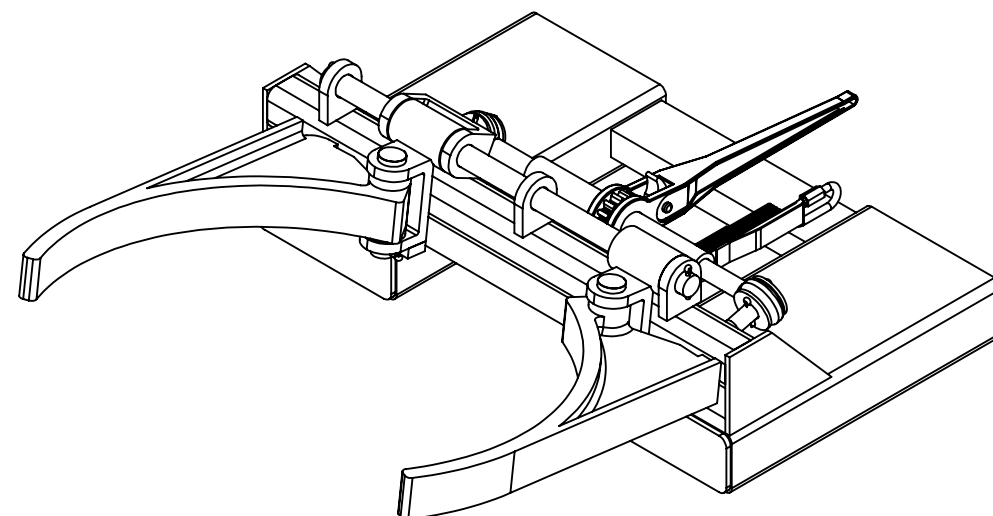
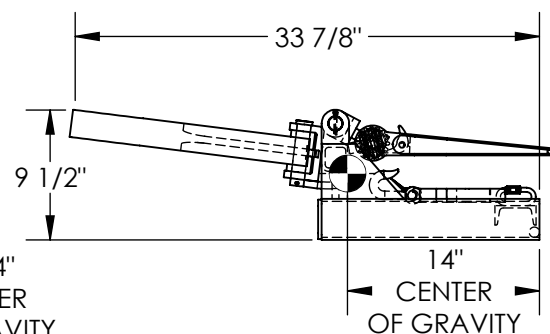
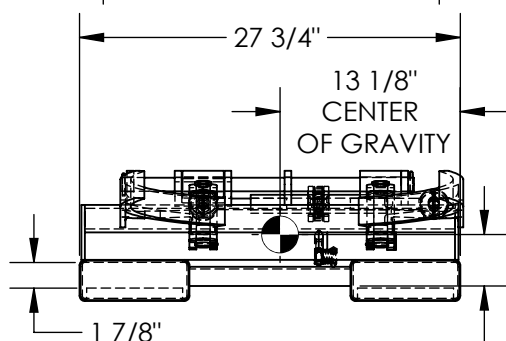
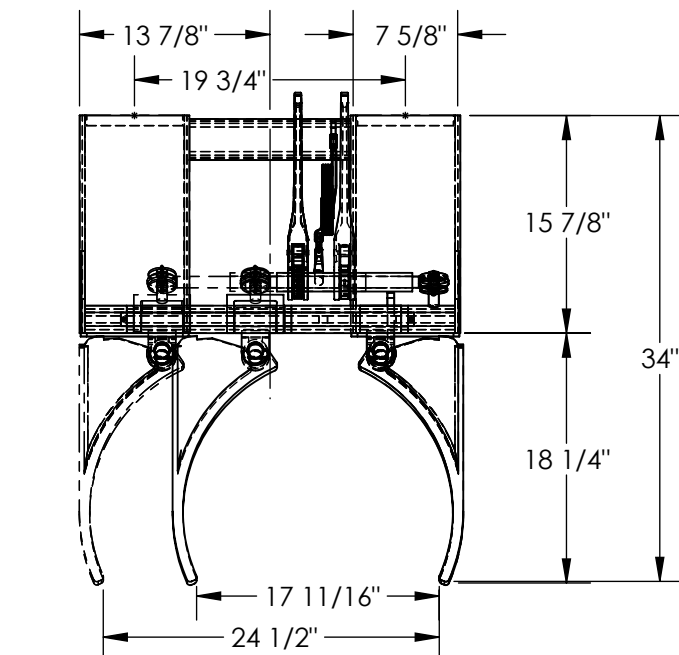


SPRING GRIP FORK MOUNTED DRUM GRIPPER - DGS-AG

APPROX WEIGHT: 126.04 lbs.
DOES NOT INCLUDE WEIGHT OF POWER OR PACKAGING!!!

*** ANY ADDITIONS, DELETIONS, OR OMISSIONS MUST BE CORRECTED ON THIS DRAWING AS THIS DRAWING WILL BE CONSIDERED ALL INCLUSIVE ***

ALL GRAPHICS PROVIDED ARE FOR REFERENCE ONLY. IF CERTAIN DIMENSIONS ARE CRITICAL PLEASE VERIFY THOSE DIMENSIONS WITH YOUR SALESPERSON



STANDARD FEATURES

- MODEL NUMBER IS DGS-AG
 - USED WITH STEEL, PLASTIC, & FIBER DRUMS
 - ADJUSTABLE-STYLE DESIGN WORKS FOR 30, 55 & 85 GAL DRUMS
 - MANUAL RATCHET GRIPPING MECHANISM
 - ARMS ADJUSTABLE FROM 17 11/16" TO 24 1/2" ARMS FOLD UP FOR STORAGE
 - FORK POCKET C-C = 19 3/4" FORK POCKET SIZE IS 7 5/8" W X 1 7/8" H
 - 1,500 LBS CAPACITY- STEEL & FIBER DRUMS
 - 1,000 LBS CAPACITY- PLASTIC DRUMS
 - TOUGH BAKED IN POWDER COAT BLACK FINISH
 - LOST LOAD IS 130 LBS (APPROX)
 - EFFECTIVE THICKNESS IS FORK LENGTH MINUS 15 7/8"
- NEVER EXCEED LOAD CENTER RATING PER FORK TRUCK
MANUFACTURER'S GUIDELINES. DO NOT USE THIS FORK TRUCK
ATTACHEMENT IF LOAD WILL EXCEED FORK TRUCK MANUFACTURER'S
LOAD CENTER RATING.

SPECIAL FEATURES

NONE

DIMENSION TOLERANCE $\pm 1/4"$

I, THE UNDERSIGNED, AGREE THAT THE PRODUCT AS REPRESENTED SATISFIES DESIGN AND DIMENSION REQUIREMENTS. I ALSO ACKNOWLEDGE MY DUTY TO CONFIRM PRODUCT AND INSTALLATION COMPLIANCE WITH ALL APPLICABLE FEDERAL, STATE AND LOCAL REGULATIONS AND STANDARDS.

UNITS REQUIRING APPROVAL DRAWINGS OR MODIFIED ARE NON-RETURNABLE

[] As drawn [] As marked

Signed: _____ Date: _____

Printed Name: _____

LEAD TIME WILL START UPON RECEIPT OF SIGNED APPROVAL DRAWING

APPROVAL

DISTRIBUTOR'S NAME:		P.O.#
VESTIL MANUFACTURING		X
DRAWN BY: WHR		W.O.#
DATE: 11/2/2011		X
REFERENCE: X	SCALE: 1:14	SALES: X
QUOTED LEAD TIME: X	QUOTE # X	FILE NAME: 40-007-048