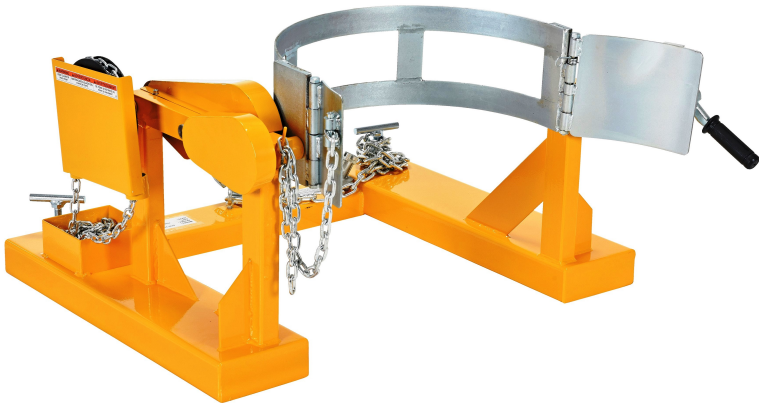


Instruction Manual

DRUM LIFTER/ROTATOR

**Model Number: DCR-205-15-I
DCR-205-8-I**



Note: The Owner/Operator must read carefully and understand all the information presented in this manual before using this device.

Contents

1.	Figure and Parameter.....	1
	1.2 DCR-205-15 (1500 lbs)	1
	1.4 DCR-205-15 Figure	3
2.	Part Name.....	5
3.	Notice and Warning.....	5
4.	Operating Instructions.....	5
5.	Exploded View.....	7
	5.2 DCR-205-15	8
6.	Parts List.....	9
	6.2 DCR-205-15	10

THANK YOU FOR USING THIS FORKLIFT-KARRIER. FOR YOUR SAFETY AND CORRECT OPERATION, PLEASE CAREFULLY READ THIS INSTRUCTION BEFORE USING IT.

NOTE: All of the information reported herein is based on data available at the moment of printing. The factory reserves the right to modify its own products at any moment without notice and incurring in any sanction. So it is suggested to always verify possible updates.

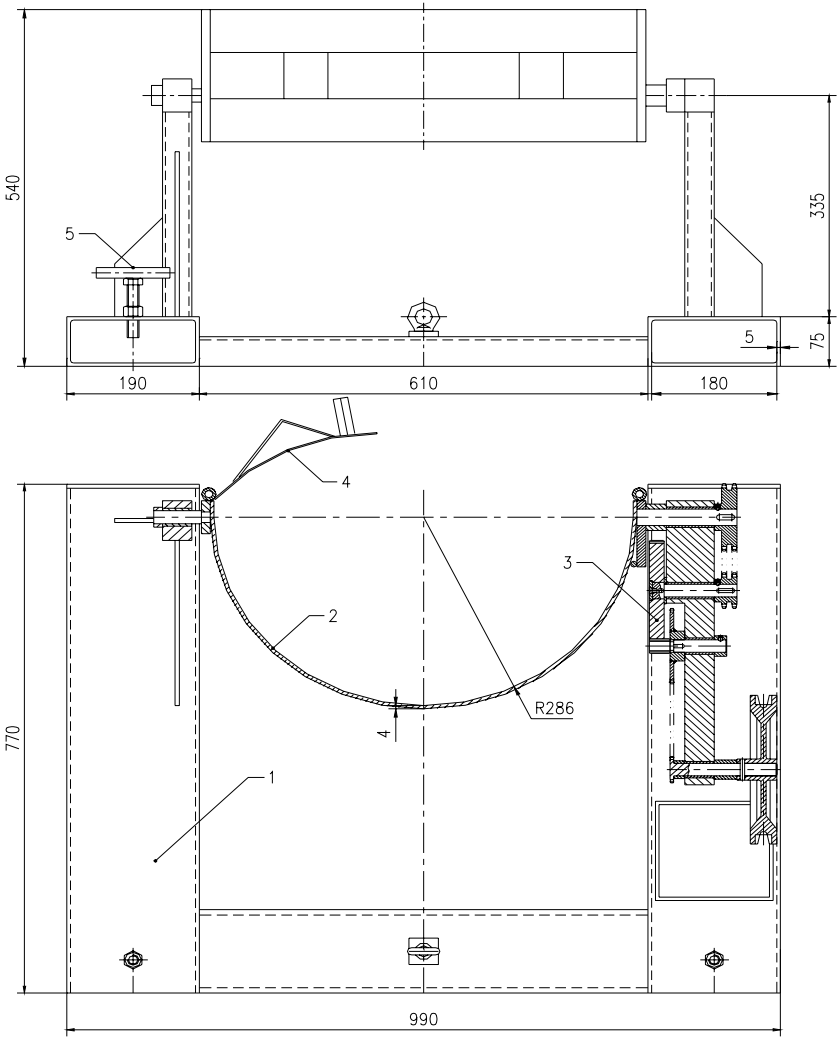
This series are used to clamp the drum. It can unload, transport and stack the drum, and also can spill the oil. It is used widely for the factory, storage, dock and port.

1. FIGURE AND PARAMETER

1.2 DCR-205-15-I (1500 lbs)

Capacity (lbs)	Total Length	Total Width	Total Height	Fork width	Hoop Radius	Net Weight
1500	39" (900mm)	30.31" (900mm)	21¼" (540mm)	7½" (190mm)	R11¼" (R286mm)	214 lbs (97 kgs)

1.4 DCR-205-15-I



2. PART NAME

- (1) Frame assembly
- (2) Drum hoop
- (3) Gear driver assembly
- (4) Drum clamp assembly
- (5) Fork tighten bolt

3. NOTICE AND WARNING

- (1) Do not use this product when it go wrong and need to be repaired.
- (2) Do not stand under any place of forklift when it is lifted
- (3) Do not overload this drum lifter beyond its rated capacity.
- (4) The hoop must clamp the drum middle position when lift the drum.
- (5) The location of drum should be lower when it do not need work.
- (6) The drum should be vertical and can not hit with the ground to avoid damaging the machinery when the forklift is moving.

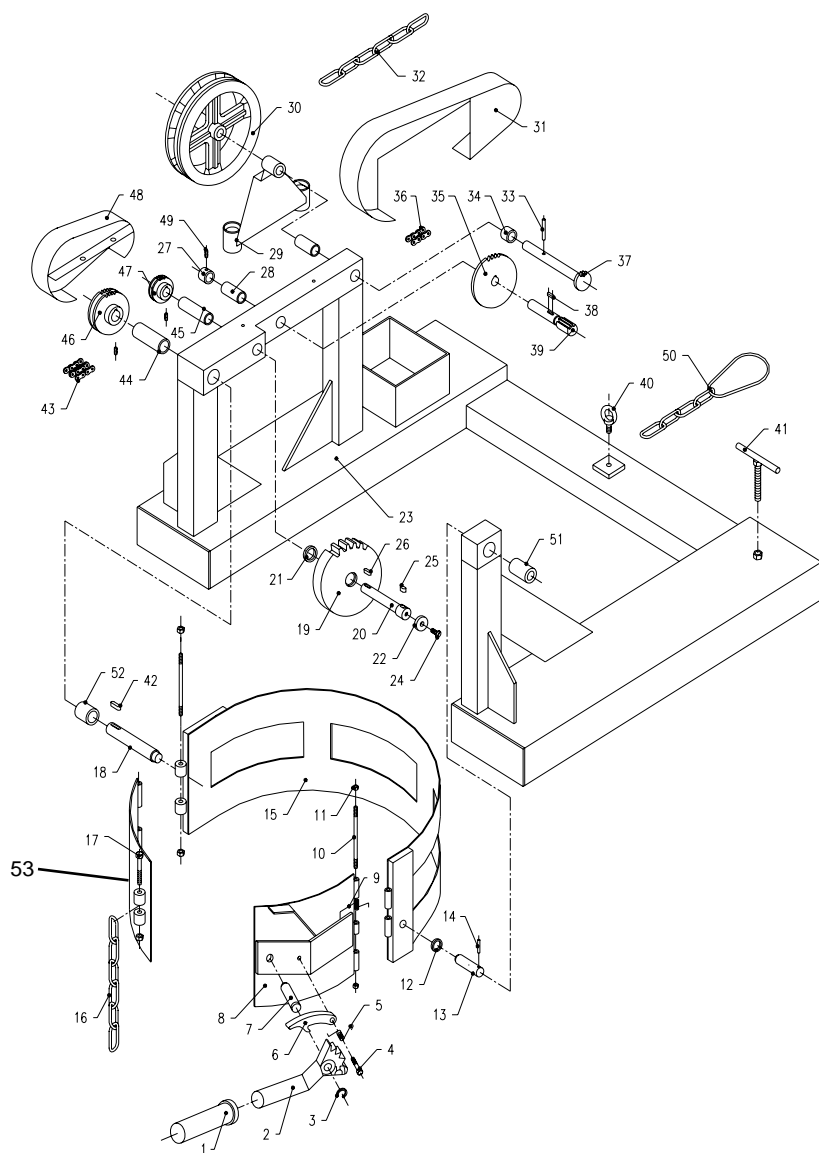
4. OPERATING INSTRUCTIONS

- 1) Adjust the forks so that the inside width between the forks is 24 1/2" minimum. One fork must be locked to bed plate.
- 2) Drive the truck forward to slip forks into fork sleeves. Attach safety chain to mast to secure drum carrier/rotator to forks.
- 3) Open carrier cradle full width and hook cradle chain on stud.
- 4) Drive truck with forks near- floor level to position carrier cradle around drum. Lock drum in place by clinching chain with ratchet tightener.
- 5) Remove control chain from box and place end of loop near

operator's seat.

- 6) Raise forks and transport drum in VERTICAL position.
- 7) TO POUR DRUM: Pull on chain, rotating drum to angle required for emptying. For best control of drum pouring angle, pay out one side of the loop while pulling in the other.
- 8) After emptying, rotate drum back to vertical position and drive the truck to deliver drum.

5.2 DCR-205-15-I



6.2 DCR-205-15-I Parts List

No.	Description	Qty	No.	Description	Qty
1	Rubber bushing	1	27	Aligning ring	1
2	Dentiform spanner	1	28	Bushing	2
3	Retaining ring	1	29	Chain rack	1
4	Hex bolt	1	30	Chain wheel	1
5	Spring	1	31	Chain cover	1
6	Dentiform hook	1	32	Galvanize chain	1
7	Pin	1	33	Spring pin	1
8	Clamping ring	1	34	Pin	1
9	Spring	1	35	Big chain	1
10	Double-ended bolt	1	36	Roller chain	1
11	Nut	2	37	Chain cover	1
12	Ring	1	38	Key	1
13	Pin	1	39	Gear axes	1
14	Spring pin	1	40	Screw	1
15	Hoop	1	41	Aligning bolt	2
16	Galvanize chain	1	42	Key	1
17	Hex bolt	1	43	Double roller chain	1
18	Pin	1	44	Bushing	1
19	Big gear	1	45	Bushing	1
20	Drive axes	4	46	Double big chain	1
21	Ring	1	47	Double small chain	1
22	Board	1	48	Chain cover	1
23	Pedestal ass.	1	49	Screw	3
24	Screw	1	50	Galvanize chain	1
25	Key	1	51	Bushing	1
26	Key	1	52	Ring	1
			53	Door	1

LIMITED WARRANTY

Vestil Manufacturing Corporation ("Vestil") warrants this product to be free of defects in material and workmanship during the warranty period. *Our warranty obligation is to provide a replacement for a defective original part if the part is covered by the warranty, after we receive a proper request from the warrantee (you) for warranty service.*

Who may request service?

Only a warrantee may request service. *You are a warrantee if* you purchased the product from Vestil or from an authorized distributor AND Vestil has been fully paid.

What is an "original part"?

An original part is a part used to make the product as shipped to the warrantee.

What is a "proper request"?

A request for warranty service is proper if Vestil receives: 1) a photocopy of the Customer Invoice that displays the shipping date; AND 2) a written request for warranty service including your name and phone number. Send requests by any of the following methods:

Mail
Vestil Manufacturing Corporation
2999 North Wayne Street, PO Box 507
Angola, IN 46703

Fax
(260) 665-1339
Phone
(260) 665-7586

Email
sales@vestil.com

In the written request, list the parts believed to be defective and include the address where replacements should be delivered.

What is covered under the warranty?

After Vestil receives your request for warranty service, an authorized representative will contact you to determine whether your claim is covered by the warranty. Before providing warranty service, Vestil may require you to send the entire product, or just the defective part or parts, to its facility in Angola, IN. The warranty covers defects in the following *original* dynamic components: motors, hydraulic pumps, electronic controllers, switches and cylinders. It also covers defects in *original* parts that wear under normal usage conditions ("wearing parts"): bearings, hoses, wheels, seals, brushes, batteries, and the battery charger.

How long is the warranty period?

The warranty period for original components is 90 days. The warranty period begins on the date when Vestil ships the product to the warrantee. If the product was purchased from an authorized distributor, the period begins when the distributor ships the product. Vestil may extend the warranty period for products shipped from authorized distributors by *up to* 30 days to account for shipping time.

If a defective part is covered by the warranty, what will Vestil do to correct the problem?

Vestil will provide an appropriate replacement for any *covered* part. An authorized representative of Vestil will contact you to discuss your claim.

What is not covered by the warranty?

1. Labor;
2. Freight;
3. Occurrence of any of the following, which automatically voids the warranty:
 - Product misuse;
 - Negligent operation or repair;
 - Corrosion or use in corrosive environments;
 - Inadequate or improper maintenance;
 - Damage sustained during shipping;
 - Collisions or other incidental contacts causing damage to the product;
 - Unauthorized modifications: DO NOT modify the product IN ANY WAY without first receiving written authorization from Vestil. Modification(s) might make the product unsafe to use or might cause excessive and/or abnormal wear.

Do any other warranties apply to the product?

Vestil Manufacturing Corp. makes no other express warranties. All implied warranties are disclaimed to the extent allowed by law. Any implied warranty not disclaimed is limited in scope to the terms of this Limited Warranty.

