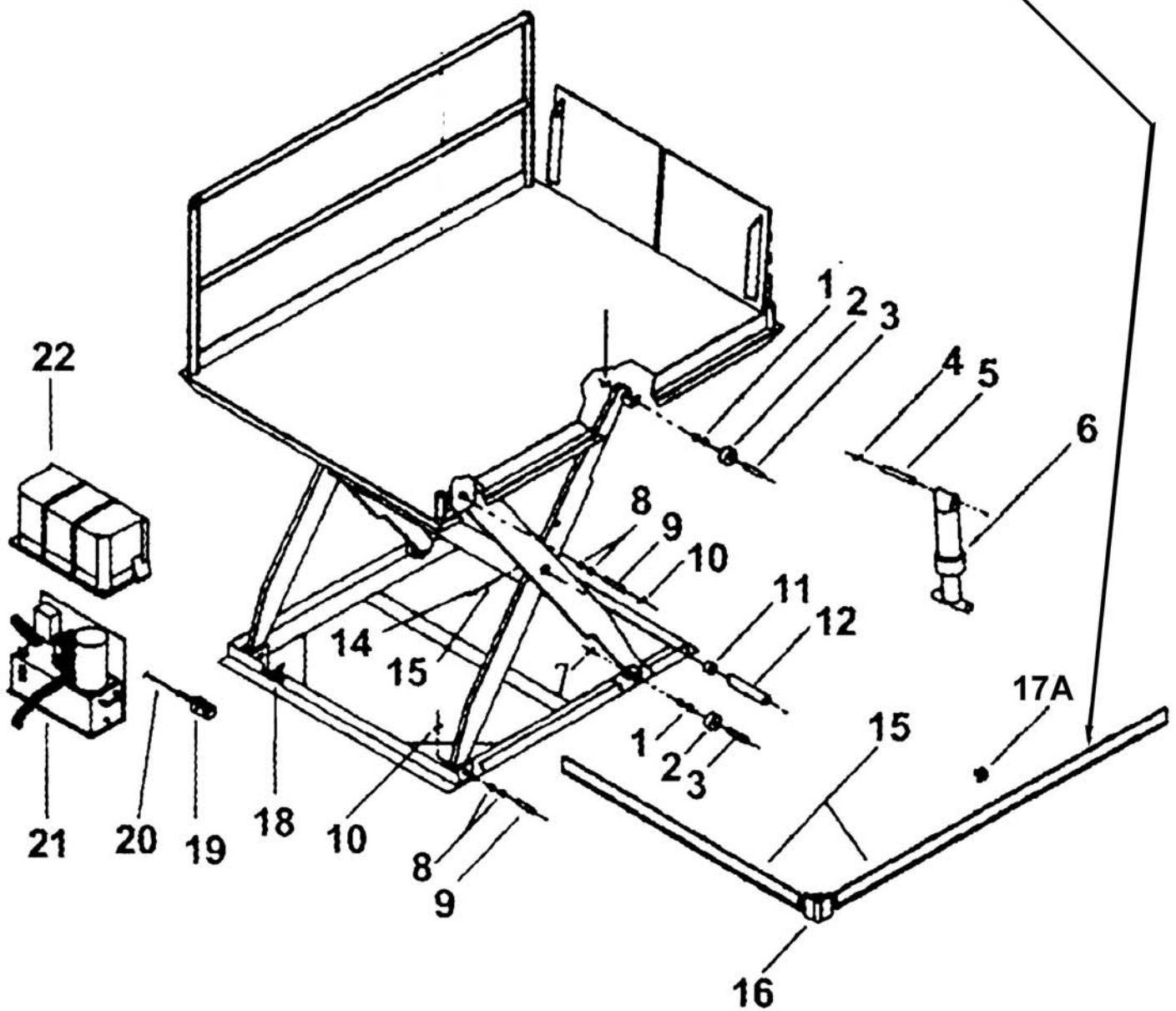
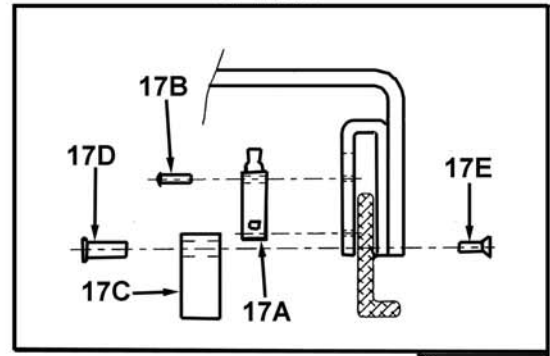


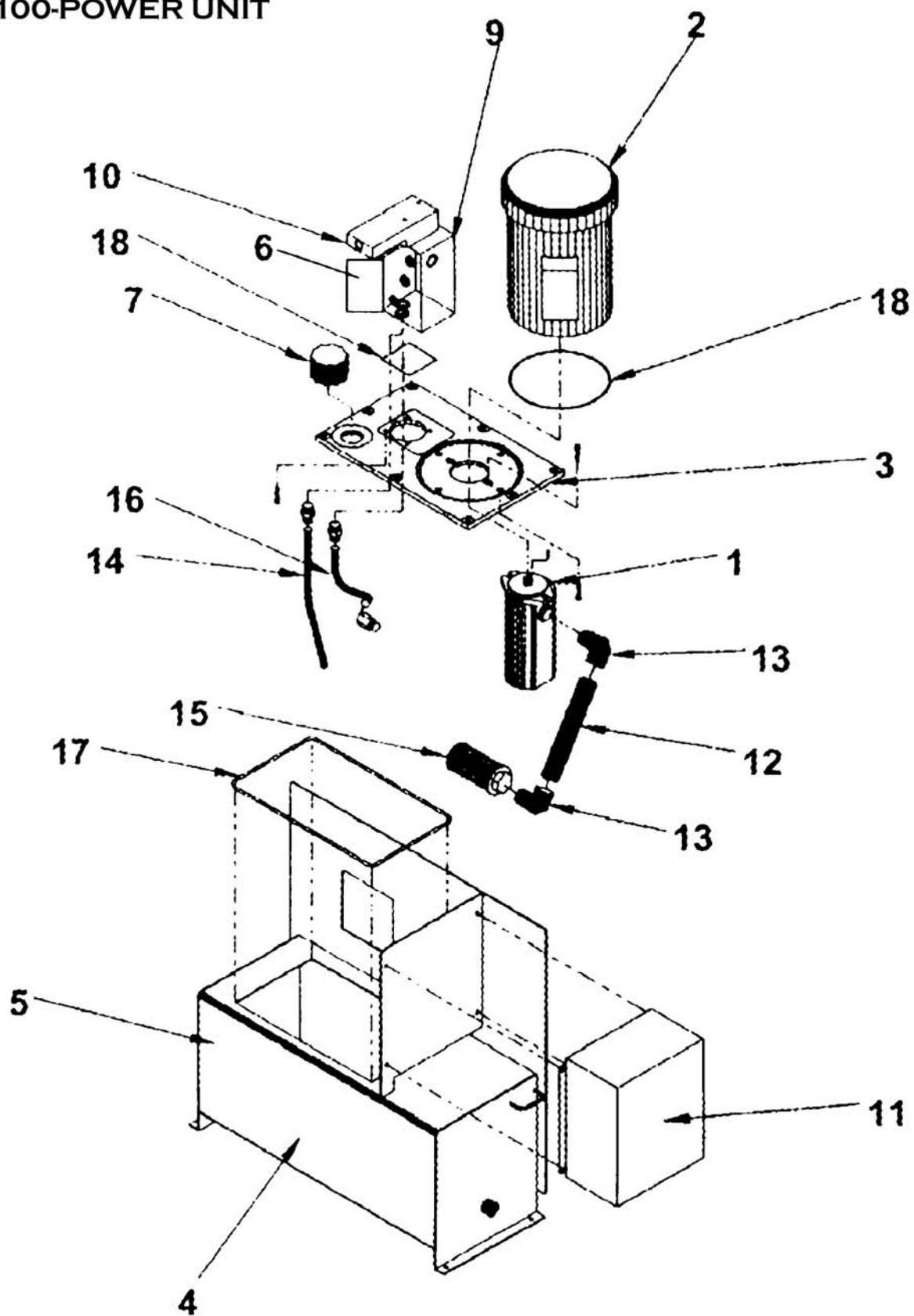
WL-100

TOE GUARD LIMIT SWITCH  
DETAIL



Ref. #	Model #	Generic Part #	Eng. Part #	Description
	WL-100	WL-B6501		Main Pivot Pin For Box Tubing Leg Set ( OLD STYLE )
	WL-100	WL-BUSH		Bushing For Above ( NO LONGER AVAILABLE)
1	WL-100	WL100-RLRBG	01-111-023	Roller Bushing 1-1/8x5/8
2	WL-100	WL100-RLR	05-027-001	Roller
3	WL-100	WL100-RLRPN	05-112-003	Roller Pin 1-1/8x4-1/4
4	WL-100	WL100-SPIN	64135	Spring Pin 3/16x1-1/4
5	WL-100	WL100-CYLPN1012	03-112-001	Cylinder Pin 1-1/8x9-1/4
5	WL-100	WL100-CYLPN58	03-112-001	Cylinder Pin 1-1/8x9-1/4
6	WL-100	WL100-HDCYL1012	05-021-001	Hydraulic Cylinder 3-1/4x19 (10k-12k)
6	WL-100	WL100-HDCYL58	05-021-004	Hydraulic Cylinder 3-1/4x19(5k-8k)
7	WL-100	WL100-SPIN	64135	Spring Pin 3/16x1-1/4
8	WL-100	WL100-HB	01-111-001	Hinge Bushing 1-1/8x5/8
9	WL-100	WL100-HP	05-112-002	Hinge Pin 1-1/8x3-3/16
10	WL-100	WL100-SPIN	64135	Spring Pin 3/16x1-1/4
11	WL-100	WL100-AXLPNB	01-111-017	Axle Pin Bushing 2"idx2-1/2
12	WL-100	WL100-AXLPN	05-112-001	Axle Pin 2x6-5/8
13	WL-100	WL100-BLT	11013	Bolt 1/4-20x 2-1/2
14	WL-100	WL100-NUT	37018	Nyloc Nut 1/4-20
14	WL-100	WL100-ALUMEXT	01-015-901	Aluminum Extrusion - Plus length in feet
16	WL-100	WL100-RBTG	01-015-009	Rubber Toe Guard Corner
17	WL-100	WL100-TGLSW	01-022-014	Toe Guard Limit Switch ( S.S. Housing )
17A	WL-100	WL100-TGLSW-2	01-022-022	Switch, Electrical Limit N.C. ( Small Plastic Switch)
17B	WL-100	WL-LS-SCR	24008	Screw # 4-40 x 1/2
17C	WL-100	WL-LS-ACT	01-015-008	Toe Guard Actuator
17D	WL-100	WL-LS-SPHDW	01-145-010	Toe Guard Specialty Hardware ( Actuator Sleeve Nut )
17E	WL-100	WL-LS-SCR-2	24189	Screw # 8-32 x 1/2
18	WL-100	WL100-UPTVLS	01-522-001	Up Travel Limit Switch
19	WL-100	WL100-2BHC	01-522-021	Hand Control with 20' Coil Cord
20	WL-100	WL100-CC	01-033-013	Coil Cord Only
22	WL-100	WL100-WCVR	22-024-002	Power Unit Weather Cover ( for steel tank )
22	WL-100		22-024-003	Power Unit Weather Cover ( for plastic tank )
	WL-100	WL100-6X8HR-R		Hand Rail For 6x8 Top ( priced per pair )
	WL-100	WL100-6X10-HR-R		Removable Hand Rail ( priced per pair )
	WL-100	WL100-7-10-HR-R		Removable Hand Rail ( priced per pair )
	WL-100	WL100-CHN		Chain - 6 ft.
	WL-100	WL100-HNG-HD	S180128	Heavy Duty Hinge For Bridge Plates
	WL-100	WL100-HNG-STD	S180000	Standard Hinge For Bridge Plates
	WL-100	WL100-SPSTB		Split Steel Bridge
	WL-100	WL100-HK-STD		Hose Kit With 20' Main Hose
	WL-100	WL-STA-JACK		Roll Over Jack ( 4 needed per unit )

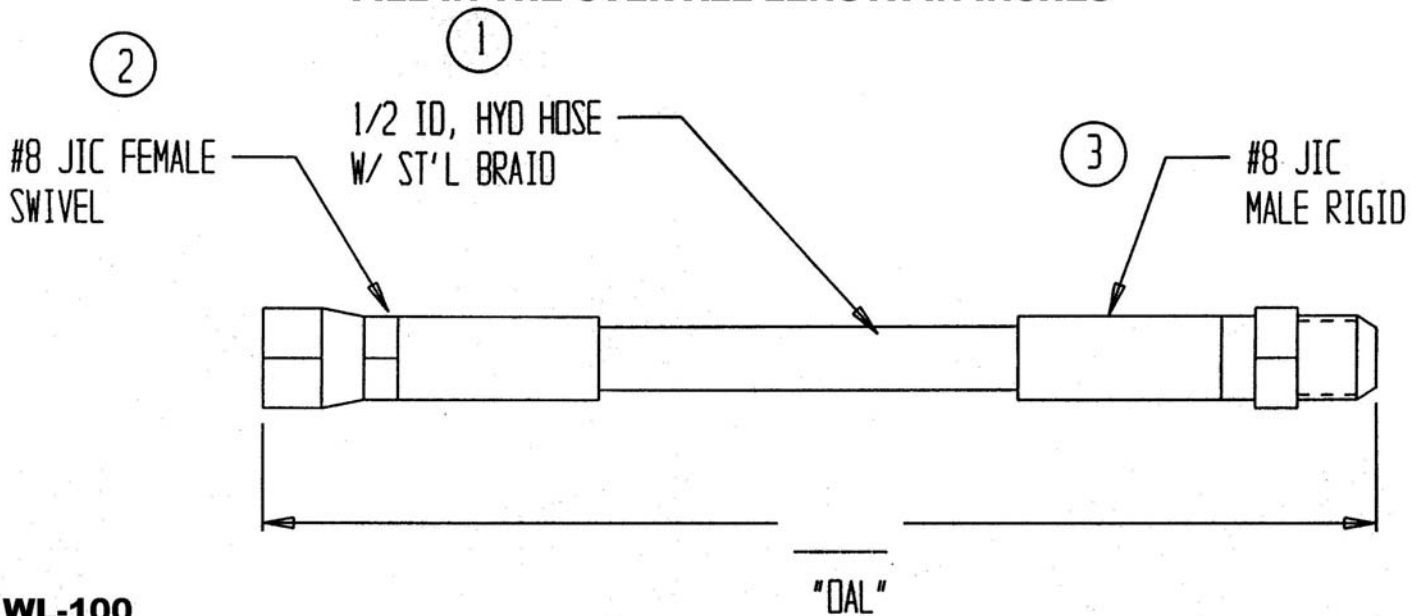
# WL-100-POWER UNIT



Ref. #	Model #	Generic Part #	Eng. Part #	Description
1	WL-100-PU	WL100-TSHP	33-921-211	Two Section Hydraulic Pump
2	WL-100-PU	WL100-ME	22-135-004	Electric Motor 1725 rpm. 9T fem shaft
3	WL-100-PU	WL100-PMA	22-031-001-C	Pump Motor Adapter
4	WL-100-PU	WL100-HR	22-154-009-B	Hydraulic Reservoir
5	WL-100-PU	WL100-SG	LG-3T	Sight Gauge
6	WL-100-PU	WL100-SF	SPE-15-10	Spin On Filter
7	WL-100-PU	WL100-FAB	ABB-Z-40-3S	Filter Air Breather w/3" SS Basket
8	WL-100-PU	WL100-MNFD	05-127-006	Manifold WL-100
10	WL-100-PU	WL100-MFB	22-127-002	Manifold Filter Body
11	WL-100-PU	WL100-BOX	VJ1210HW	Electrical Enclosure ( box only )
12	WL-100-PU	1"x7"NIP/BLK	1"x7"NIP/BLK	Black Pipe Nipple 1"X7"
13	WL-100-PU	1"ST/EL	1"ST/EL	Street El 1"
14	WL-100-PU	WL100-TAR	22-623-001	Return Tube Assembly
15	WL-100-PU	WL100-SS	PEC-10-1-100	Suction Strainer
16	WL-100-PU	WL100-TAHV	22-623-003	High Volume Tube Assembly
17	WL-100-PU	WL100-GMPST	XT113-HT	Gasket Material
18	WL-100-PU	WL100-ORK	WL100-ORK	O-Ring Kit (motor & manifold - plate)
	WL-100	WL100-3PHZ-CPU		Complete 3 phz. Power Unit
	WL-100	WL100-1PHZ-CPU		Complete 1 phz. Power Unit

WL-100-HOSE

**PART # WL-\_\_\_\_"-HH**  
**FILL IN THE OVER-ALL LENGTH IN INCHES**



**WL-100**  
**HOSE SPECIFICATION SHEET**

**HOSE IS \$ 14.50 PER. FOOT WITH FITINGS**