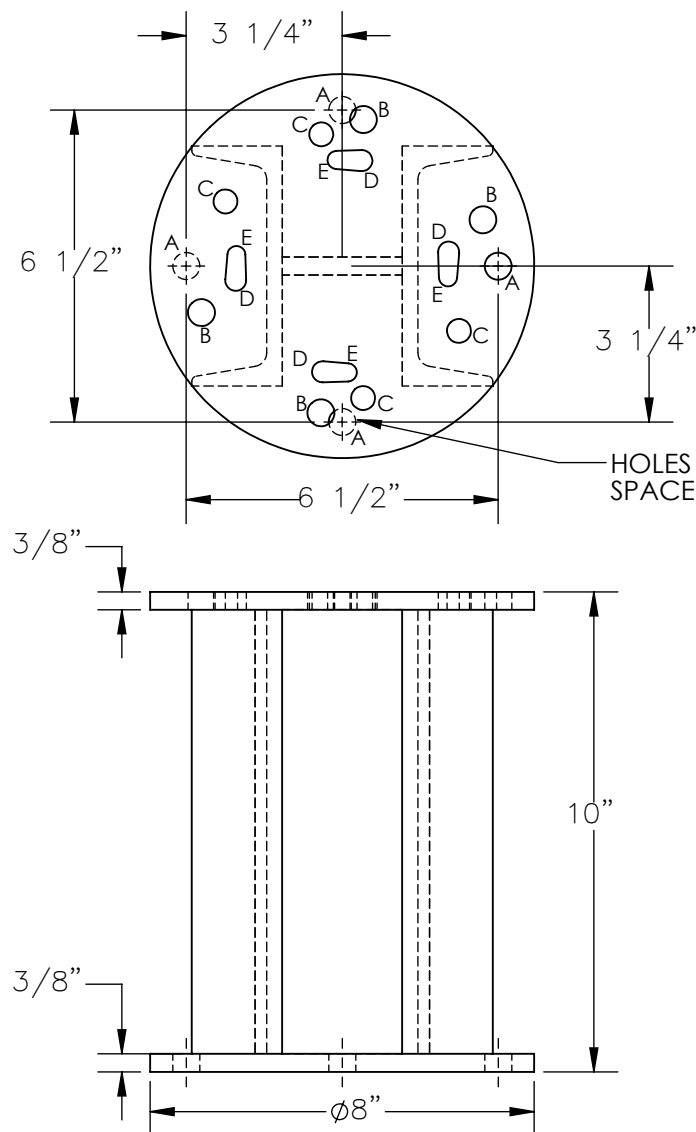


STATIONARY LEGS - AHS-STLO-RF

APPROX WEIGHT: 26.56 lbs.
DOES NOT INCLUDE WEIGHT OF POWER OR PACKAGING!!!

*** ANY ADDITIONS, DELETIONS, OR OMISSIONS MUST BE CORRECTED ON THIS DRAWING AS THIS DRAWING WILL BE CONSIDERED ALL INCLUSIVE ***

ALL GRAPHICS PROVIDED ARE FOR REFERENCE ONLY. IF CERTAIN DIMENSIONS ARE CRITICAL PLEASE VERIFY THOSE DIMENSIONS WITH YOUR SALESPERSON



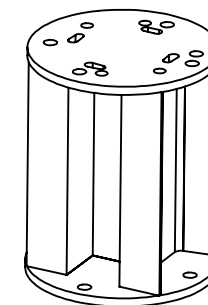
HOLE CHART *

A = HOLES IN BASE ARE (4) $\phi 9/16$ - (BASE HARDWARE NOT INCLUDED)
B = HOLES FOR **AHS-8/AHA-6** ARE (4) $\phi 9/16$ --- 28-154-049
C = HOLES FOR **AHS-6** ARE (4) $\phi 1/2$ ----- 28-154-050 MOUNTING HARWARE KIT NEEDED
D = HOLES FOR **AHA-2/-4** ARE (4) $\phi 7/16$ ----- 28-154-051 FOR GANTRY MODEL LISTED
E = HOLES FOR **AHS-2/-4** ARE (4) $\phi 3/8$ ----- 28-154-052

HOLES AND HARDWARE FOR AHSN GANTRY CRANES
ARE THE SAME AS THE AHS MODEL OF MATCHING SIZE

* = THE AHS-STLO-RF STATIONARY LEG HAS
HOLES FOR ALL MODELS OF GANTRY CRANES,
USE THE HOLES LISTED IN THE CHART FOR THE MODEL
OF CRANE BEING USED.

HOLES IN BASE ARE 9/16 AND
SPACED 6 1/2" APART AS SHOWN



3-D VIEW
FOR REFERENCE

(4) WELDMENTS AND (4) MOUNTING HARDWARE KITS
ARE REQUIRED FOR THE BOLT DOWN OPTION
FOR A GANTRY CRANE.

DIMENSION TOLERANCE $\pm 1/4"$

STANDARD FEATURES

MODEL NUMBER IS AHS-STLO-RF
BOLT TO BOTTOM OF AHS GANTRY
CRANES FOR USE WITHOUT CASTERS
OVERALL WIDTH IS 8"
OVERALL LENGTH IS 8"
OVERALL HEIGHT IS 10"
STATIONARY LEGS ARE WELDED
STEEL CONSTRUCTION

SPECIAL FEATURES

NONE

APPROVAL

I, THE UNDERSIGNED, AGREE THAT THE PRODUCT AS
REPRESENTED SATISFIES DESIGN AND DIMENSION
REQUIREMENTS. I ALSO ACKNOWLEDGE MY DUTY TO
CONFIRM PRODUCT AND INSTALLATION
COMPLIANCE WITH ALL APPLICABLE FEDERAL, STATE
AND LOCAL REGULATIONS AND STANDARDS.

ANY MODIFIED UNITS ARE NON-RETURNABLE

[] As drawn [] As marked

Signed: _____ Date: _____

Printed Name: _____

LEAD TIME WILL START UPON RECEIPT OF SIGNED APPROVAL DRAWING

DISTRIBUTOR'S NAME:

VESTIL MANUFACTURING

P.O.#

X

W.O.#

X

SALES:

X

FILE NAME:

28-007-415-003

FOR INTERNAL USE ONLY
PROJECT SIGN OFF

SALES

ENG.

FAB.

POWER

DRAWN BY: MTS

DATE: 03/31/2017

REFERENCE: X

SCALE: 1:4

QUOTED LEAD TIME: X

QUOTE #
X