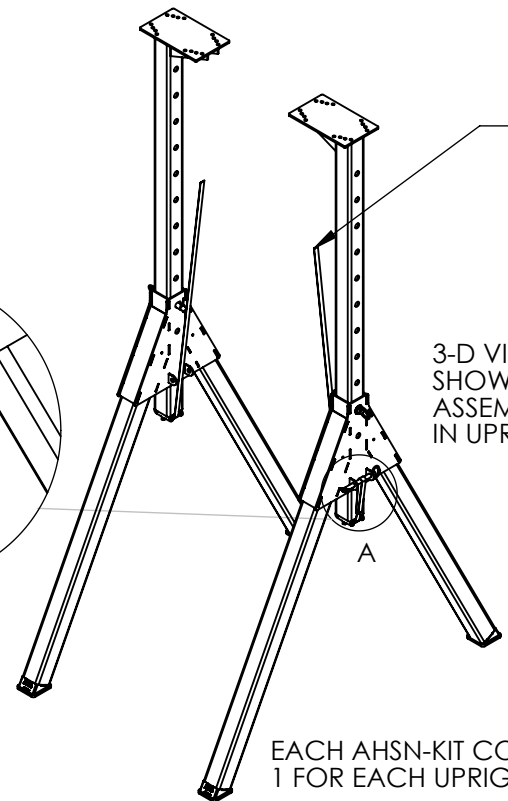
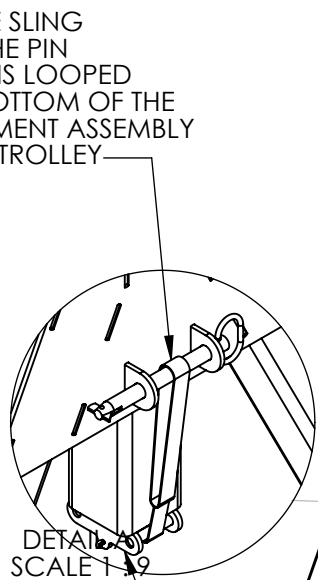
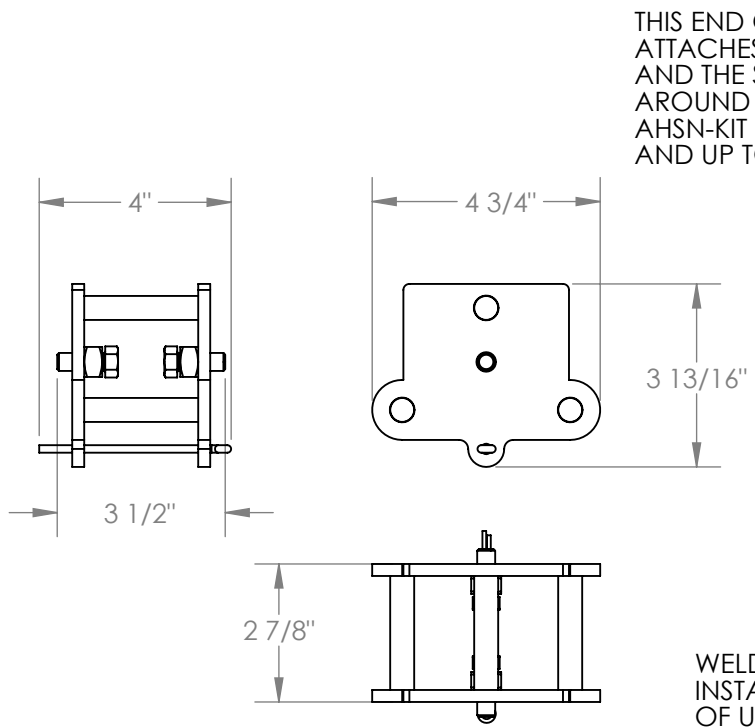


BEAM HEIGHT ADJUSTMENT KIT - AHSN-KIT

APPROX WEIGHT: 8 lbs.
DOES NOT INCLUDE WEIGHT OF POWER OR PACKAGING!!!

*** ANY ADDITIONS, DELETIONS, OR OMISSIONS MUST BE CORRECTED ON THIS DRAWING AS THIS DRAWING WILL BE CONSIDERED ALL INCLUSIVE ***

ALL GRAPHICS PROVIDED ARE FOR REFERENCE ONLY. IF CERTAIN DIMENSIONS ARE CRITICAL PLEASE VERIFY THOSE DIMENSIONS WITH YOUR SALESPERSON



THIS END OF THE SLING ATTACHES TO THE PIN AND THE SLING IS LOOPED AROUND THE BOTTOM OF THE AHSN-KIT WELDMENT ASSEMBLY AND UP TO THE TROLLEY

THIS END OF THE SLING IS ATTACHED TO THE TROLLEY TO RAISE THE UPRIGHT AND BEAM

3-D VIEW - 1=36 SCALE SHOWING BOTH WELDMENT ASSEMBLIES IN POSITION IN UPRIGHT TUBES

UPRIGHT WELDMENT AND LEG ASSEMBLY ARE SHOWN IN 3-D VIEW TO SHOW HOW AHSN-KIT IS INSTALLED (NOT INCLUDED IN AHSN-KIT)

DETAIL A SCALE 1=19

EACH AHSN-KIT CONTAINS (2) ASSEMBLIES 1 FOR EACH UPRIGHT WELDMENT IN AN AHSN CRANE

2-D VIEW SHOWING ONLY 1 OF THE 2 WELDMENT ASSEMBLIES

DIMENSION TOLERANCE ± 1/4"

STANDARD FEATURES

MODEL NUMBER IS AHSN-KIT
OVERALL WIDTH IS 4 3/4"
OVERALL LENGTH IS 4"
OVERALL HEIGHT IS 3 13/16"
FITS 3 1/2" I.D. SQUARE TUBE

BEAM AND UPRIGHT MUST BE MOVED UP ONE HEIGHT ADJUSTMENT HOLE SPAN (6") AT A TIME - THEN THE UPRIGHT MUST BE PINNED IN POSITION. THEN THE TROLLEY IS MOVED TO THE OTHER SIDE OF THE GANTRY CRANE TO RAISE THE OTHER UPRIGHT 6". THIS PROCEDURE IS REPEATED RAISING EACH SIDE 6" AT A TIME TO ADJUST TO THE DESIRED HEIGHT.

SPECIAL FEATURES

NONE

APPROVAL

I, THE UNDERSIGNED, AGREE THAT THE PRODUCT AS REPRESENTED SATISFIES DESIGN AND DIMENSION REQUIREMENTS. I ALSO ACKNOWLEDGE MY DUTY TO CONFIRM PRODUCT AND INSTALLATION COMPLIANCE WITH ALL APPLICABLE FEDERAL, STATE AND LOCAL REGULATIONS AND STANDARDS.

ANY MODIFIED UNITS ARE NON-RETURNABLE

As drawn As marked

Signed: _____ Date: _____

Printed Name: _____

LEAD TIME WILL START UPON RECEIPT OF SIGNED APPROVAL DRAWING

FOR INTERNAL USE ONLY PROJECT SIGN OFF	
SALES	
ENG.	
FAB.	
POWER	

DISTRIBUTOR'S NAME:		P.O.#
VESTIL MANUFACTURING		X
DRAWN BY:	DATE:	W.O.#
MTS	06/15/2016	X
REFERENCE:	SCALE:	SALES:
X	1:4	X
QUOTED LEAD TIME:	QUOTE #	FILE NAME:
X	X	28-007-396