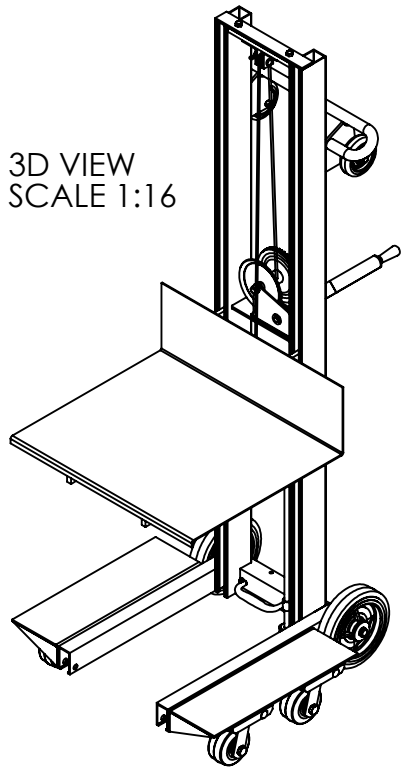
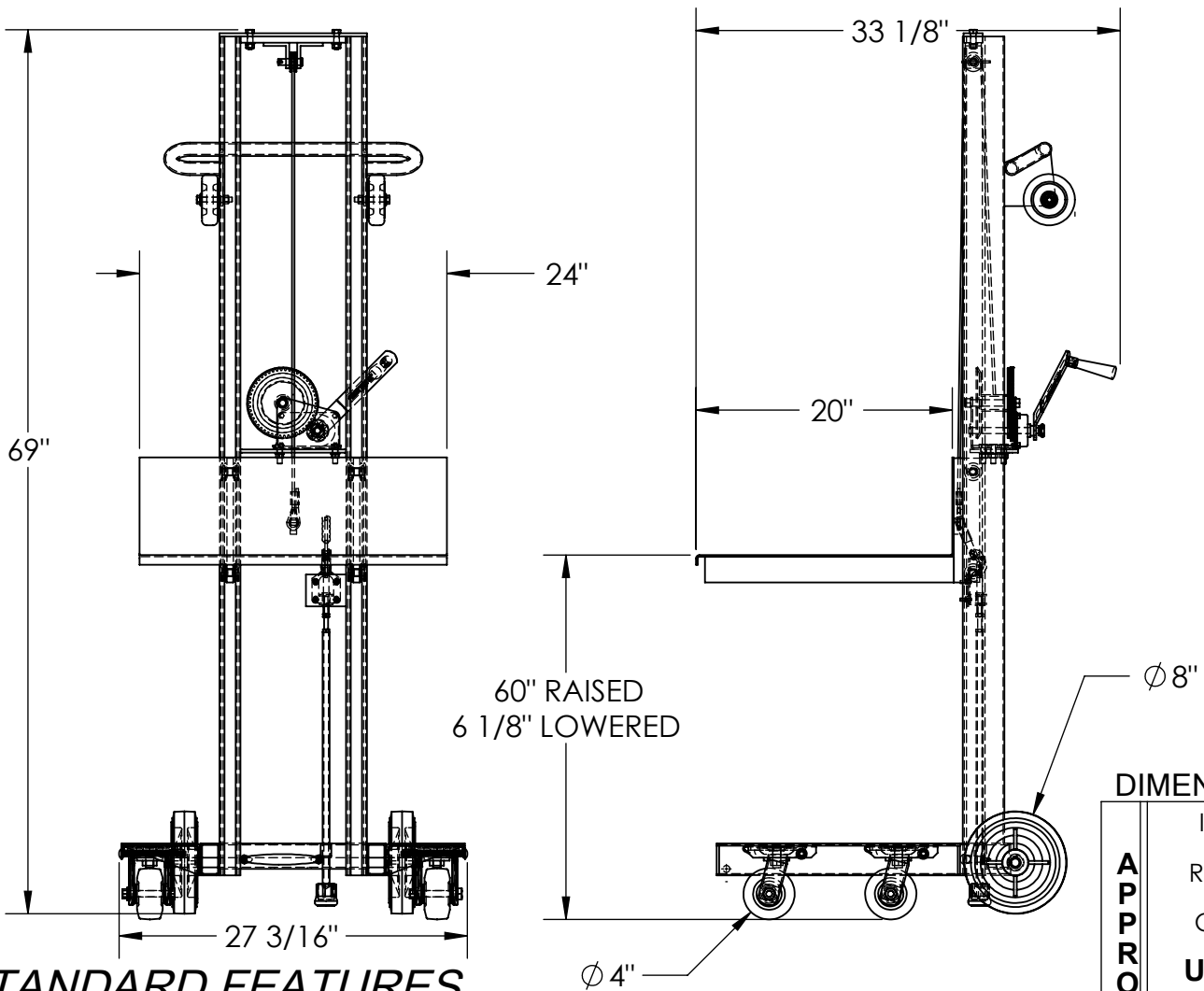


APPROX WEIGHT: 126.04 lbs.  
DOES NOT INCLUDE WEIGHT OF POWER OR PACKAGING!!!

# ALUMINUM LITE LOAD LIFT- ALLW-2420-4SFL

\*\*\* ANY ADDITIONS, DELETIONS, OR OMISSIONS MUST BE CORRECTED ON THIS DRAWING AS THIS DRAWING WILL BE CONSIDERED ALL INCLUSIVE \*\*\*  
ALL GRAPHICS PROVIDED ARE FOR REFERENCE ONLY. IF CERTAIN DIMENSIONS ARE CRITICAL PLEASE VERIFY THOSE DIMENSIONS WITH YOUR SALESPERSON



**STANDARD FEATURES**  
MODEL NUMBER: ALLW-2420-4SFL  
CAPACITY: 400 LBS.  
PLATFORM WIDTH: 24"  
PLATFORM LENGTH: 20"  
OVERALL WIDTH: 27 3/16"  
OVERALL LENGTH: 33 1/8"  
OVERALL HEIGHT: 69"  
RAISED HEIGHT: 60"  
LOWERED HEIGHT: 6 1/8"  
HAND WINCH OPERATION  
INCLUDES FLOOR LOCK  
ALUMINUM CONSTRUCTION

**SPECIAL FEATURES**  
NONE

DIMENSION TOLERANCE ± 1/4"

|  |  |  |
|--|--|--|
| APPROVAL   | I, THE UNDERSIGNED, AGREE THAT THE PRODUCT AS REPRESENTED SATISFIES DESIGN AND DIMENSION REQUIREMENTS. I ALSO ACKNOWLEDGE MY DUTY TO CONFIRM PRODUCT AND INSTALLATION COMPLIANCE WITH ALL APPLICABLE FEDERAL, STATE AND LOCAL REGULATIONS AND STANDARDS. |  |
|  | <b>UNITS REQUIRING APPROVAL DRAWINGS OR MODIFIED ARE NON-RETURNABLE</b>  |  |
|  | [ ] As drawn [ ] As marked   |  |
|  | Signed: _____ Date: _____  |  |
| Printed Name: _____  |  |  |
| LEAD TIME WILL START UPON RECEIPT OF SIGNED APPROVAL DRAWING |  |  |

|                      |             |            |
|----------------------|-------------|------------|
| DISTRIBUTOR'S NAME:  |             | P.O.#      |
| VESTIL MANUFACTURING |             | X          |
| DRAWN BY: KY         |             | W.O.#      |
| DATE: 8/30/05        |             | X          |
| REFERENCE: X         | SCALE: 1:14 | SALES: X   |
| QUOTED LEAD TIME: X  | QUOTE # X   | FILE NAME: |
|                      |             | 42-007-019 |