

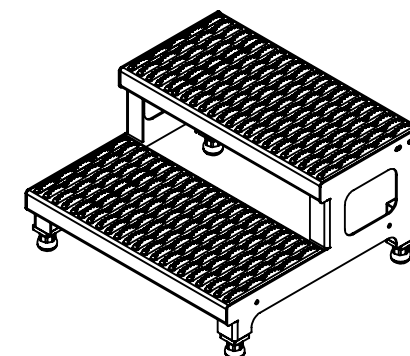
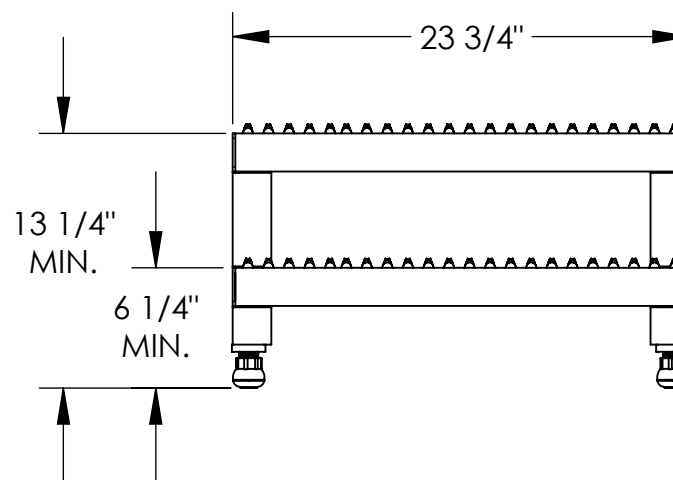
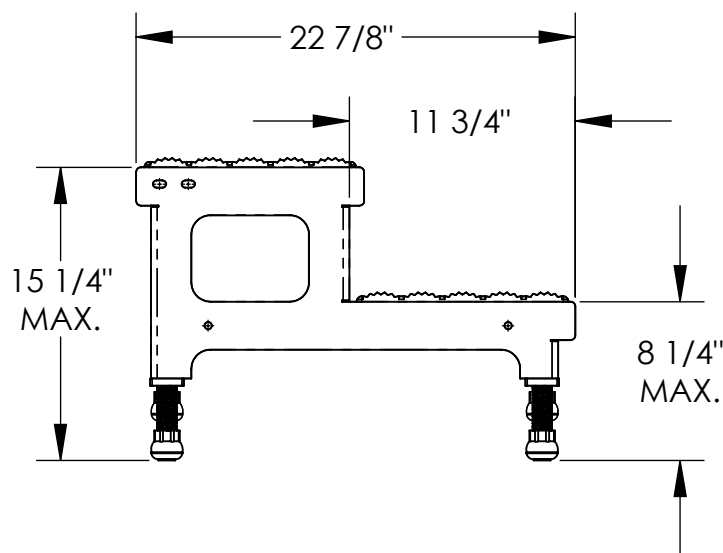
ADJUSTABLE STEP-MATE STANDS - ASP-24-SS

APPROX WEIGHT: 33.45 lbs.
DOES NOT INCLUDE WEIGHT OF POWER OR PACKAGING!!!

*** ANY ADDITIONS, DELETIONS, OR OMISSIONS MUST BE CORRECTED ON THIS DRAWING AS THIS DRAWING WILL BE CONSIDERED ALL INCLUSIVE ***

ALL GRAPHICS PROVIDED ARE FOR REFERENCE ONLY. IF CERTAIN DIMENSIONS ARE CRITICAL PLEASE VERIFY THOSE DIMENSIONS WITH YOUR SALESPERSON

ALL GRAPHICS PROVIDED ARE FOR REFERENCE ONLY. IF CERTAIN DIMENSIONS ARE CRITICAL PLEASE VERIFY THOSE DIMENSIONS WITH YOUR SALESPERSON



3-D VIEW
1:16 SCALE

STANDARD FEATURES

DIMENSION TOLERANCE $\pm 1/4$ "

MODEL NUMBER IS ASP-24-SS

CAPACITY: 500 LBS

OVERALL WIDTH: 23 3/4"

OVERALL LENGTH: 22 7/8"

BOTTOM STEP HEIGHT: MIN. 6 1/4", MAX. 8 1/4"

TOP STEP HEIGHT: MIN. 13 1/4", MAX. 15 1/4"

STEPS:

-SERRATED STAINLESS STEEL 11 3/4" DEEP

LEGS:

-ADJUSTABLE

-ANTI-SLIP TIPS

STAINLESS STEEL CONSTRUCTION WITH
UNPOLISHED (MILL) FINISH

**A
P
P
R
O
V
A
L**

I, THE UNDERSIGNED, AGREE THAT THE PRODUCT AS REPRESENTED SATISFIES DESIGN AND DIMENSION REQUIREMENTS. I ALSO ACKNOWLEDGE MY DUTY TO CONFIRM PRODUCT AND INSTALLATION COMPLIANCE WITH ALL APPLICABLE FEDERAL, STATE AND LOCAL REGULATIONS AND STANDARDS.

ANY MODIFIED UNITS ARE NON-RETURNABLE

☐ As drawn ☐ As marked

Signed: _____ Date: _____

Printed Name: _____

LEAD TIME WILL START UPON RECEIPT OF SIGNED APPROVAL DRAWING

FOR INTERNAL USE ONLY
PROJECT SIGN OFF

SALES	
ENG.	
FAB.	
POWER	

DISTRIBUTOR'S NAME:

VESTIL MANUFACTURING

DRAWN BY: SJA

DATE: 12/12/14

REFERENCE: X

SCALE: 1:10

QUOTED LEAD TIME: X

QUOTE #
X

P.O.# X

W.O.# X

SALES: X

FILE NAME:

14-007-292

SPECIAL FEATURES

NONE