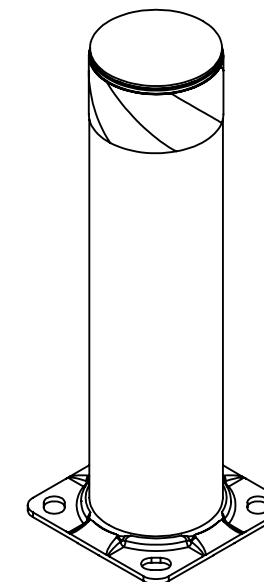
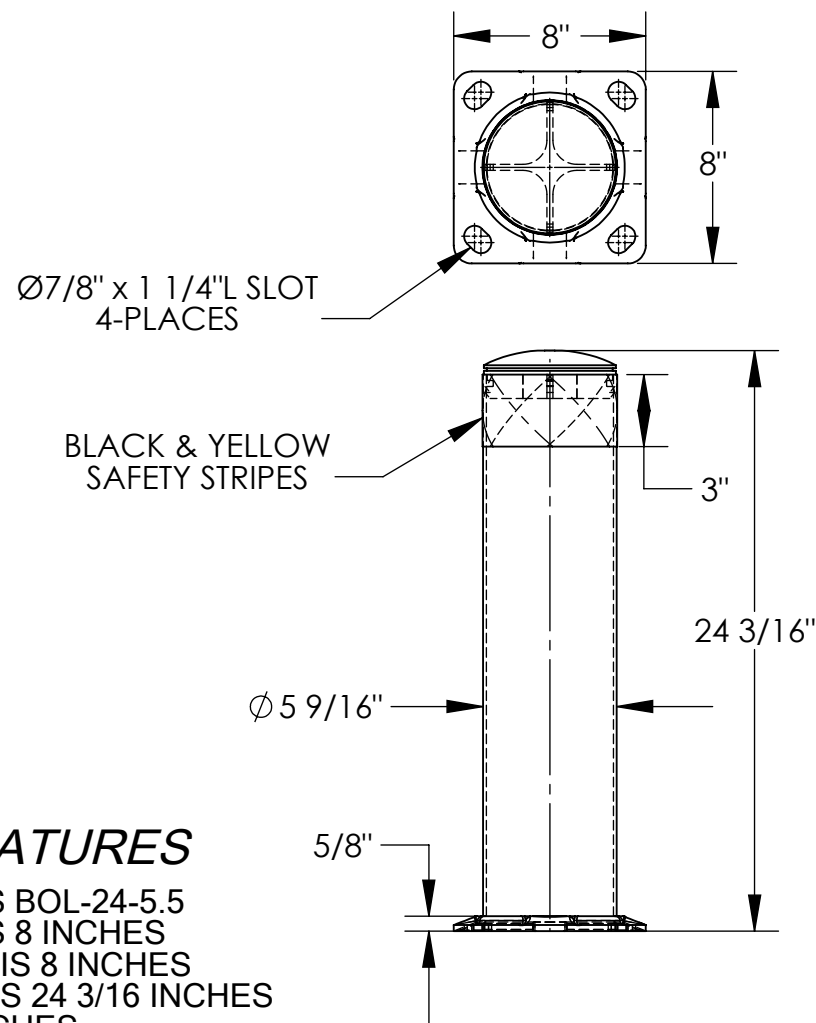


STEEL PIPE SAFETY BOLLARD - BOL-24-5.5

APPROX WEIGHT: 20.38 lbs.
DOES NOT INCLUDE WEIGHT OF POWER OR PACKAGING!!!

*** ANY ADDITIONS, DELETIONS, OR OMISSIONS MUST BE CORRECTED ON THIS DRAWING AS THIS DRAWING WILL BE CONSIDERED ALL INCLUSIVE ***

ALL GRAPHICS PROVIDED ARE FOR REFERENCE ONLY. IF CERTAIN DIMENSIONS ARE CRITICAL PLEASE VERIFY THOSE DIMENSIONS WITH YOUR SALESPERSON



STANDARD FEATURES

MODEL NUMBER IS BOL-24-5.5
OVERALL WIDTH IS 8 INCHES
OVERALL LENGTH IS 8 INCHES
OVERALL HEIGHT IS 24 3/16 INCHES
PIPE DIA: 5 9/16 INCHES
LAG DOWN MOUNTING PLATE: 5/8 x 8 x 8 INCHES
WITH MOUNTING SLOTS: 7/8" x 1 1/4"
FOR 3/4" DIA ANCHOR BOLTS (SOLD SEPARATELY)
BLACK & YELLOW SAFETY STRIPES
BLACK REMOVABLE TOP CAP
TOUGH BAKED IN POWDER COATED YELLOW FINISH
ALL STEEL CONSTRUCTION
(ASTM A-36 MIN.) WITH
WELDING TO MEET AWS
WARNING: CHECK APPLICABLE STATE
& LOCAL LAWS FOR YOUR AREA

SPECIAL FEATURES

NONE

DIMENSION TOLERANCE $\pm 1/4"$

APPROVAL

I, THE UNDERSIGNED, AGREE THAT THE PRODUCT AS REPRESENTED SATISFIES DESIGN AND DIMENSION REQUIREMENTS. I ALSO ACKNOWLEDGE MY DUTY TO CONFIRM PRODUCT AND INSTALLATION COMPLIANCE WITH ALL APPLICABLE FEDERAL, STATE AND LOCAL REGULATIONS AND STANDARDS.

ANY MODIFIED UNITS ARE NON-RETURNABLE

[] As drawn [] As marked

Signed: _____ Date: _____

Printed Name: _____

LEAD TIME WILL START UPON RECEIPT OF SIGNED APPROVAL DRAWING

FOR INTERNAL USE ONLY
PROJECT SIGN OFF

SALES	
ENG.	
FAB.	
POWER	

DISTRIBUTOR'S NAME:

VESTIL MANUFACTURING

P.O.# X

W.O.# X

DRAWN BY: J.BRANDT

DATE: 07/17/08

SALES: X

REFERENCE: X

SCALE: 1:8

FILE NAME:

QUOTED LEAD TIME: X

QUOTE # X

23-007-010