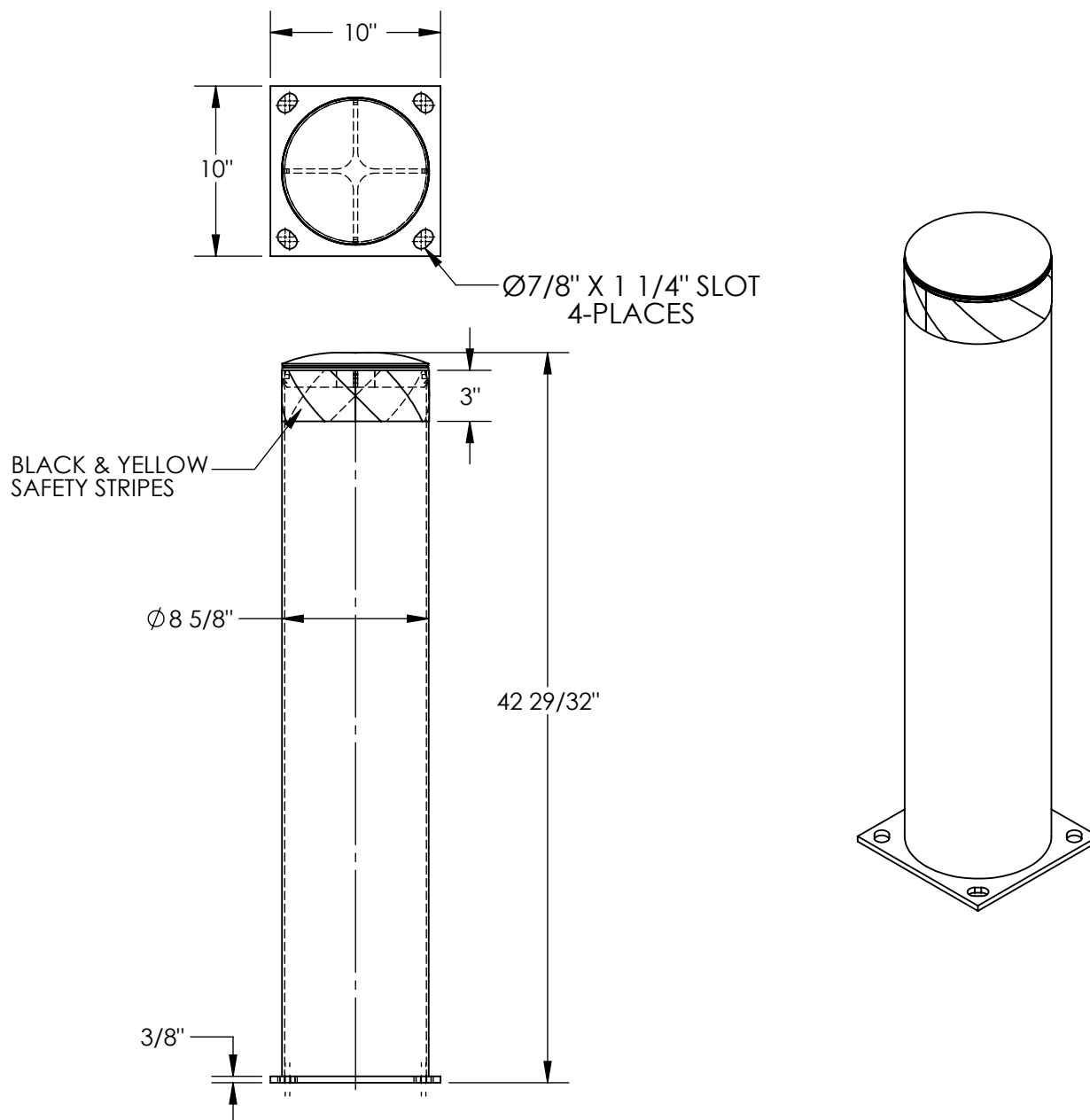


STEEL PIPE SAFETY BOLLARD - BOL-42-8.5

APPROX WEIGHT: 58.68 lbs.
DOES NOT INCLUDE WEIGHT OF POWER OR PACKAGING!!!

ANY ADDITIONS, DELETIONS, OR OMISSIONS MUST BE CORRECTED ON THIS DRAWING AS THIS DRAWING WILL BE CONSIDERED ALL INCLUSIVE



ALL GRAPHICS PROVIDED ARE FOR REFERENCE ONLY. IF CERTAIN DIMENSIONS ARE CRITICAL PLEASE VERIFY THOSE DIMENSIONS WITH YOUR SALESPERSON

DIMENSION TOLERANCE $\pm 1/4"$

STANDARD FEATURES

MODEL NUMBER IS BOL-42-8.5
OVERALL WIDTH IS 10"
OVERALL LENGTH IS 10"
OVERALL HEIGHT IS 42 29/32"
PIPE DIA: 8 5/8"
LAG DOWN MOUNTING PLATE: 3/8" x 10" x 10"
WITH MOUNTING SLOTS: 7/8" x 1 1/4" (4 PLACES)
FOR 3/4" DIA. ANCHOR BOLTS (SOLD SEPERATELY)
TOUGH BAKED IN POWDER COATED YELLOW FINISH
BLACK REMOVABLE PLASTIC CAP
BLACK & YELLOW SAFETY STRIPES
ALL STEEL CONSTRUCTION
(ASTM A-36 MIN.) WITH
WELDING TO MEET AWS
WARNING: CHECK APPLICABLE STATE
& LOCAL LAWS FOR YOUR AREA

SPECIAL FEATURES

NONE

APPROVAL

I, THE UNDERSIGNED, AGREE THAT THE PRODUCT AS REPRESENTED SATISFIES DESIGN AND DIMENSION REQUIREMENTS. I ALSO ACKNOWLEDGE MY DUTY TO CONFIRM PRODUCT AND INSTALLATION COMPLIANCE WITH ALL APPLICABLE FEDERAL, STATE AND LOCAL REGULATIONS AND STANDARDS.
UNITS REQUIRING APPROVAL DRAWINGS OR MODIFIED ARE NON-RETURNABLE
[] As drawn [] As marked

Signed: _____ Date: _____

Printed Name: _____

LEAD TIME WILL START UPON RECEIPT OF SIGNED APPROVAL DRAWING

DISTRIBUTOR'S NAME:

VESTIL MANUFACTURING

DRAWN BY: SR

DATE: 02/20/09

P.O.# X

W.O.# X

SALES: X

REFERENCE: X

SCALE: 1:10

FILE NAME:

QUOTED LEAD TIME: X

QUOTE # X

23-007-266