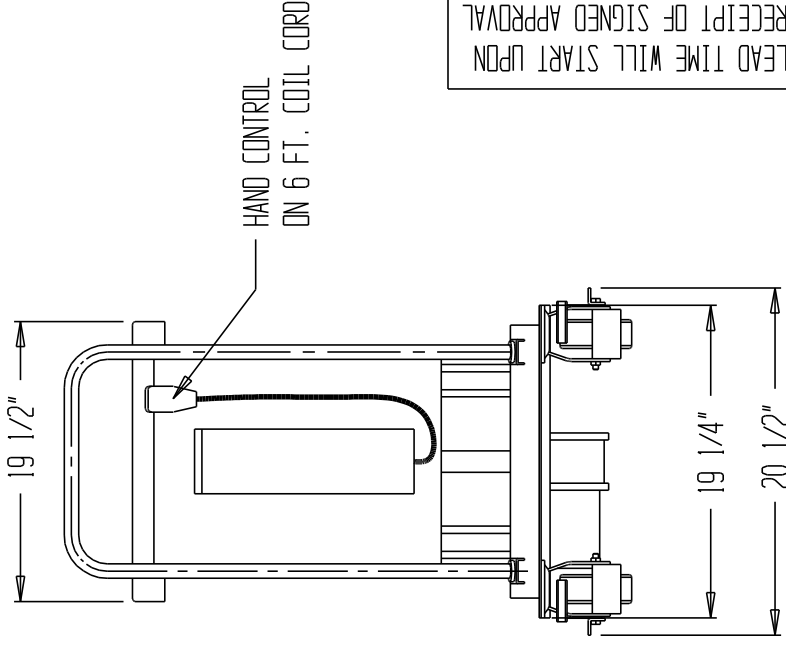
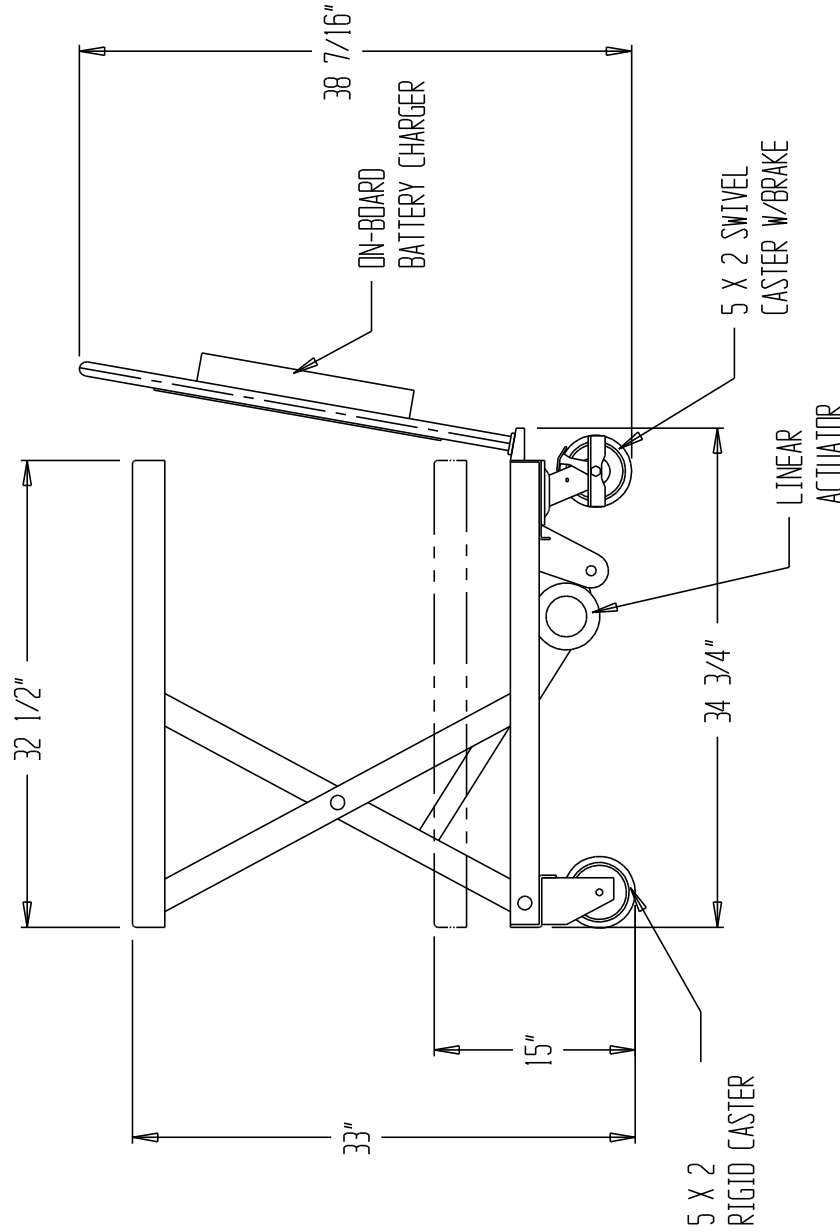


LINEAR ACTUATED ELEVATING CART, CART-500-LA

Any additions, deletions or omissions must be corrected on this drawing, as this drawing will be considered all inclusive.



LEAD TIME WILL START UPON RECEIPT OF SIGNED APPROVAL DRAWING

STANDARD FEATURES

- MODEL NUMBER: CART-500-LA
- CAPACITY: 500 LBS.
- PLATFORM WIDTH: 19 1/2"
- PLATFORM LENGTH: 32 1/2"
- PLATFORM RAISED HEIGHT: 33"
- PLATFORM LOWERED HEIGHT: 15"
- 12V DC BATTERY
- OPERATION: LINEAR ACTUATOR
- CASTERS: 5 x 2 POLY ON STEEL

SPECIAL FEATURES

NONE

- **SPECIAL UNITS ARE NON-RETURNABLE
- *AVAILABLE AT ADDITIONAL COSTS

*** ALL GRAPHICS PROVIDED ARE FOR REFERENCE ONLY. IF CERTAIN DIMENSIONS ARE CRITICAL PLEASE VERIFY THOSE DIMENSIONS WITH YOUR SALESPERSON. ***

A I, THE UNDERSIGNED, AGREE THAT THE PRODUCT AS REPRESENTED
P SATISFIES DESIGN & DIMENSION REQUIREMENTS. I ALSO ACKNOWLEDGE
P MY DUTY TO CONFIRM PRODUCT & INSTALLATION COMPLIANCE WITH ALL
R APPLICABLE FEDERAL, STATE AND LOCAL REGULATIONS & STANDARDS.
O **ALL SPECIAL UNITS ARE NON-RETURNABLE**
V () As drawn () As marked
A Signed: _____ Date: _____
L LEAD TIME WILL START UPON RECEIPT OF SIGNED APPROVAL DRAWING

DISTRIBUTOR'S NAME:

VESTIL MFG

DRAWN BY: CA

REFERENCE: -

QUOTED LEADTIME: -

P.O.#: -

W.O.#: -

SALES: -

DATE: 2-15-08 / 1-30-13

SCALE: 1:14

QUOTE #: -

DRWG./FILE NAME:

CART-500-LA