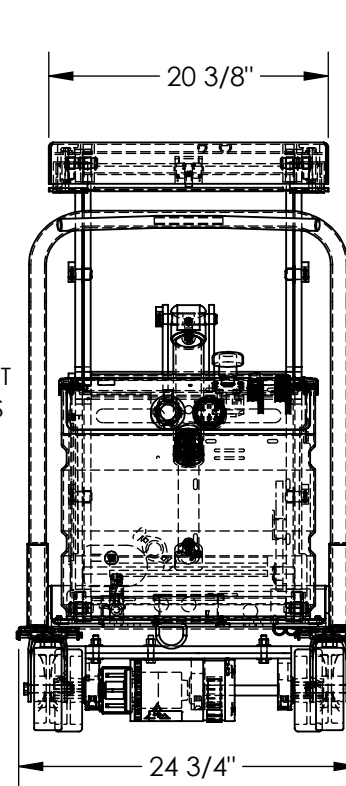
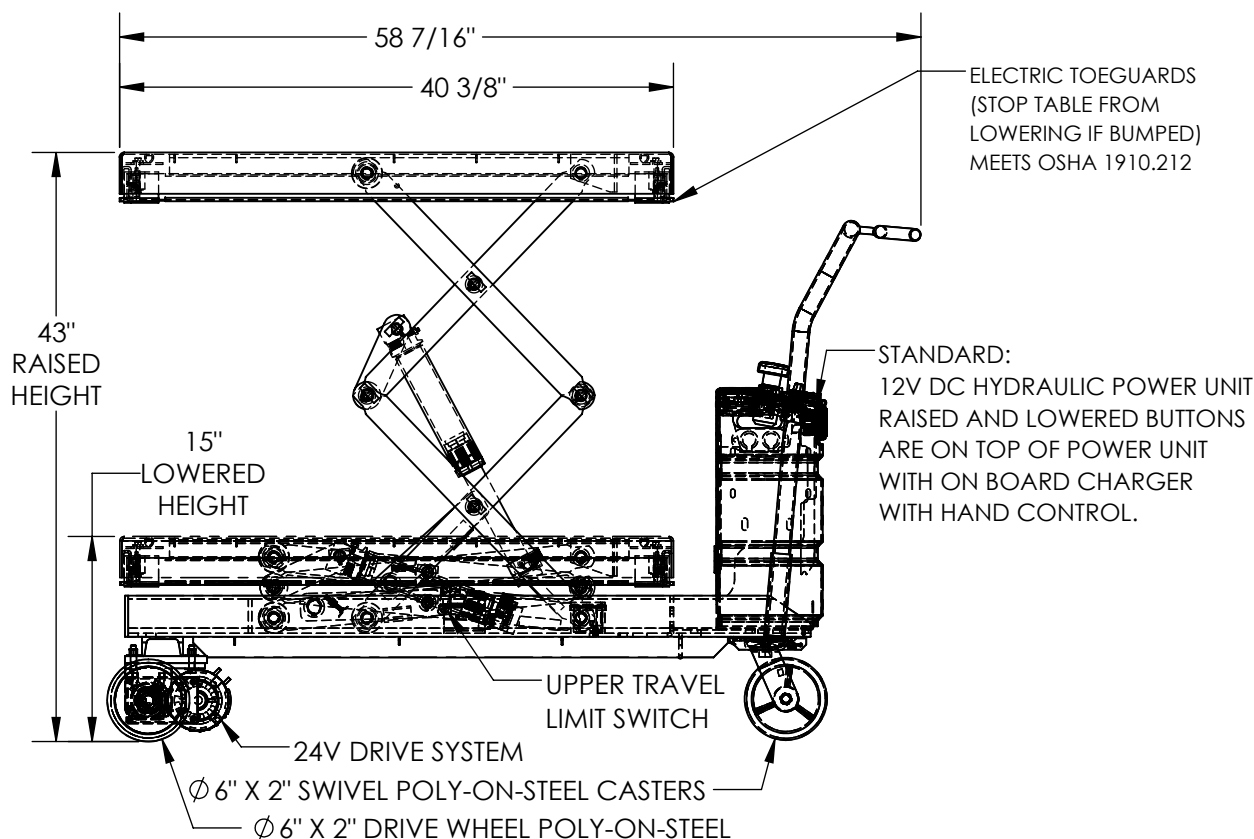


TRACTION DRIVE ELECTRIC HYDRAULIC SCISSOR LIFT CART - CARTD-750-2040-CTD

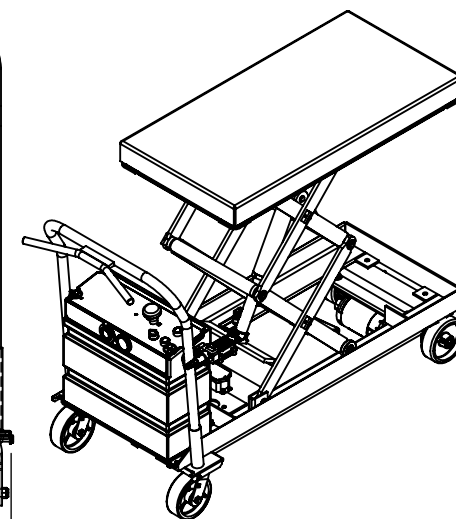
APPROX WEIGHT: 431.82 lbs.
DOES NOT INCLUDE WEIGHT OF POWER OR PACKAGING!!!

*** ANY ADDITIONS, DELETIONS, OR OMISSIONS MUST BE CORRECTED ON THIS DRAWING AS THIS DRAWING WILL BE CONSIDERED ALL INCLUSIVE ***

ALL GRAPHICS PROVIDED ARE FOR REFERENCE ONLY. IF CERTAIN DIMENSIONS ARE CRITICAL PLEASE VERIFY THOSE DIMENSIONS WITH YOUR SALESPERSON



DECK TOLERANCE $\pm 1/2"$
TABLE HEIGHT TOLERANCES $\pm 1/2"$
DECK FLATNESS $\pm 1/4"$



DIMENSION TOLERANCE $\pm 1/4"$

STANDARD FEATURES

MODEL NUMBER IS CARTD-750-2040-CTD
DECK WIDTH IS 20 3/8"
DECK LENGTH IS 40 3/8"
RAISED HEIGHT IS 43"
LOWERED HEIGHT IS 15"
Ø 6" X 2" DRIVE WHEEL POLY-ON-STEEL
Ø 6" X 2" SWIVEL POLY-ON-STEEL CASTERS
TABLE CAPACITY (EVENLY DISTRIBUTED)
MAX CAPACITY IS 750 LBS
CONTROL IS HANDHELD 2 BUTTON, NEMA 4 PENDANT
WITH MINIMUM 8' USABLE COIL CORD
SAFETY MAINTENANCE PROPS, DISPLACEMENT
STYLE CYLINDERS INSTALLED ROD DOWN
EMERGENCY SAFETY STOP HYDRAULIC FUSES
UPPER TRAVEL LIMIT SWITCH
ELECTRIC PINCH POINT GUARD
DURABLE LIQUID PAINT BLUE FINISH

SPECIAL FEATURES

NONE

APPROVAL

I, THE UNDERSIGNED, AGREE THAT THE PRODUCT AS REPRESENTED SATISFIES DESIGN AND DIMENSION REQUIREMENTS. I ALSO ACKNOWLEDGE MY DUTY TO CONFIRM PRODUCT AND INSTALLATION COMPLIANCE WITH ALL APPLICABLE FEDERAL, STATE AND LOCAL REGULATIONS AND STANDARDS.
UNITS REQUIRING APPROVAL DRAWINGS OR MODIFIED ARE NON-RETURNABLE

[] As drawn [] As marked

Signed: _____ Date: _____

Printed Name: _____

LEAD TIME WILL START UPON RECEIPT OF SIGNED APPROVAL DRAWING

DISTRIBUTOR'S NAME:		P.O.#
VESTIL MANUFACTURING		X
DRAWN BY: CRA		W.O.#
DATE: 10/18/2017		X
REFERENCE: X	SCALE: 1:14	SALES: X
QUOTED LEAD TIME: X	QUOTE # X	FILE NAME:
		01-007-375