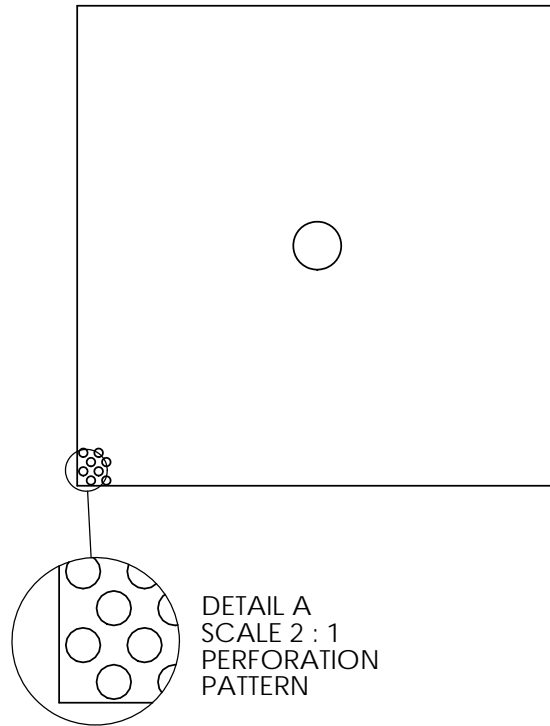
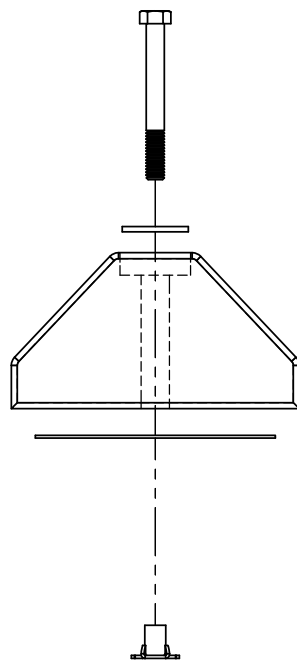
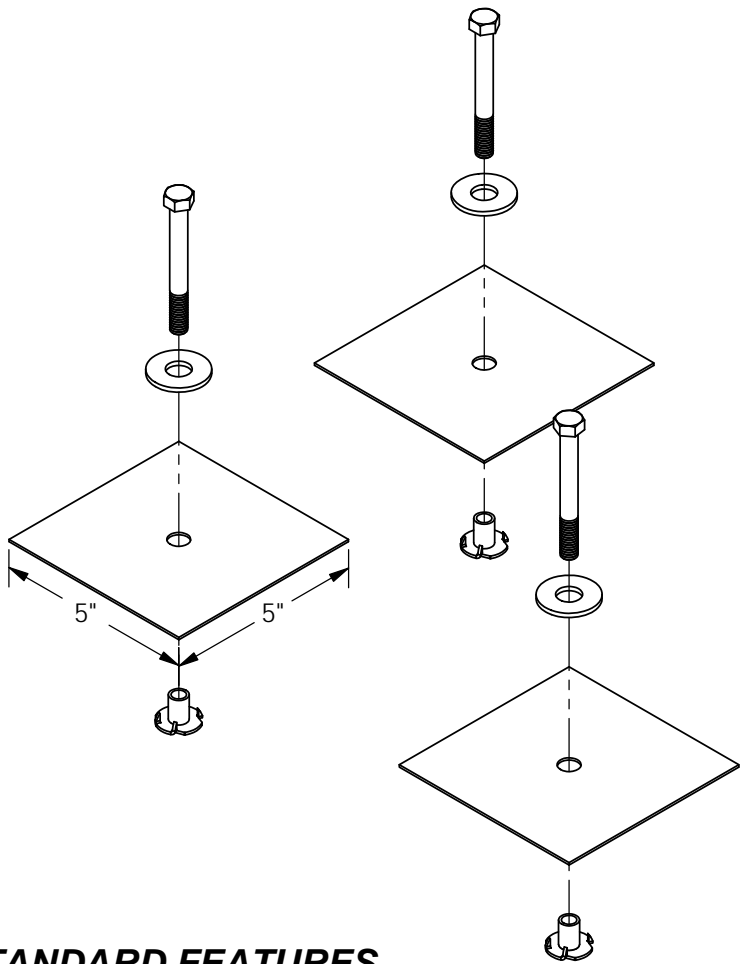


APPROX WEIGHT: 1.80 lbs.
DOES NOT INCLUDE WEIGHT OF POWER OR PACKAGING!!!

GLUE DOWN ANCHOR PLATE KIT- CS-GD-3

*** ANY ADDITIONS, DELETIONS, OR OMISSIONS MUST BE CORRECTED ON THIS DRAWING AS THIS DRAWING WILL BE CONSIDERED ALL INCLUSIVE ***
ALL GRAPHICS PROVIDED ARE FOR REFERENCE ONLY. IF CERTAIN DIMENSIONS ARE CRITICAL PLEASE VERIFY THOSE DIMENSIONS WITH YOUR SALESPERSON



DETAIL A
SCALE 2 : 1
PERFORATION
PATTERN

DIMENSION TOLERANCE $\pm 1/4"$

STANDARD FEATURES

MODEL NUMBER IS CS-GD-3
FOR USE WITH 3 HOLE CAR STOPS
KIT INCLUDES:
3 PERFORATED ANCHOR PLATES
3 T-NUTS
3 WASHERS
3 BOLTS
EACH ANCHOR PLATE REQUIRES 3 OZ.
OF 2-PART EPOXY (NOT INCLUDED)

SPECIAL FEATURES

NONE

APPROVAL	I, THE UNDERSIGNED, AGREE THAT THE PRODUCT AS REPRESENTED SATISFIES DESIGN AND DIMENSION REQUIREMENTS. I ALSO ACKNOWLEDGE MY DUTY TO CONFIRM PRODUCT AND INSTALLATION COMPLIANCE WITH ALL APPLICABLE FEDERAL, STATE AND LOCAL REGULATIONS AND STANDARDS.	
	ANY MODIFIED UNITS ARE NON-RETURNABLE	
	[] As drawn [] As marked	
	Signed: _____ Date: _____	
Printed Name: _____		
LEAD TIME WILL START UPON RECEIPT OF SIGNED APPROVAL DRAWING		

FOR INTERNAL USE ONLY PROJECT SIGN OFF		DISTRIBUTOR'S NAME:		P.O.#	
		VESTIL MANUFACTURING		X	
SALES		DRAWN BY: T. MOORE	DATE: 06/16/10	W.O.#	X
ENG.		REFERENCE: X	SCALE: 1:4	SALES:	X
FAB.		QUOTED LEAD TIME: X	QUOTE #	FILE NAME:	
POWER			X		29-007-124