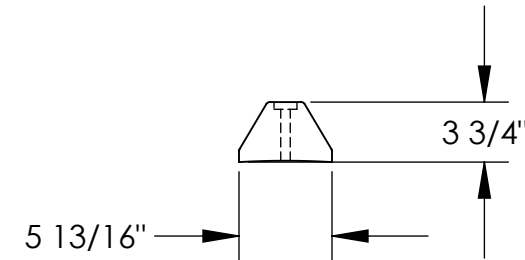
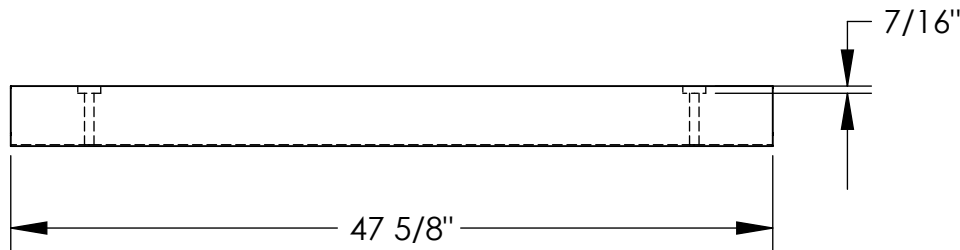
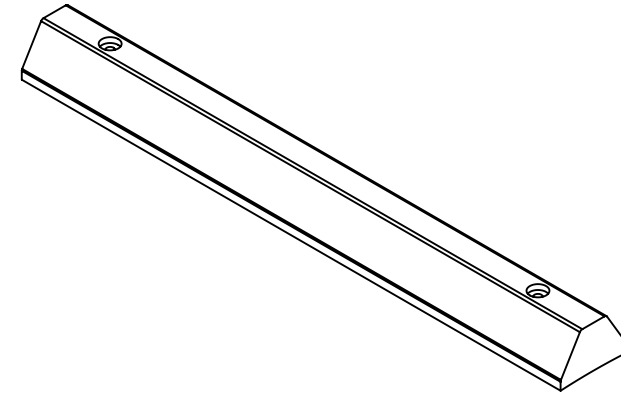
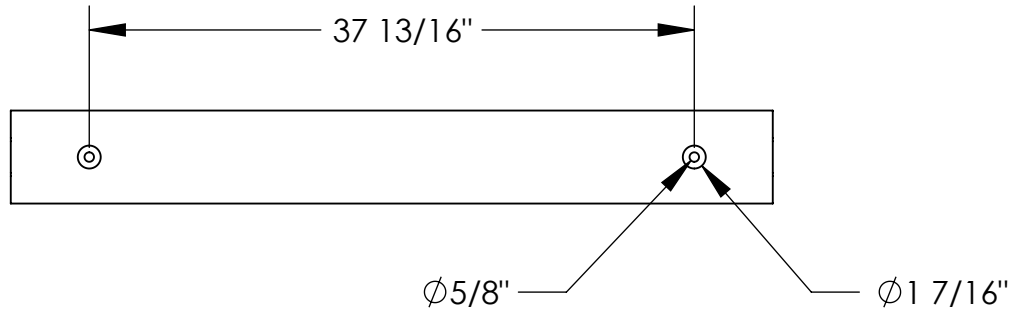


CAR STOP- GRAY: CS-S48-G

*** ANY ADDITIONS, DELETIONS, OR OMISSIONS MUST BE CORRECTED ON THIS DRAWING AS THIS DRAWING WILL BE CONSIDERED ALL INCLUSIVE ***

APPROXIMATE WEIGHT IS: 215.40 lbs.

ALL GRAPHICS PROVIDED ARE FOR REFERENCE ONLY. IF CERTAIN DIMENSIONS ARE CRITICAL PLEASE VERIFY THOSE DIMENSIONS WITH YOUR SALESPERSON



**ALL SPECIAL UNITS
ARE NON-RETURNABLE**

STANDARD FEATURES

MODEL NUMBER IS: CS-S48-G
OVERALL WIDTH IS: 5 13/16"
USABLE WIDTH IS: 5 13/16"
OVERALL LENGTH IS: 47 5/8"
USABLE LENGTH IS: 47 5/8"
OVERALL HEIGHT IS: 3 3/4"
COUNTERBORE DEPTH IS: 7/16"

SPECIAL FEATURES

NONE

A P P R O V A L	I, the undersigned, hereby approve this print. This includes my approval of design & dimensions	
	<input type="checkbox"/> As drawn <input type="checkbox"/> As marked	
	Signed: _____ Date: _____	
	LEAD TIME WILL START UPON RECEIPT OF SIGNED APPROVAL DRAWING	

DISTRIBUTOR'S NAME: VESTIL MANUFACTURING		P.O.# X
DRAWN BY: T. Moore		W.O.# X
DATE: 03/13/08	SCALE: 1:12	SALES: X
REFERENCE: X	QUOTE # X	FILE NAME: 29-007-081