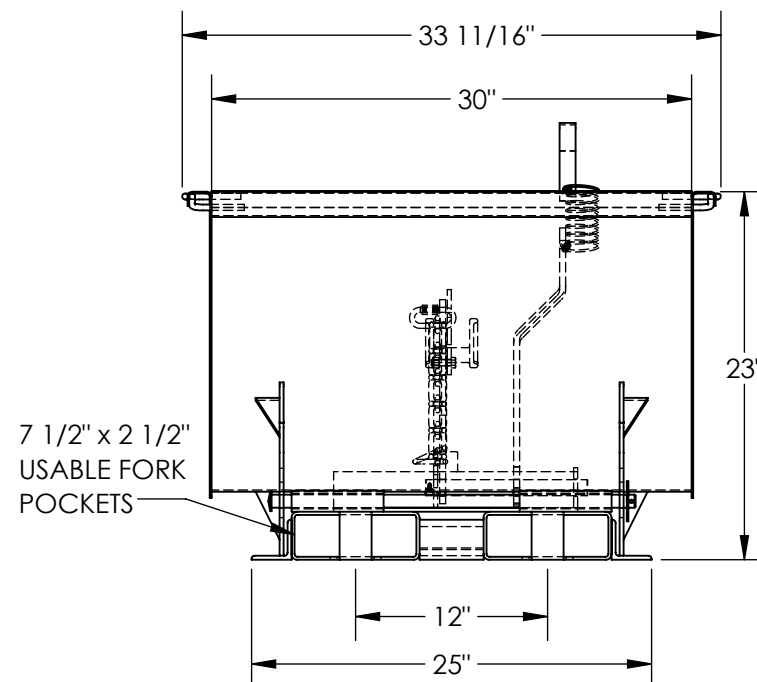
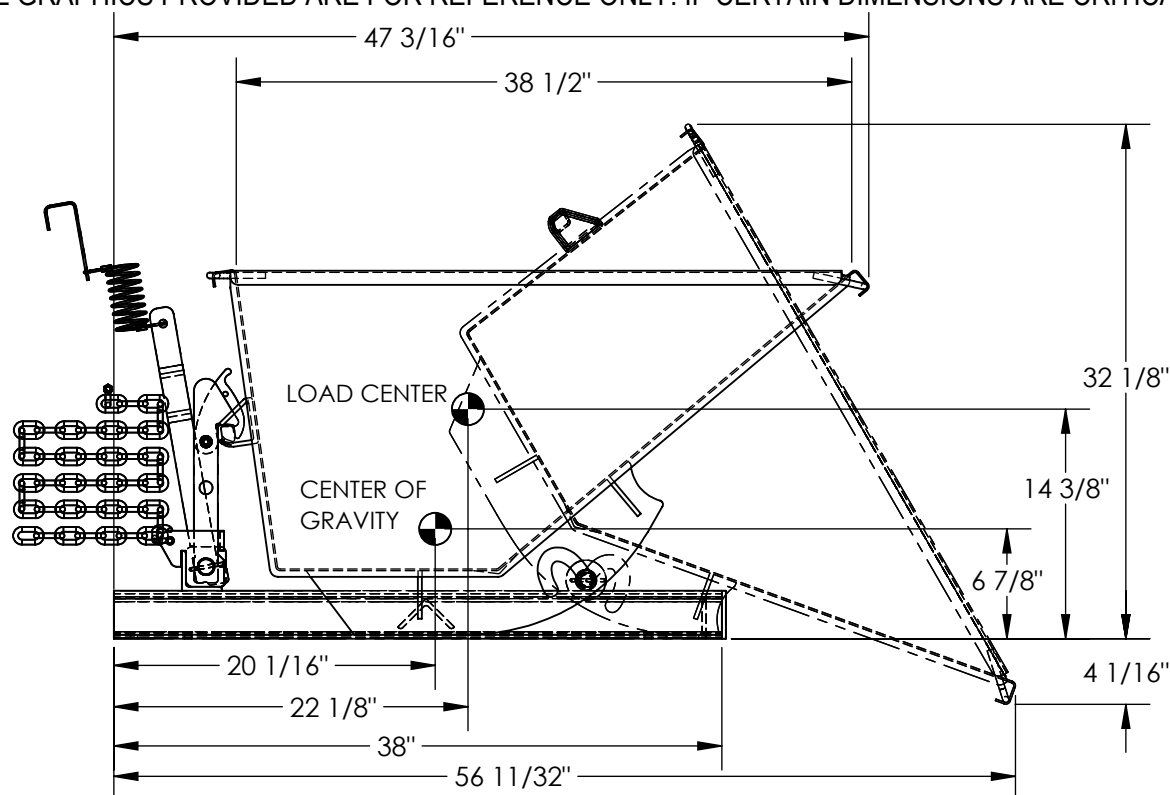


SELF-DUMPING STEEL HOPPER - D-33-LD-LP

APPROX WEIGHT: 246 lbs.
DOES NOT INCLUDE WEIGHT OF POWER OR PACKAGING!!!

*** ANY ADDITIONS, DELETIONS, OR OMISSIONS MUST BE CORRECTED ON THIS DRAWING AS THIS DRAWING WILL BE CONSIDERED ALL INCLUSIVE ***

ALL GRAPHICS PROVIDED ARE FOR REFERENCE ONLY. IF CERTAIN DIMENSIONS ARE CRITICAL PLEASE VERIFY THOSE DIMENSIONS WITH YOUR SALESPERSON



STANDARD FEATURES

MODEL NUMBER IS D-33-LD-LP
VOLUME IS 1/3 CU. YDS.
OVERALL WIDTH IS 33 11/16"
USABLE WIDTH IS 30"
OVERALL LENGTH IS 47 3/16"
USABLE LENGTH IS 38 1/2"
OVERALL HEIGHT IS 23"
MAX CAPACITY IS 2,000 LBS.
DUMP ANGLE IS 60°
PULL CABLE IS AT LEAST 48"
TOUGH BAKED IN POWDER
COATED BLUE FINISH

SPECIAL FEATURES

NONE

APPROX. WEIGHT / LOST LOAD = 246 LBS.

MINIMUM EFFECTIVE THICKNESS =

FORK LENGTH MINUS 38"

VERTICAL CENTER OF GRAVITY = 6 7/8"

HORIZONTAL CENTER OF GRAVITY = 20 1/16"

NEVER EXCEED LOAD CENTER

RATING PER FORKTRUCK

MANUFACTURERS GUIDELINES.

DO NOT USE THIS FORK TRUCK

ATTACHMENT IF LOAD WILL EXCEED

FORK TRUCK MANUFACTURER'S

LOAD CENTER RATING

DIMENSION TOLERANCE ± 1/4"

APPROVAL

I, THE UNDERSIGNED, AGREE THAT THE PRODUCT AS REPRESENTED SATISFIES DESIGN AND DIMENSION REQUIREMENTS. I ALSO ACKNOWLEDGE MY DUTY TO CONFIRM PRODUCT AND INSTALLATION COMPLIANCE WITH ALL APPLICABLE FEDERAL, STATE AND LOCAL REGULATIONS AND STANDARDS.
UNITS REQUIRING APPROVAL DRAWINGS OR MODIFIED ARE NON-RETURNABLE

[] As drawn [] As marked

Signed: _____ Date: _____

Printed Name: _____

LEAD TIME WILL START UPON RECEIPT OF SIGNED APPROVAL DRAWING

DISTRIBUTOR'S NAME:

VESTIL MANUFACTURING

DRAWN BY: JWW

DATE: 10/12/2022

REFERENCE: X

SCALE: 1:12

QUOTED LEAD TIME: X

QUOTE # X

P.O.# X

W.O.# X

SALES: X

FILE NAME:

37-007-193