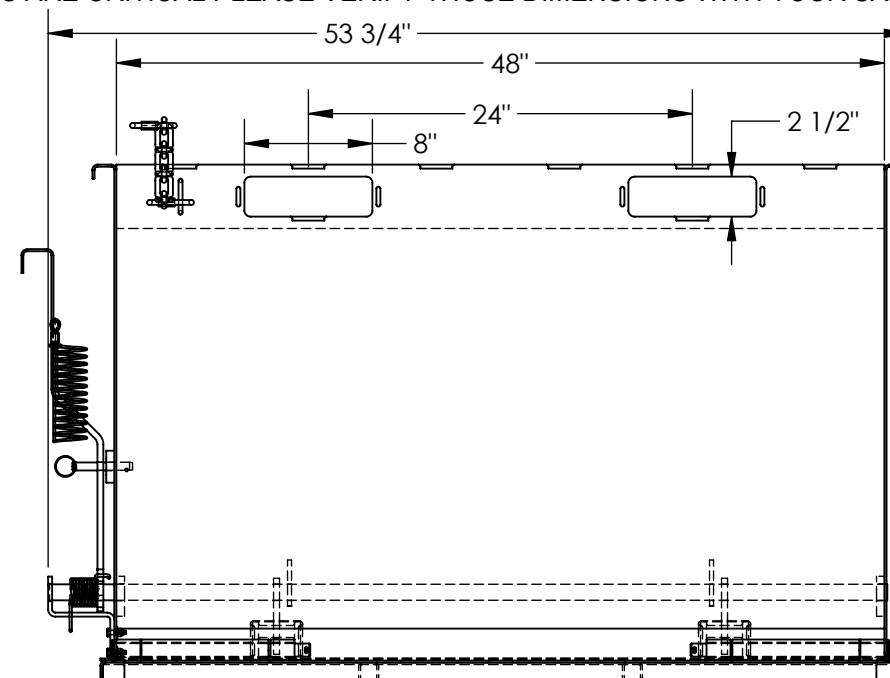
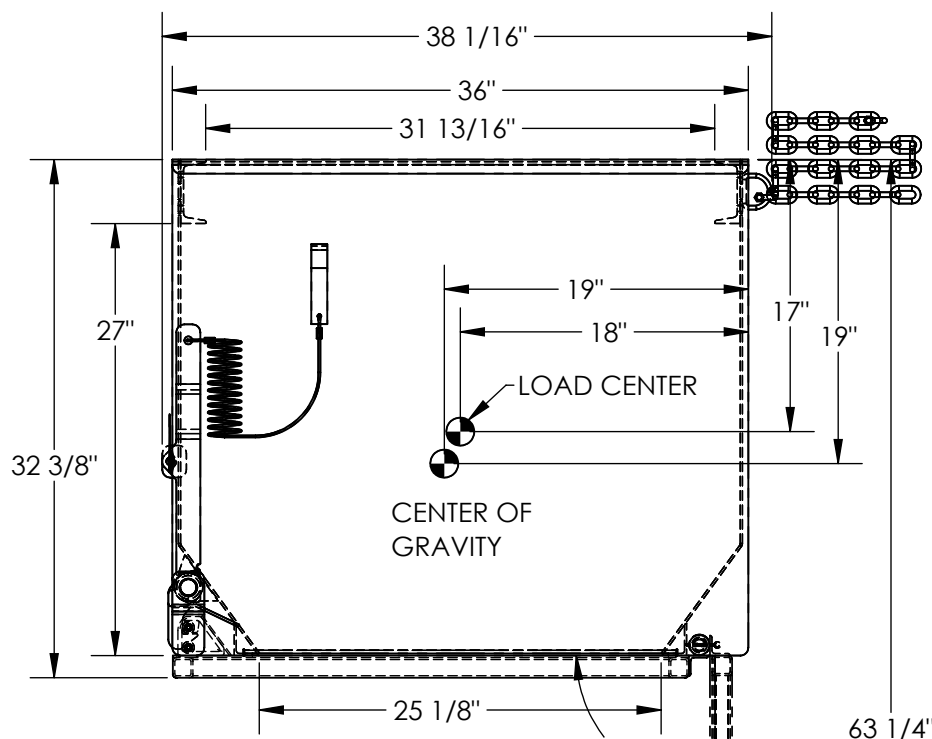


# DROP BOTTOM HOPPER - DBH-100-3

APPROX WEIGHT: 383 lbs.  
DOES NOT INCLUDE WEIGHT OF POWER OR PACKAGING!!!

\*\*\* ANY ADDITIONS, DELETIONS, OR OMISSIONS MUST BE CORRECTED ON THIS DRAWING AS THIS DRAWING WILL BE CONSIDERED ALL INCLUSIVE \*\*\*

ALL GRAPHICS PROVIDED ARE FOR REFERENCE ONLY. IF CERTAIN DIMENSIONS ARE CRITICAL PLEASE VERIFY THOSE DIMENSIONS WITH YOUR SALESPERSON



APPROX. WEIGHT / LOST LOAD = 383 LBS.  
MINIMUM EFFECTIVE THICKNESS = LESS THAN 1"  
VERTICAL CENTER OF GRAVITY = 19"  
HORIZONTAL CENTER OF GRAVITY = 19"

## STANDARD FEATURES

MODEL NUMBER IS DBH-100-3  
VOLUME IS 1 CU. YDS.  
MAX CAPACITY IS 3,000 LBS.  
OVERALL WIDTH IS 53 3/4"  
OVERALL LENGTH IS 38 1/16"  
OVERALL HEIGHT IS 32 3/8"  
PULL CABLE IS AT LEAST 48" LONG  
8" X 2 1/2" USABLE FORK POCKET  
ON 24" CENTERS  
TOP OPENING IS 31 13/16" LONG BY 48" WIDE  
BOTTOM OPENING IS 25 1/8" LONG BY 48" WIDE  
TOUGH BAKED IN POWDER COATED BLUE FINISH

## SPECIAL FEATURES

NONE

DUMPED

NEVER EXCEED LOAD CENTER  
RATING PER FORKTRUCK  
MANUFACTURERS GUIDELINES.  
DO NOT USE THIS FORK TRUCK  
ATTACHMENT IF LOAD WILL EXCEED  
FORK TRUCK MANUFACTURER'S  
LOAD CENTER RATING

DIMENSION TOLERANCE  $\pm 1/4"$

APPROVAL

I, THE UNDERSIGNED, AGREE THAT THE PRODUCT AS REPRESENTED SATISFIES DESIGN AND DIMENSION REQUIREMENTS. I ALSO ACKNOWLEDGE MY DUTY TO CONFIRM PRODUCT AND INSTALLATION COMPLIANCE WITH ALL APPLICABLE FEDERAL, STATE AND LOCAL REGULATIONS AND STANDARDS.  
**UNITS REQUIRING APPROVAL DRAWINGS OR MODIFIED ARE NON-RETURNABLE**

[ ] As drawn [ ] As marked

Signed: \_\_\_\_\_ Date: \_\_\_\_\_

Printed Name: \_\_\_\_\_

LEAD TIME WILL START UPON RECEIPT OF SIGNED APPROVAL DRAWING

DISTRIBUTOR'S NAME:		P.O.#
VESTIL MANUFACTURING		X
DRAWN BY: JWW		W.O.#
DATE: 5/19/2023		X
REFERENCE: X	SCALE: 1:12	SALES: X
QUOTED LEAD TIME: X	QUOTE # X	FILE NAME:
		37-007-200