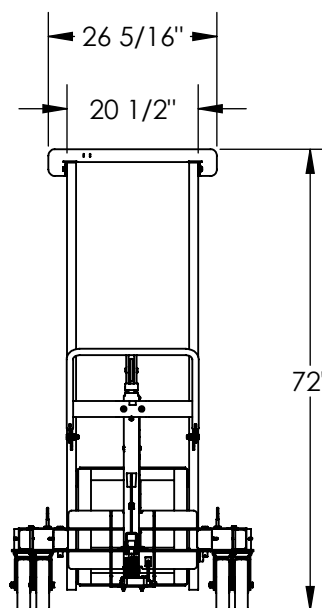
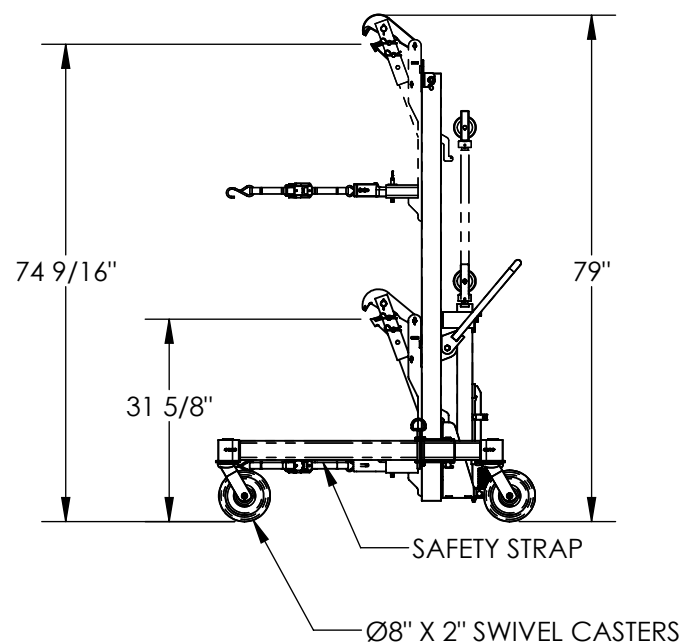
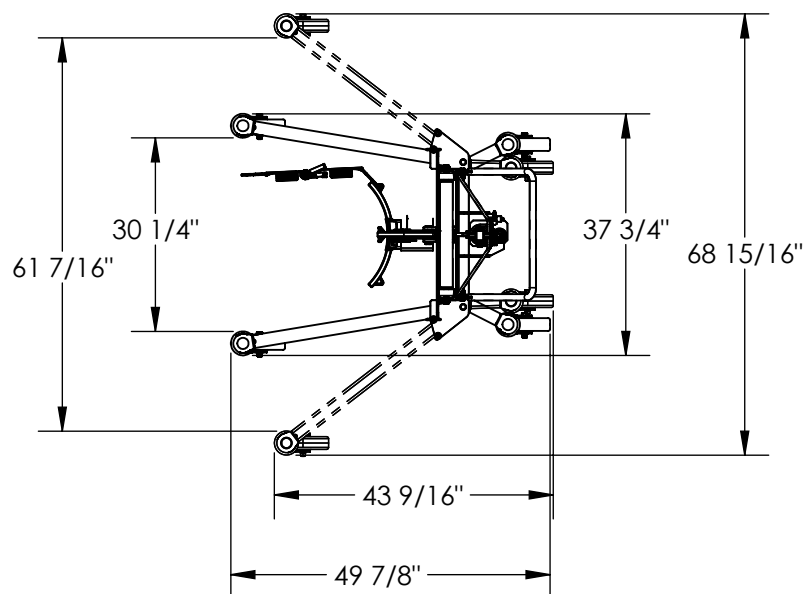


ECONOMICAL DRUM TRANSPORTER - DCR-880-H-HP

APPROX WEIGHT: 300.32 lbs.
DOES NOT INCLUDE WEIGHT OF POWER OR PACKAGING!!!

*** ANY ADDITIONS, DELETIONS, OR OMISSIONS MUST BE CORRECTED ON THIS DRAWING AS THIS DRAWING WILL BE CONSIDERED ALL INCLUSIVE ***

ALL GRAPHICS PROVIDED ARE FOR REFERENCE ONLY. IF CERTAIN DIMENSIONS ARE CRITICAL PLEASE VERIFY THOSE DIMENSIONS WITH YOUR SALESPERSON



STANDARD FEATURES

MODEL NUMBER: DCR-880-H-HP
CAPACITY: 880 LBS.
FRAME HEIGHT: 72"
MAX. OVERALL HEIGHT: 79"
MAX. OVERALL LENGTH: 49 7/8"
MIN. OVERALL LENGTH: 43 9/16"
MAX OVERALL WIDTH: 68 15/16"
MIN. OVERALL WIDTH: 37 3/4"
MAX INSIDE WIDTH: 61 7/16"
MIN. INSIDE WIDTH: 30 1/4"
RAISED JAW HEIGHT: 74 9/16"
LOWERED JAW HEIGHT: 31 5/8"
FOOT PUMP OPERATION
(4) Ø8" x 2" SWIVEL CASTERS
INCLUDES SAFETY STRAP
TOUGH BAKED IN POWDER COATED YELLOW FINISH

SPECIAL FEATURES

NONE

DIMENSION TOLERANCE $\pm 1/4"$

APPROVAL	I, THE UNDERSIGNED, AGREE THAT THE PRODUCT AS REPRESENTED SATISFIES DESIGN AND DIMENSION REQUIREMENTS. I ALSO ACKNOWLEDGE MY DUTY TO CONFIRM PRODUCT AND INSTALLATION COMPLIANCE WITH ALL APPLICABLE FEDERAL, STATE AND LOCAL REGULATIONS AND STANDARDS.	
	UNITS REQUIRING APPROVAL DRAWINGS OR MODIFIED ARE NON-RETURNABLE	
	[] As drawn [] As marked	
	Signed: _____ Date: _____	
Printed Name: _____		
LEAD TIME WILL START UPON RECEIPT OF SIGNED APPROVAL DRAWING		

DISTRIBUTOR'S NAME:		P.O.#
VESTIL MANUFACTURING		X
DRAWN BY: MAS		W.O.#
DATE: 06/23/2021		X
REFERENCE: X	SCALE: 1:30	SALES: X
QUOTED LEAD TIME: X	QUOTE # X	FILE NAME: 40-007-022