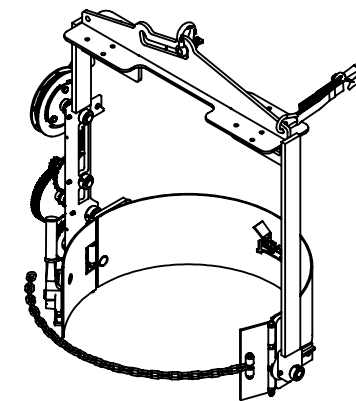
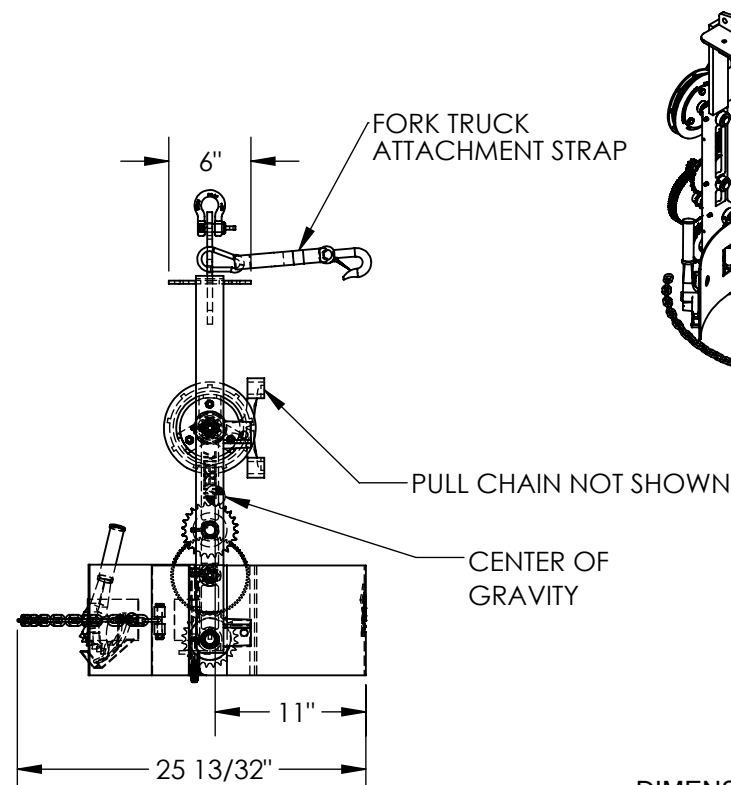
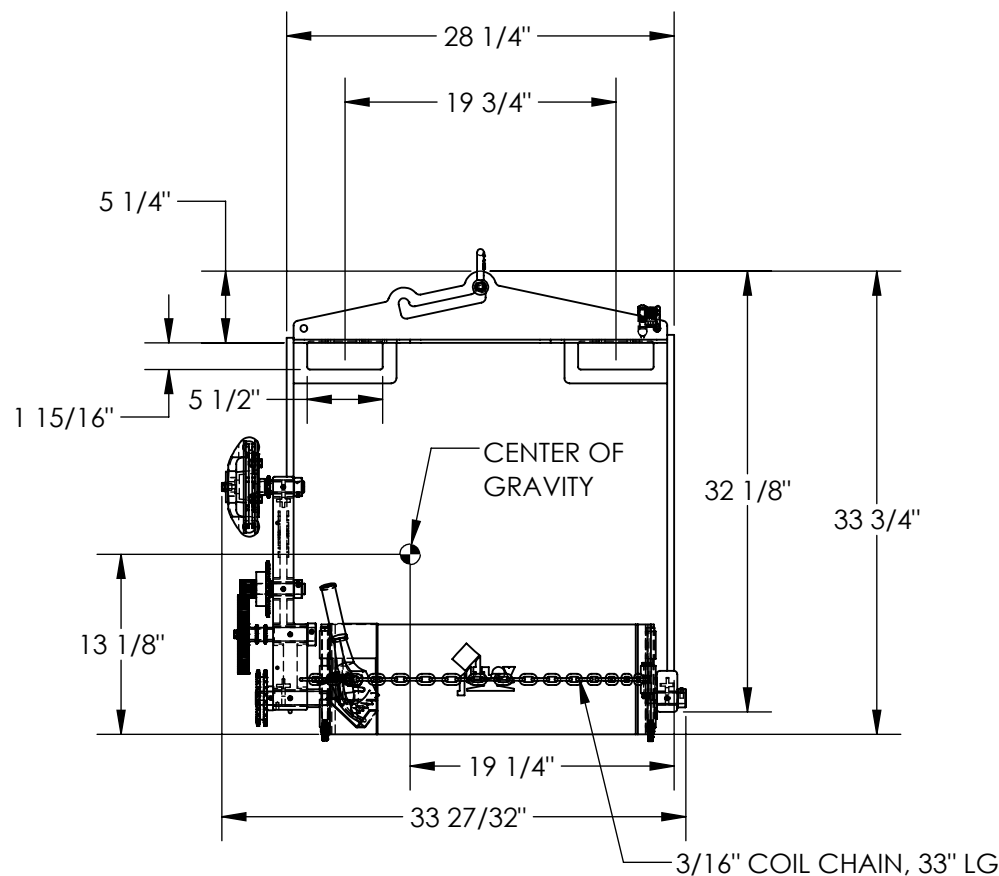


DRUM CARRIER / ROTATOR - DCT-85

APPROX WEIGHT: 94 lbs.
DOES NOT INCLUDE WEIGHT OF POWER OR PACKAGING!!!

*** ANY ADDITIONS, DELETIONS, OR OMISSIONS MUST BE CORRECTED ON THIS DRAWING AS THIS DRAWING WILL BE CONSIDERED ALL INCLUSIVE ***

ALL GRAPHICS PROVIDED ARE FOR REFERENCE ONLY. IF CERTAIN DIMENSIONS ARE CRITICAL PLEASE VERIFY THOSE DIMENSIONS WITH YOUR SALESPERSON



DIMENSION TOLERANCE $\pm 1/4"$

STANDARD FEATURES

MODEL NUMBER: DCT-85
ROTATION METHOD: 15' CHAIN
ACCEPTS 55 GALLON STEEL DRUMS
MAX CAPACITY: 1,500 LBS.
FORK POCKETS (5 1/2"W x 1 15/16"H)
FORK TRUCK ATTACHMENT STRAP
TWO POSITION LIFTING BAIL
DURABLE LIQUID PAINT BLUE FINISH

HORIZONTAL CENTER OF GRAVITY: 11"
VERTICAL CENTER OF GRAVITY: 19 1/4"
LOST LOAD: 94 LBS

OPTIONS (AVAILABLE AT EXTRA COST)

HAND CRANK: DCT-R-HC
FIBER DRUM ADAPTER: FDA-800
30 GALLON STEEL SADDLE: FDC-30

SPECIAL FEATURES

NONE

APPROVAL

I, THE UNDERSIGNED, AGREE THAT THE PRODUCT AS REPRESENTED SATISFIES DESIGN AND DIMENSION REQUIREMENTS. I ALSO ACKNOWLEDGE MY DUTY TO CONFIRM PRODUCT AND INSTALLATION COMPLIANCE WITH ALL APPLICABLE FEDERAL, STATE AND LOCAL REGULATIONS AND STANDARDS.

ANY MODIFIED UNITS ARE NON-RETURNABLE

[] As drawn [] As marked

Signed: _____ Date: _____

Printed Name: _____

LEAD TIME WILL START UPON RECEIPT OF SIGNED APPROVAL DRAWING

FOR INTERNAL USE ONLY
PROJECT SIGN OFF

| | |
|-------|--|
| SALES | |
| ENG. | |
| FAB. | |
| POWER | |

DISTRIBUTOR'S NAME:

VESTIL MANUFACTURING

P.O.#

X

W.O.#

X

DRAWN BY: JB

DATE: 01/16/12

SALES: X

REFERENCE: X

SCALE: 1:14

FILE NAME:

QUOTED LEAD TIME: X

QUOTE # X

40-007-015