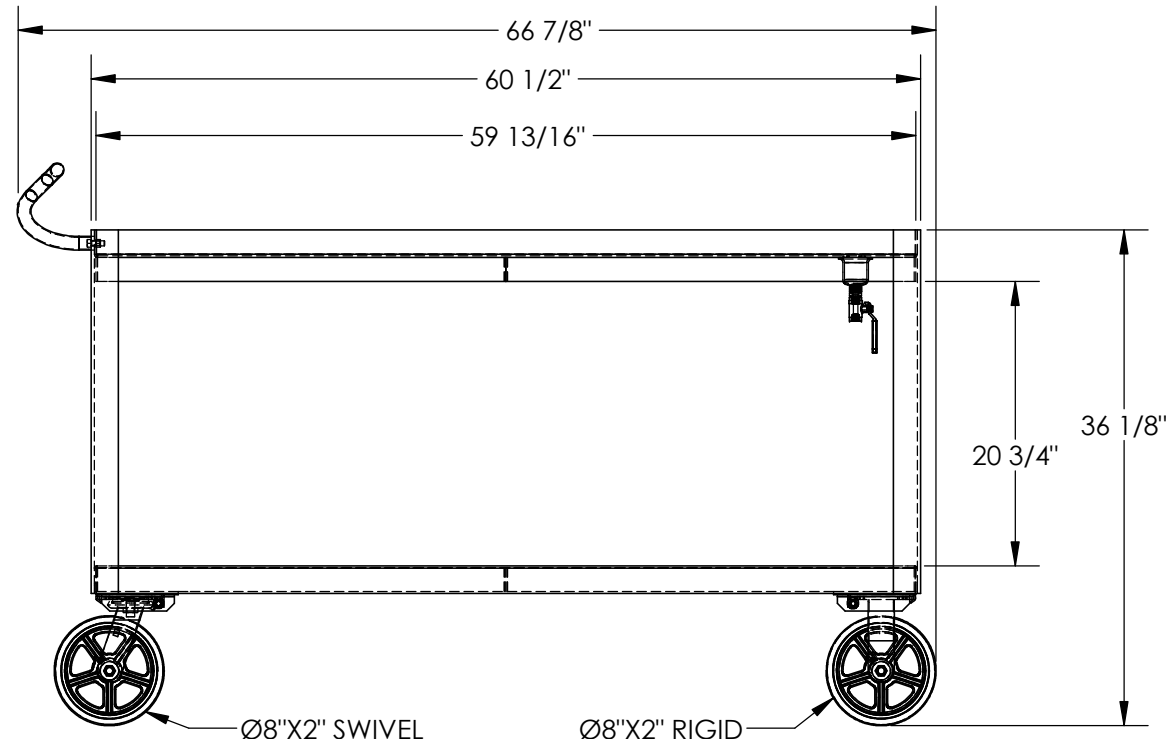
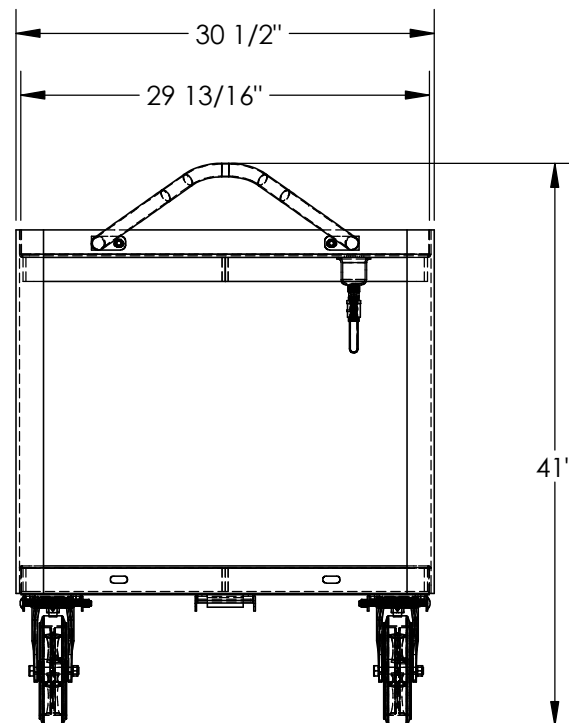


ERGO DRAIN CART - DH-MR2-3060-D

APPROX WEIGHT: 282.07 lbs.
DOES NOT INCLUDE WEIGHT OF POWER OR PACKAGING!!!

*** ANY ADDITIONS, DELETIONS, OR OMISSIONS MUST BE CORRECTED ON THIS DRAWING AS THIS DRAWING WILL BE CONSIDERED ALL INCLUSIVE ***

ALL GRAPHICS PROVIDED ARE FOR REFERENCE ONLY. IF CERTAIN DIMENSIONS ARE CRITICAL PLEASE VERIFY THOSE DIMENSIONS WITH YOUR SALESPERSON



STANDARD FEATURES

MODEL NUMBER IS DH-MR2-3060-D
MAXIMUM CART CAPACITY IS 2,400 LBS.
MAXIMUM SHELF CAPACITY IS 2,000 LBS.
NOT TO EXCEED MAXIMUM CAPACITY OF THE CART
OVERALL WIDTH IS : 30 1/2"
USABLE WIDTH IS : 29 13/16"
OVERALL LENGTH IS : 66 7/8"
USABLE LENGTH IS : 59 13/16"
OVERALL HEIGHT IS : 41"
SHELF CLEARANCE : 20 3/4"
2 RIGID 8" X 2" MOLDED-ON-RUBBER CASTERS
2 SWIVEL 8" X 2" MOLDED-ON-RUBBER CASTERS
STEEL CONSTRUCTION

STANDARD FEATURES

NONE

DIMENSION TOLERANCE $\pm 1/4"$

APPROVAL

I, THE UNDERSIGNED, AGREE THAT THE PRODUCT AS REPRESENTED SATISFIES DESIGN AND DIMENSION REQUIREMENTS. I ALSO ACKNOWLEDGE MY DUTY TO CONFIRM PRODUCT AND INSTALLATION COMPLIANCE WITH ALL APPLICABLE FEDERAL, STATE AND LOCAL REGULATIONS AND STANDARDS.

ANY MODIFIED UNITS ARE NON-RETURNABLE

[] As drawn [] As marked

Signed: _____ Date: _____

Printed Name: _____

LEAD TIME WILL START UPON RECEIPT OF SIGNED APPROVAL DRAWING

FOR INTERNAL USE ONLY
PROJECT SIGN OFF

SALES	
ENG.	
FAB.	
POWER	

DISTRIBUTOR'S NAME:

VESTIL MANUFACTURING

DRAWN BY: DLS

DATE: 08/03/2012

REFERENCE: X

SCALE: 1:14

QUOTED LEAD TIME: X

QUOTE # X

P.O.# X

W.O.# X

SALES: X

FILE NAME:

16-007-341