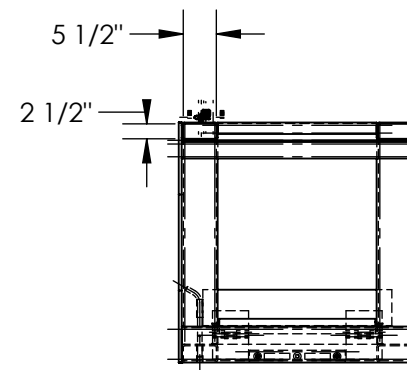
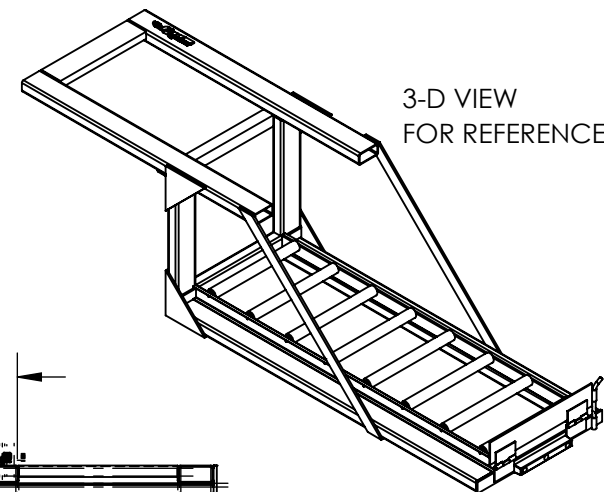
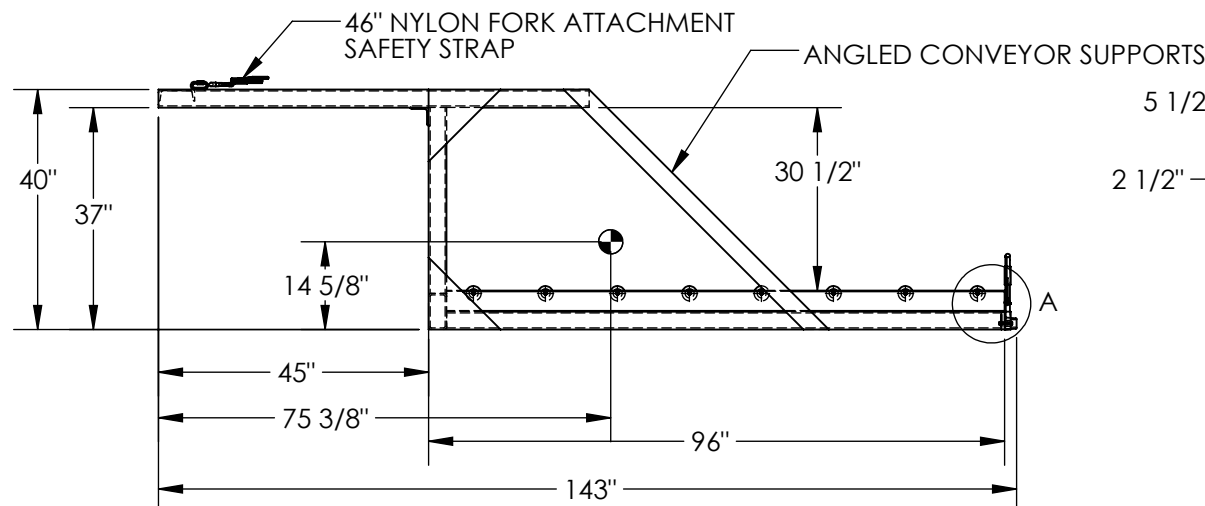
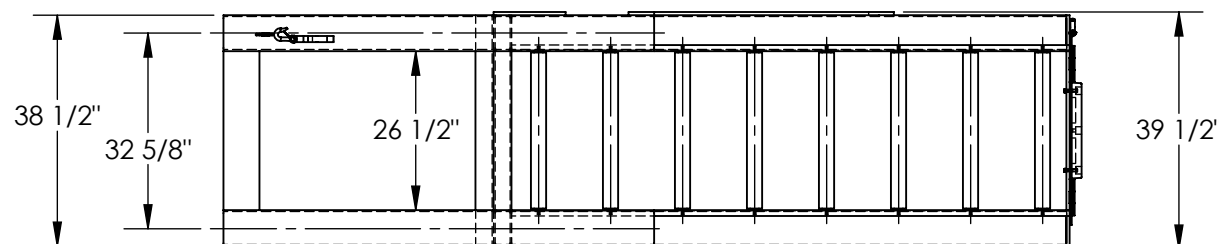


DOCK PRO- BELOW DOCK LOADED - DP-3896-15

APPROX WEIGHT: 989.94 lbs.
DOES NOT INCLUDE WEIGHT OF POWER OR PACKAGING!!!

*** ANY ADDITIONS, DELETIONS, OR OMISSIONS MUST BE CORRECTED ON THIS DRAWING AS THIS DRAWING WILL BE CONSIDERED ALL INCLUSIVE ***

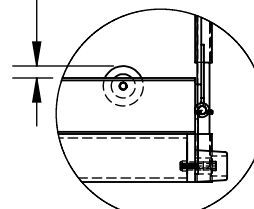
ALL GRAPHICS PROVIDED ARE FOR REFERENCE ONLY. IF CERTAIN DIMENSIONS ARE CRITICAL PLEASE VERIFY THOSE DIMENSIONS WITH YOUR SALESPERSON



STANDARD FEATURES

MODEL NUMBER IS DP-3896-15
OVERALL WIDTH IS 39 1/2"
WIDTH BETWEEN ANGLED SUPPORTS IS 38 1/2"
WIDTH BETWEEN CONVEYOR FRAMES IS 26 1/2"
OVERALL LENGTH IS 143"
USABLE LENGTH IS 96"
OVERALL HEIGHT IS 40"
MAX CAPACITY IS 1,500 LBS.
USABLE FORK POCKET DIMENSIONS 5 1/2" X 2 1/2"
BELOW DOCK SERVICE HEIGHT- 30 1/2"
FORK POCKET CENTER TO CENTER 32 5/8"
EFFECTIVE THICKNESS = LESS THAN 1"
WEIGHT / LOST LOAD = 990 LBS. (APPROX)

3/4" (CONVEYOR RAIL
TO TOP OF ROLLER)



DETAIL A
SCALE 1 : 12

SPECIAL FEATURES
NONE

DIMENSION TOLERANCE $\pm 1/4"$

**A
P
P
R
O
V
A
L**

I, THE UNDERSIGNED, AGREE THAT THE PRODUCT AS REPRESENTED SATISFIES DESIGN AND DIMENSION REQUIREMENTS. I ALSO ACKNOWLEDGE MY DUTY TO CONFIRM PRODUCT AND INSTALLATION COMPLIANCE WITH ALL APPLICABLE FEDERAL, STATE AND LOCAL REGULATIONS AND STANDARDS.
UNITS REQUIRING APPROVAL DRAWINGS OR MODIFIED ARE NON-RETURNABLE
☐ As drawn ☐ As marked

Signed: _____ Date: _____

Printed Name: _____

LEAD TIME WILL START UPON RECEIPT OF SIGNED APPROVAL DRAWING

DISTRIBUTOR'S NAME:

VESTIL MANUFACTURING

DRAWN BY: FA

DATE: 07/03/2014

REFERENCE: X

SCALE: 1:28

QUOTED LEAD TIME: X

QUOTE # X

P.O.# X

W.O.# X

SALES: X

FILE NAME:

08-007-257

NEVER EXCEED LOAD CENTER RATING
PER FORK TRUCK MANUFACTURER'S GUIDELINES.
DO NOT USE THIS FORK TRUCK ATTACHMENT IF LOAD WILL
EXCEED FORK TRUCK MANUFACTURER'S LOAD CENTER
RATING.