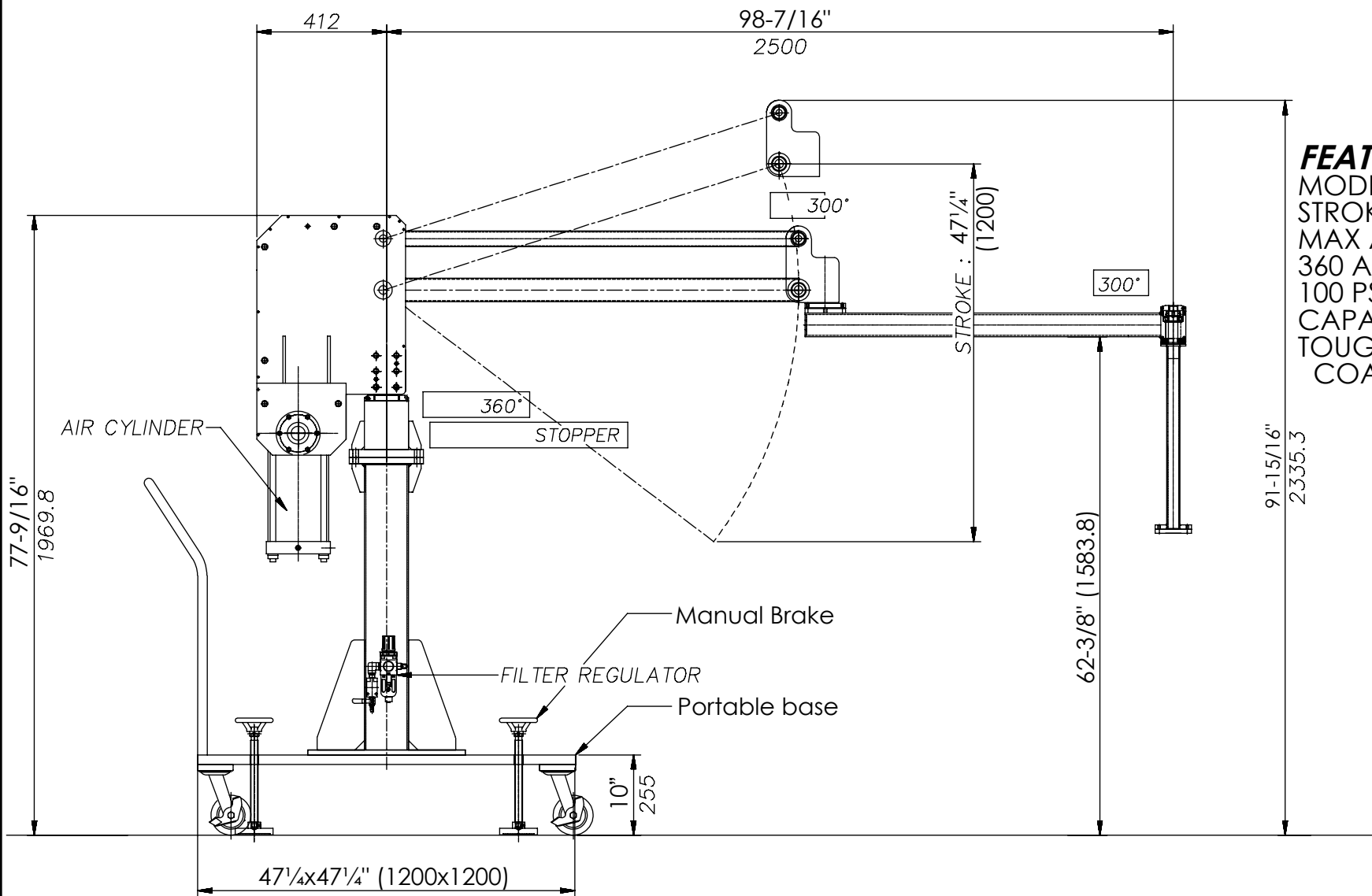


# AIR BALANCE JIB LIFTER- DSL-300-P

\*\*\* ANY ADDITIONS, DELETIONS, OR OMISSIONS MUST BE CORRECTED ON THIS DRAWING AS THIS DRAWING WILL BE CONSIDERED ALL INCLUSIVE \*\*\*

ALL GRAPHICS PROVIDED ARE FOR REFERENCE ONLY. IF CERTAIN DIMENSIONS ARE CRITICAL PLEASE VERIFY THOSE DIMENSIONS WITH YOUR SALESPERSON



## FEATURES

MODEL NO: DSL-300-P

STROKE: 47 1/4"

MAX ARM LENGTH: 78 1/4"

360° ARM ROTATION

100 PSI AIR PRESSURE

CAPACITY: 250 LBS

TOUGH BAKED IN POWDER

COAT YELLOW FINISH

APPROVAL

I, THE UNDERSIGNED, AGREE THAT THE PRODUCT AS REPRESENTED SATISFIES DESIGN AND DIMENSION REQUIREMENTS. I ALSO ACKNOWLEDGE MY DUTY TO CONFIRM PRODUCT AND INSTALLATION COMPLIANCE WITH ALL APPLICABLE FEDERAL, STATE AND LOCAL REGULATIONS AND STANDARDS.

**UNITS REQUIRING APPROVAL DRAWINGS OR MODIFIED ARE NON-RETURNABLE**

☐ As drawn ☐ As marked

Signed: \_\_\_\_\_ Date: \_\_\_\_\_

Printed Name: \_\_\_\_\_

LEAD TIME WILL START UPON RECEIPT OF SIGNED APPROVAL DRAWING

**DIMENSION TOLERANCE ± 1/2"**

FOR INTERNAL USE ONLY  
PROJECT SIGN OFF

SALES	
ENG.	
FAB.	
POWER	

DISTRIBUTOR'S NAME:

**VESTIL MANUFACTURING**

DRAWN BY: TM

DATE: 9/16/2020

REFERENCE: X

SCALE: 1:2

QUOTED LEAD TIME: X

QUOTE #  
X

P.O.# X

W.O.# X

SALES: X

FILE NAME:

DSL-300-P