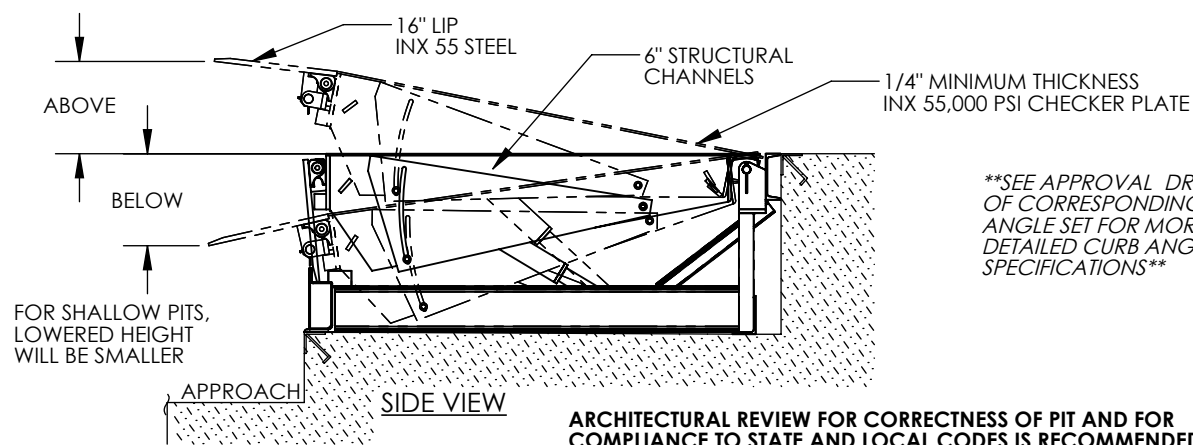


# ELECTRIC HYDRAULIC DOCKLEVELER - EH-710-40

APPROX WEIGHT: 2738 lbs.  
DOES NOT INCLUDE WEIGHT OF POWER OR PACKAGING!!!

\*\*\* ANY ADDITIONS, DELETIONS, OR OMISSIONS MUST BE CORRECTED ON THIS DRAWING AS THIS DRAWING WILL BE CONSIDERED ALL INCLUSIVE \*\*\*

ALL GRAPHICS PROVIDED ARE FOR REFERENCE ONLY. IF CERTAIN DIMENSIONS ARE CRITICAL PLEASE VERIFY THOSE DIMENSIONS WITH YOUR SALESPERSON



## STANDARD FEATURES

DOCKLEVELER MODEL NUMBER: EH-710-40  
PIT WIDTH IS 86 INCHES  
PIT LENGTH IS 110 INCHES  
PIT DEPTH IS 24 INCHES AT FRONT, 23 3/4 INCHES AT BACK  
DOCK HEIGHT IS 48 INCHES (48 INCHES STANDARD)  
DOCKLEVELER CAPACITY (GROSS ROLLING LOAD) IS 40,000 LBS.  
VERTICAL SERVICE RANGE IS 12 INCHES ABOVE AND 12 INCHES BELOW DOCK  
INCLUDES (2) 1014-4.5 LAMINATED DOCK BUMPERS  
DURABLE LIQUID PAINT BROWN FINISH WITH YELLOW DECK SIDES & TOE GUARDS  
\*\*\*SINGLE AXLE CAPACITY NOT TO EXCEED 70% OF LOAD\*\*\*

ALL STRUCTURAL STEEL CONSTRUCTION WELDING MEETS AWS.  
DESIGN, ENGINEERING, AND FABRICATION  
COMPLIES WITH OSHA & ANSI MH30.1

-REFER TO THE UNIT'S ELECTRICAL DIAGRAM FOR ELECTRICAL SERVICE REQUIREMENTS.

-INSTALL TO MEET ALL APPLICABLE STATE & LOCAL CODES FOR YOUR AREA!

-NOTE: REFER TO THE APPROPRIATE ELECTRICAL CIRCUIT DIAGRAM (FOUND IN THE OWNER'S MANUAL) FOR REQUIRED WIRING TO COMPLETE INSTALLATION (SOME WIRING TO BE SUPPLIED BY OTHERS.)

## SPECIAL FEATURES

NONE

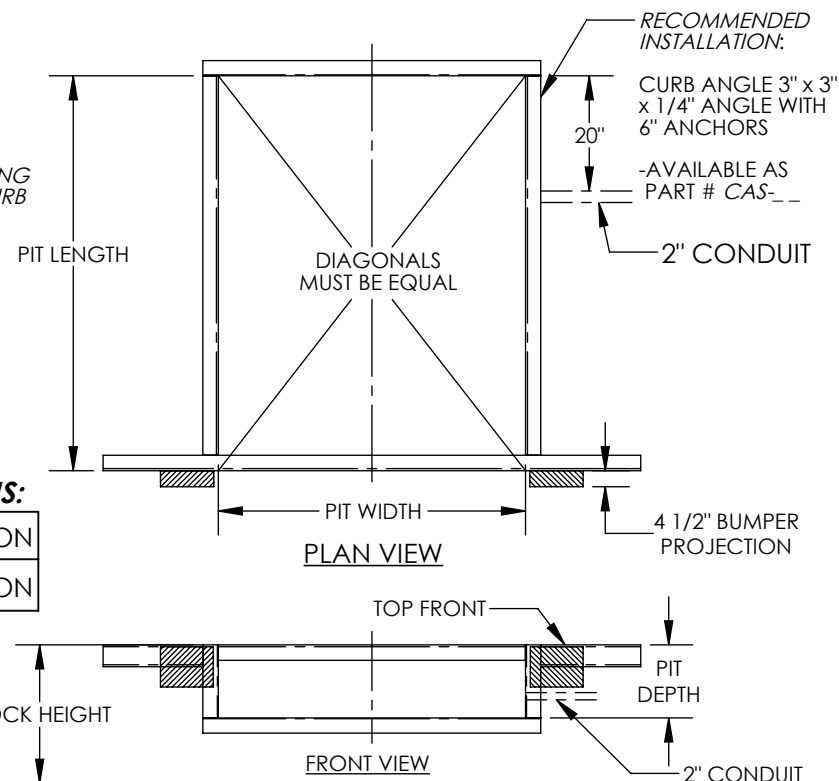
### PLEASE CIRCLE SPECIFICATIONS:

|          |                    |
|----------|--------------------|
| NEW      | (PIT) CONSTRUCTION |
| EXISTING | (PIT) CONSTRUCTION |

### PLEASE CIRCLE SPECIFICATIONS:

|                                      |        |          |           |
|--------------------------------------|--------|----------|-----------|
| POWER                                | AC     | * DC     | * AIR/OIL |
| MOTOR VOLTAGE                        | 115    | 208      | 230 460   |
| DEDICATED CIRCUIT REQUIRED           |        |          |           |
| MOTOR PHASE                          | SINGLE | THREE    |           |
| CONTROL                              | HAND   | * FOOT   |           |
| ~ ALL BATTERY CHARGERS ARE 115V AC ~ |        |          |           |
| * BATTERY CHRG.                      | REMOTE | ON-BOARD |           |
| * CHRG. INDICATOR                    | YES    | NO       |           |

\* AVAILABLE AT ADDITIONAL COST



SEE DRAWING NUMBERS EH-1 THRU EH-4 FOR MORE INSTALLATION INFO

APPROVAL

I, THE UNDERSIGNED, AGREE THAT THE PRODUCT AS REPRESENTED SATISFIES DESIGN AND DIMENSION REQUIREMENTS. I ALSO ACKNOWLEDGE MY DUTY TO CONFIRM PRODUCT AND INSTALLATION COMPLIANCE WITH ALL APPLICABLE FEDERAL, STATE AND LOCAL REGULATIONS AND STANDARDS.  
**UNITS REQUIRING APPROVAL DRAWINGS OR MODIFIED ARE NON-RETURNABLE**  
[ ] As drawn [ ] As marked

Signed: \_\_\_\_\_ Date: \_\_\_\_\_

Printed Name: \_\_\_\_\_

LEAD TIME WILL START UPON RECEIPT OF SIGNED APPROVAL DRAWING

|                      |            |            |
|----------------------|------------|------------|
| DISTRIBUTOR'S NAME:  |            | P.O.#      |
| VESTIL MANUFACTURING |            | X          |
| DRAWN BY: TJM        |            | W.O.#      |
| DATE: 07/15/11       |            | X          |
| REFERENCE: X         | SCALE: NTS | SALES: X   |
| QUOTED LEAD TIME: X  | QUOTE # X  | FILE NAME: |
|                      |            | 06-007-051 |

DIMENSION TOLERANCE  $\pm 1/4"$