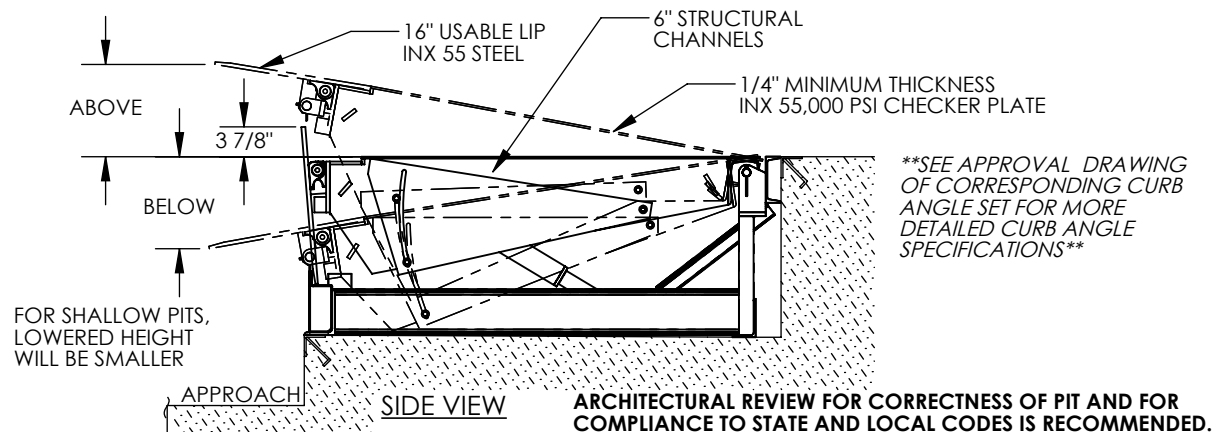


# ELECTRIC HYDRAULIC DOCKLEVELER WITH ROLLOFF GUARD OPTION: EH-\_\_\_\_, EH-ROG

\*\*\* ANY ADDITIONS, DELETIONS, OR OMISSIONS MUST BE CORRECTED ON THIS DRAWING AS THIS DRAWING WILL BE CONSIDERED ALL INCLUSIVE \*\*\*

ALL GRAPHICS PROVIDED ARE FOR REFERENCE ONLY. IF CERTAIN DIMENSIONS ARE CRITICAL PLEASE VERIFY THOSE DIMENSIONS WITH YOUR SALESPERSON



## STANDARD FEATURES

DOCKLEVELER MODEL NUMBER: \_\_\_\_

PIT WIDTH IS \_\_\_\_ INCHES

PIT LENGTH IS \_\_\_\_ INCHES

PIT DEPTH IS \_\_\_\_ INCHES AT FRONT, \_\_\_\_ INCHES AT BACK

DOCK HEIGHT IS 48 INCHES (48 INCHES STANDARD)

DOCKLEVELER CAPACITY (GROSS ROLLING LOAD) IS \_\_\_\_ LBS.

VERTICAL SERVICE RANGE IS 12 INCHES ABOVE AND \_\_\_\_ INCHES BELOW DOCK

INCLUDES (2) 1014-4.5 LAMINATED DOCK BUMPERS

DURABLE LIQUID PAINT BROWN FINISH WITH YELLOW DECK SIDES & TOE GUARDS

\*\*\*SINGLE AXLE CAPACITY NOT TO EXCEED 70% OF LOAD\*\*\*

ALL STRUCTURAL STEEL CONSTRUCTION WELDING MEETS AWS.  
DESIGN, ENGINEERING, AND FABRICATION  
COMPLIES WITH OSHA & ANSI MH30.1

-REFER TO THE UNIT'S ELECTRICAL DIAGRAM FOR ELECTRICAL  
SERVICE REQUIREMENTS.

-INSTALL TO MEET ALL APPLICABLE STATE & LOCAL CODES FOR  
YOUR AREA!

-NOTE: ONE 18/2 STD AND 14/3 (FOR 1 PHASE) OR  
14/4 (FOR 3 PHASE) STD CABLE (OR EQUIVALENT)  
MUST BE PROVIDED BY THE INSTALLER IN ORDER  
TO COMPLETE THE INSTALLATION.

## SPECIAL FEATURES

\*EH-ROG: ROLLOFF GUARD OPTION,  
LIP EXTENDS 3 7/8" ABOVE DECK

NOTE: WHILE THE EH-ROG OPTION WILL ENHANCE  
THE SAFETY OF YOUR LOADING DOCK AREA, IT IS  
DESIGNED TO FUNCTION PRIMARILY AS A ROLL OFF  
GUARD; IT IS NOT RATED TO WITHSTAND ENERGETIC  
IMPACTS, PARTICULARLY FROM VEHICLES OR FORKTRUCKS

## PLEASE CIRCLE SPECIFICATIONS:

NEW (PIT) CONSTRUCTION

EXISTING (PIT) CONSTRUCTION

FOR INTERNAL USE ONLY  
PROJECT SIGN OFF

SALES	
ENG.	
FAB.	
POWER	

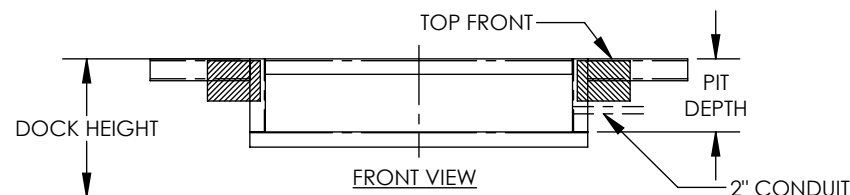
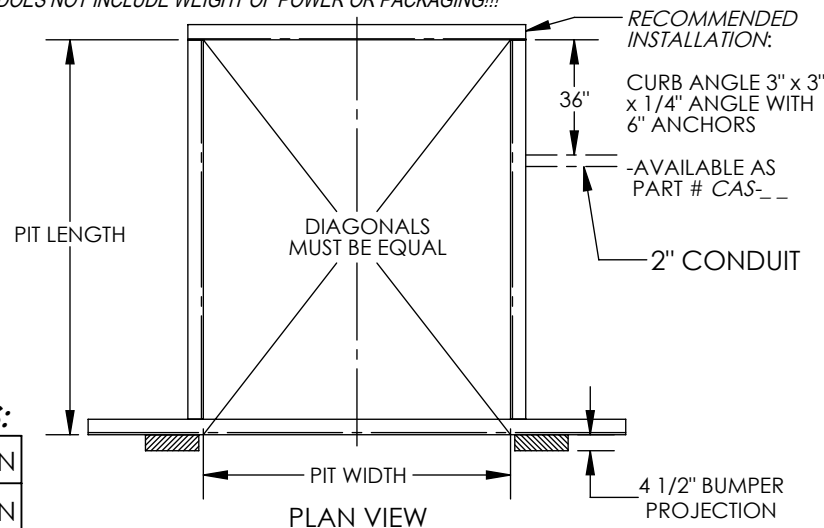
## PLEASE CIRCLE SPECIFICATIONS:

POWER	AC	* DC	* AIR/OIL
MOTOR VOLTAGE	115	208	230 460
DEDICATED CIRCUIT REQUIRED			
MOTOR PHASE	SINGLE	THREE	
CONTROL	HAND	* FOOT	
~ ALL BATTERY CHARGERS ARE 115V AC ~			
* BATTERY CHRG.	REMOTE	ON-BOARD	
* CHRG. INDICATOR	YES	NO	

\* AVAILABLE AT ADDITIONAL COST

APPROX WEIGHT: \_\_\_\_ lbs.

DOES NOT INCLUDE WEIGHT OF POWER OR PACKAGING!!!



SEE DRAWING NUMBERS EH-1 THRU EH-4 FOR MORE INSTALLATION INFO

DIMENSION TOLERANCE  $\pm 1/4"$

APPROVAL

I, THE UNDERSIGNED, AGREE THAT THE PRODUCT AS  
REPRESENTED SATISFIES DESIGN AND DIMENSION  
REQUIREMENTS. I ALSO ACKNOWLEDGE MY DUTY TO  
CONFIRM PRODUCT AND INSTALLATION  
COMPLIANCE WITH ALL APPLICABLE FEDERAL, STATE  
AND LOCAL REGULATIONS AND STANDARDS.

**ANY MODIFIED UNITS ARE NON-RETURNABLE**

[ ] As drawn [ ] As marked

Signed: \_\_\_\_\_ Date: \_\_\_\_\_

Printed Name: \_\_\_\_\_

LEAD TIME WILL START UPON RECEIPT OF SIGNED APPROVAL DRAWING

DISTRIBUTOR'S NAME:

VESTIL MANUFACTURING

DRAWN BY: TJM

DATE: 08/06/2020

REFERENCE: X

SCALE: NTS

QUOTED LEAD TIME: X

QUOTE # X

P.O.# X

W.O.# X

SALES: X

FILE NAME:

06-007-079