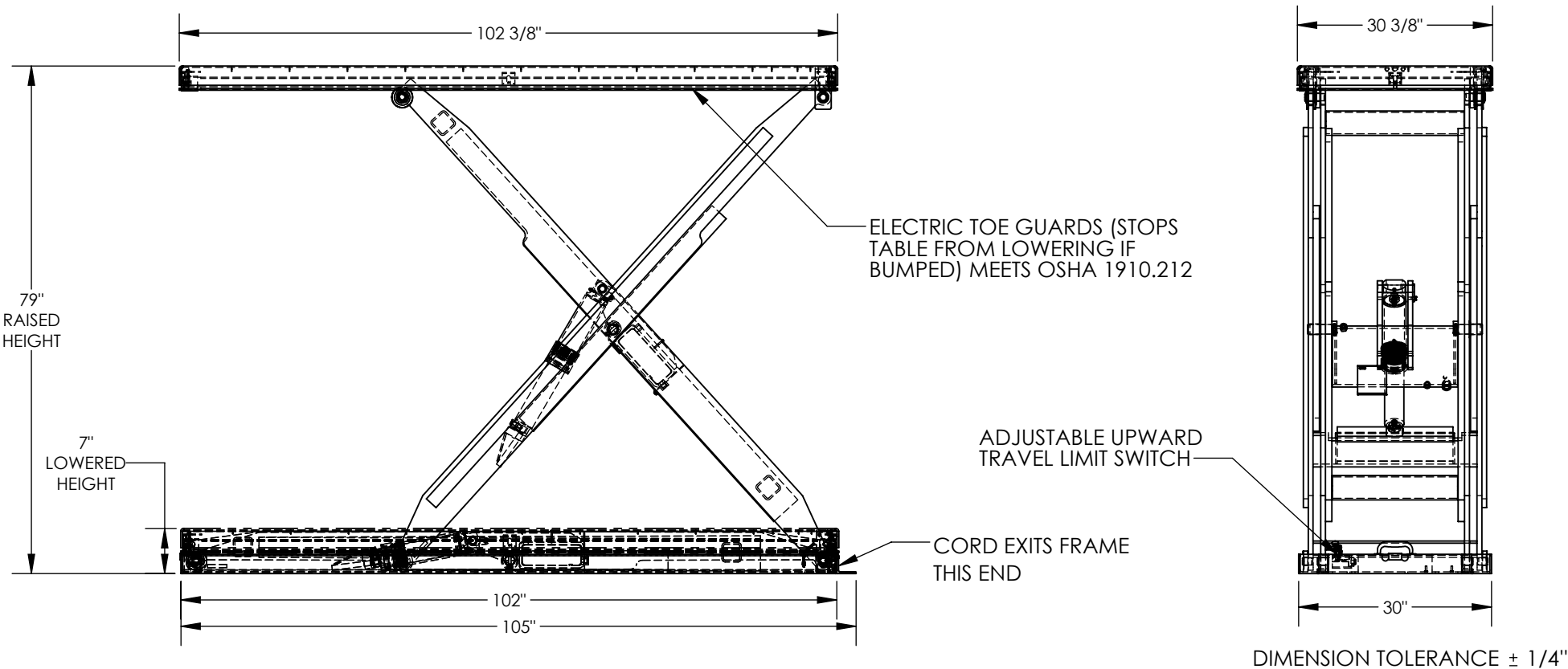


# ELECTRIC HYDRAULIC SCISSOR LIFT TABLE - EHLT-30102-1-79

APPROX WEIGHT: 1501.60 lbs.  
DOES NOT INCLUDE WEIGHT OF POWER OR PACKAGING!!!

\*\*\* ANY ADDITIONS, DELETIONS, OR OMISSIONS MUST BE CORRECTED ON THIS DRAWING AS THIS DRAWING WILL BE CONSIDERED ALL INCLUSIVE \*\*\*  
ALL GRAPHICS PROVIDED ARE FOR REFERENCE ONLY. IF CERTAIN DIMENSIONS ARE CRITICAL PLEASE VERIFY THOSE DIMENSIONS WITH YOUR SALESPERSON



## STANDARD FEATURES

MODEL NUMBER IS EHLT-30102-1-79  
PLATFORM WIDTH IS 30 3/8"  
PLATFORM LENGTH IS 102 3/8"  
PLATFORM RAISED HEIGHT IS 79"  
PLATFORM LOWERED HEIGHT IS 7"  
TABLE CAPACITY (EVENLY DISTRIBUTED)  
LOAD IS 1,000 LBS  
INTERNAL POWER UNIT  
STANDARD CONTROL IS 24 VOLT  
CONTROL IS HANDHELD, 2 BUTTON, NEMA 4  
PENDANT WITH MINIMUM 8' USABLE COIL CORD  
SAFETY MAINTENANCE PROPS, DISPLACEMENT  
STYLE CYLINDERS INSTALLED ROD DOWN  
EMERGENCY SAFETY STOP HYDRAULIC FUSES  
IN ALL CYLINDERS UNITS HAVE 2' TEST LEAD AND  
PIG TAIL  
DURABLE LIQUID PAINT BLUE FINISH

## SPECIAL FEATURES

NONE

| POWER                           | AC | <del>DC (12V)</del> |     |                 |     | AIR/OIL |
|---------------------------------|----|---------------------|-----|-----------------|-----|---------|
| MOTOR VOLTAGE                   |    | 115                 | 208 | 230             | 460 |         |
| DEDICATED CIRCUIT REQUIRED 60Hz |    |                     |     |                 |     |         |
| MOTOR PHASE                     |    | <del>SINGLE</del>   |     | THREE           |     |         |
| CONTROL                         |    | HAND                |     | <del>FOOT</del> |     |         |

DECK TOLERANCE ± 1/2"  
TABLE HEIGHT TOLERANCE ± 1/2"  
DECK FLATNESS ± 1/4"

APPROVAL

I, THE UNDERSIGNED, AGREE THAT THE PRODUCT AS REPRESENTED SATISFIES DESIGN AND DIMENSION REQUIREMENTS. I ALSO ACKNOWLEDGE MY DUTY TO CONFIRM PRODUCT AND INSTALLATION COMPLIANCE WITH ALL APPLICABLE FEDERAL, STATE AND LOCAL REGULATIONS AND STANDARDS.  
**UNITS REQUIRING APPROVAL DRAWINGS OR MODIFIED ARE NON-RETURNABLE**  
[ ] As drawn [ ] As marked

Signed: \_\_\_\_\_ Date: \_\_\_\_\_

Printed Name: \_\_\_\_\_

LEAD TIME WILL START UPON RECEIPT OF SIGNED APPROVAL DRAWING

|                      |             |                |
|----------------------|-------------|----------------|
| DISTRIBUTOR'S NAME:  |             | P.O.#          |
| VESTIL MANUFACTURING |             | X              |
| DRAWN BY: BCN        |             | W.O.#          |
| DATE: 10/11/2017     |             | X              |
| REFERENCE: X         | SCALE: 1:24 | SALES: X       |
| QUOTED LEAD TIME: X  | QUOTE # X   | FILE NAME:     |
|                      |             | 24-007-411-001 |