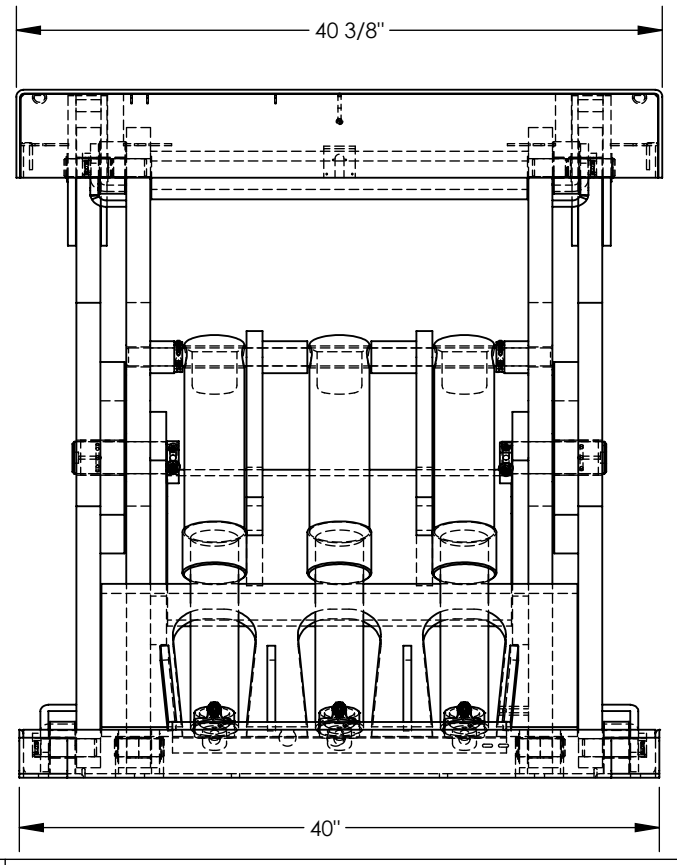
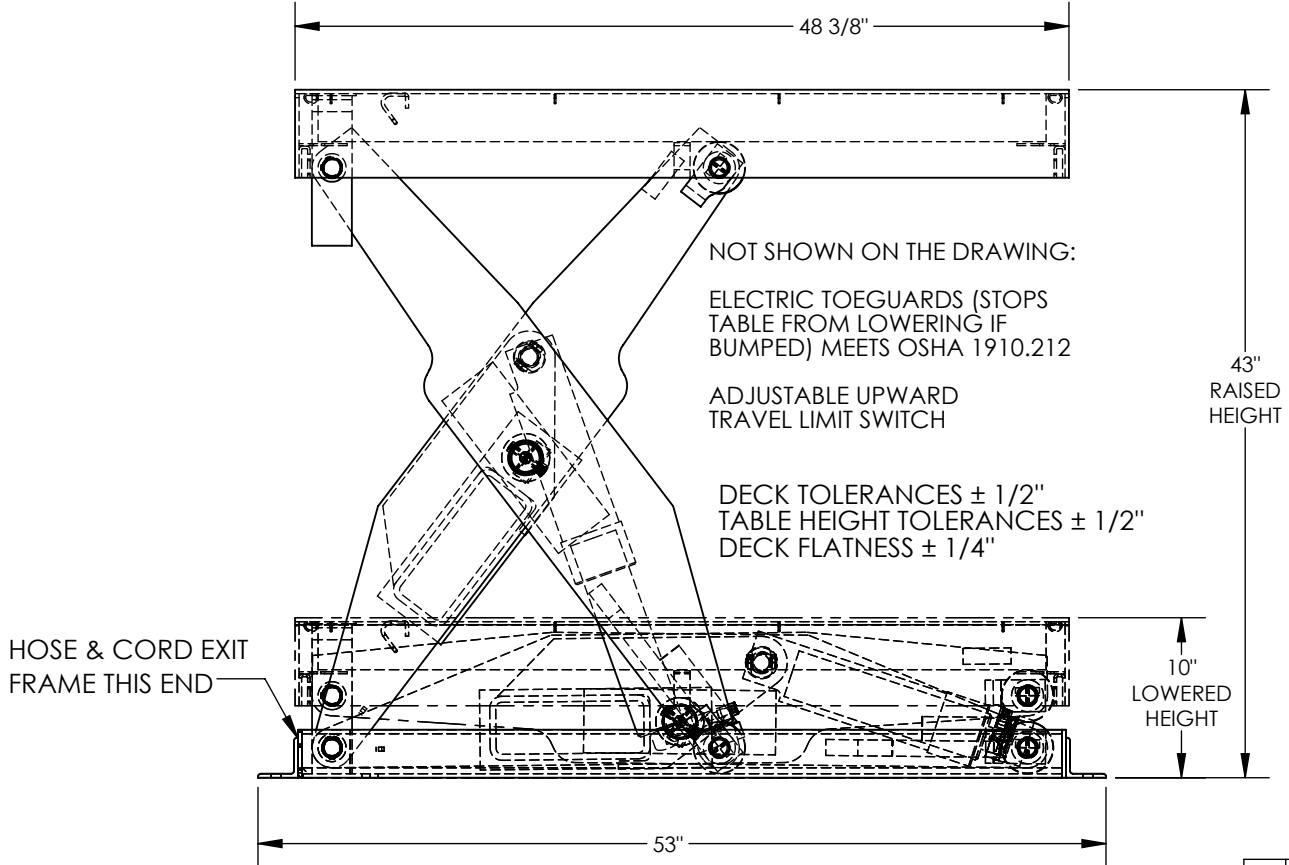


APPROX WEIGHT: 1387.03 lbs.  
DOES NOT INCLUDE WEIGHT OF POWER OR PACKAGING!!!

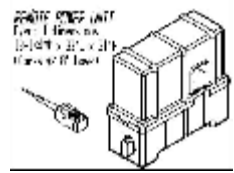
ELECTRIC HYDRAULIC SCISSOR LIFT TABLE - EHLT-4048-10-43

\*\*\* ANY ADDITIONS, DELETIONS, OR OMISSIONS MUST BE CORRECTED ON THIS DRAWING AS THIS DRAWING WILL BE CONSIDERED ALL INCLUSIVE \*\*\*  
ALL GRAPHICS PROVIDED ARE FOR REFERENCE ONLY. IF CERTAIN DIMENSIONS ARE CRITICAL PLEASE VERIFY THOSE DIMENSIONS WITH YOUR SALESPERSON



STANDARD FEATURES

MODEL NUMBER IS EHLT-4048-10-43  
PLATFORM WIDTH IS 40 3/8"  
PLATFORM LENGTH IS 48 3/8"  
PLATFORM RAISED HEIGHT IS 43"  
PLATFORM LOWERED HEIGHT IS 10"  
TABLE CAPACITY (EVENLY DISTRIBUTED)  
LOAD IS 10,000 LBS  
CONTROL IS HANDHELD, 2 BUTTON, NEMA 4  
PENDANT WITH 4'-20' CORD  
SAFETY MAINTENANCE PROPS, DISPLACEMENT  
STYLE CYLINDERS INSTALLED ROD DOWN  
EMERGENCY SAFETY STOP HYDRAULIC FUSES  
IN ALL CYLINDER  
UNITS HAVE 2' TEST LEAD AND PIG TAIL  
EXTERNAL POWER UNIT  
DURABLE LIQUID PAINT BLUE FINISH



SPECIAL FEATURES

NONE

PLEASE CIRCLE SPECIFICATIONS:

POWER	AC	<del>DC (12V)</del>	AIR/OIL
MOTOR VOLTAGE	115	208	230 460
DEDICATED CIRCUIT REQUIRED 60Hz			
MOTOR PHASE	SINGLE	THREE	
CONTROL	HAND	FOOT	

DIMENSION TOLERANCE  $\pm 1/4"$

**A P P R O V A L**

I, THE UNDERSIGNED, AGREE THAT THE PRODUCT AS REPRESENTED SATISFIES DESIGN AND DIMENSION REQUIREMENTS. I ALSO ACKNOWLEDGE MY DUTY TO CONFIRM PRODUCT AND INSTALLATION COMPLIANCE WITH ALL APPLICABLE FEDERAL, STATE AND LOCAL REGULATIONS AND STANDARDS.

**UNITS REQUIRING APPROVAL DRAWINGS OR MODIFIED ARE NON-RETURNABLE**

[ ] As drawn [ ] As marked

Signed: \_\_\_\_\_ Date: \_\_\_\_\_

Printed Name: \_\_\_\_\_

LEAD TIME WILL START UPON RECEIPT OF SIGNED APPROVAL DRAWING

DISTRIBUTOR'S NAME:		P.O.# X
VESTIL MANUFACTURING		W.O.# X
DRAWN BY: DLS	DATE: 11/6/2014	SALES: X
REFERENCE: X	SCALE: 1:12	FILE NAME:
QUOTED LEAD TIME: X	QUOTE # X	25-007-110