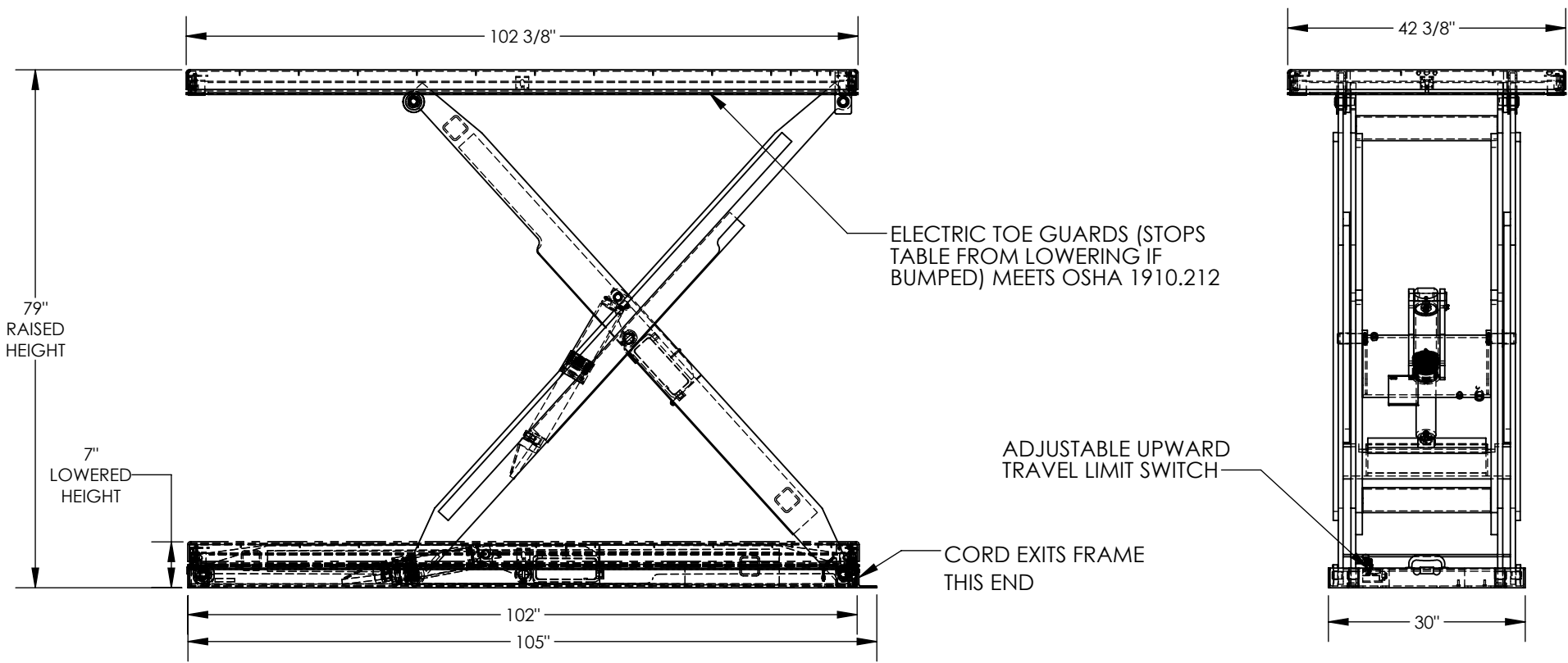


APPROX WEIGHT: 1593.97 lbs.
DOES NOT INCLUDE WEIGHT OF POWER OR PACKAGING!!!

ELECTRIC HYDRAULIC SCISSOR LIFT TABLE - EHLT-42102-1-79

*** ANY ADDITIONS, DELETIONS, OR OMISSIONS MUST BE CORRECTED ON THIS DRAWING AS THIS DRAWING WILL BE CONSIDERED ALL INCLUSIVE ***
ALL GRAPHICS PROVIDED ARE FOR REFERENCE ONLY. IF CERTAIN DIMENSIONS ARE CRITICAL PLEASE VERIFY THOSE DIMENSIONS WITH YOUR SALESPERSON



STANDARD FEATURES

MODEL NUMBER IS EHLT-42102-1-79
PLATFORM WIDTH IS 42 3/8"
PLATFORM LENGTH IS 102 3/8"
PLATFORM RAISED HEIGHT IS 79"
PLATFORM LOWERED HEIGHT IS 7"
TABLE CAPACITY (EVENLY DISTRIBUTED)
LOAD IS 1,000 LBS
INTERNAL POWER UNIT
STANDARD CONTROL IS 24 VOLT
CONTROL IS HANDHELD, 2 BUTTON, NEMA 4
PENDANT WITH MINIMUM 8' USABLE COIL CORD
SAFETY MAINTENANCE PROPS, DISPLACEMENT
STYLE CYLINDERS INSTALLED ROD DOWN
EMERGENCY SAFETY STOP HYDRAULIC FUSES
IN ALL CYLINDERS UNITS HAVE 2' TEST LEAD AND
PIG TAIL
DURABLE LIQUID PAINT BLUE FINISH

SPECIAL FEATURES

NONE

POWER	AC	DC (12V)				AIR/OIL
MOTOR VOLTAGE		115	208	230	460	
DEDICATED CIRCUIT REQUIRED 60Hz						
MOTOR PHASE		SINGLE		THREE		
CONTROL		HAND		FOOT		

DECK TOLERANCE ± 1/2"
TABLE HEIGHT TOLERANCE ± 1/2"
DECK FLATNESS ± 1/4"

APPROVAL	I, THE UNDERSIGNED, AGREE THAT THE PRODUCT AS REPRESENTED SATISFIES DESIGN AND DIMENSION REQUIREMENTS. I ALSO ACKNOWLEDGE MY DUTY TO CONFIRM PRODUCT AND INSTALLATION COMPLIANCE WITH ALL APPLICABLE FEDERAL, STATE AND LOCAL REGULATIONS AND STANDARDS.		
	UNITS REQUIRING APPROVAL DRAWINGS OR MODIFIED ARE NON-RETURNABLE		
	[] As drawn [] As marked		
	Signed: _____		Date: _____
	Printed Name: _____		
LEAD TIME WILL START UPON RECEIPT OF SIGNED APPROVAL DRAWING			
DISTRIBUTOR'S NAME: VESTIL MANUFACTURING			P.O.# X
DRAWN BY: BCN			W.O.# X
DATE: 10/11/2017			SALES: X
REFERENCE: X			SCALE: 1:24
QUOTED LEAD TIME: X			FILE NAME: 24-007-411-002
QUOTE # X			