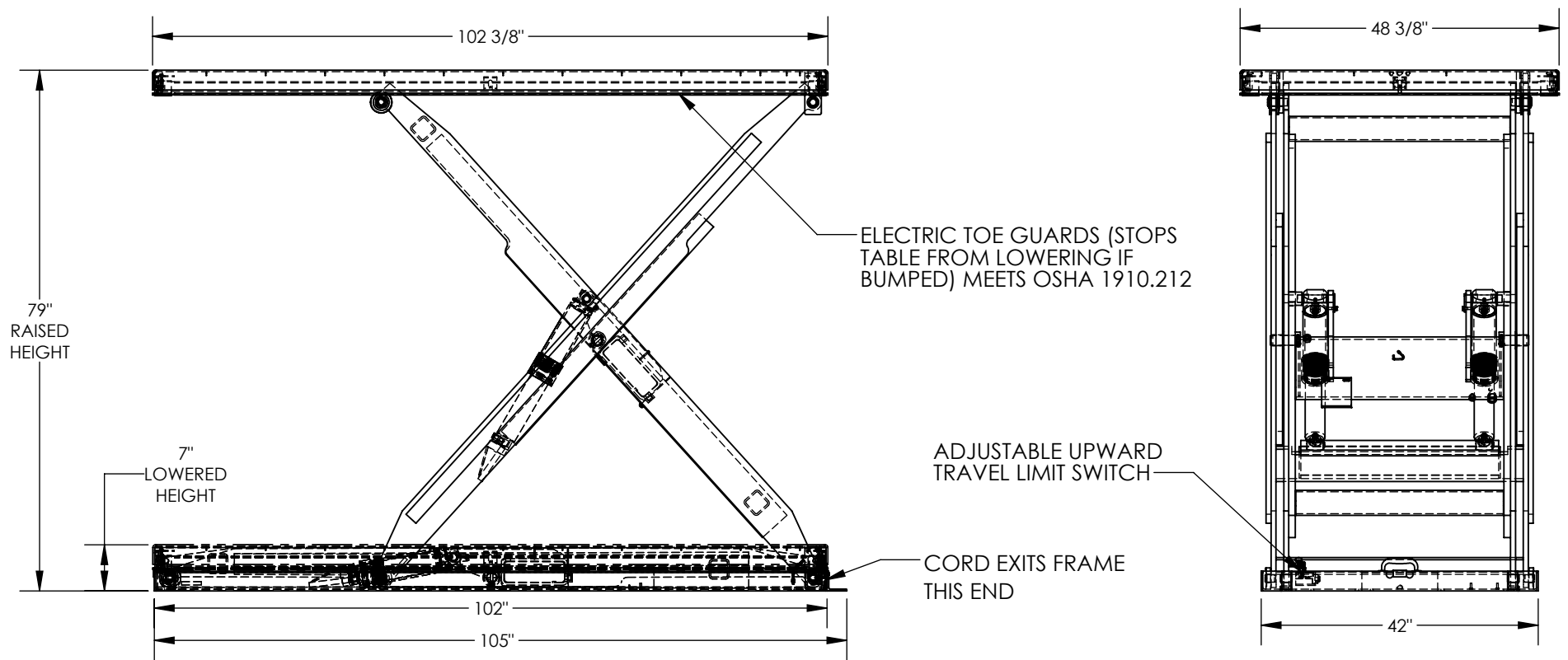


APPROX WEIGHT: 1781.98 lbs.
DOES NOT INCLUDE WEIGHT OF POWER OR PACKAGING!!!

ELECTRIC HYDRAULIC SCISSOR LIFT TABLE - EHLT-48102-2-79

*** ANY ADDITIONS, DELETIONS, OR OMISSIONS MUST BE CORRECTED ON THIS DRAWING AS THIS DRAWING WILL BE CONSIDERED ALL INCLUSIVE ***
ALL GRAPHICS PROVIDED ARE FOR REFERENCE ONLY. IF CERTAIN DIMENSIONS ARE CRITICAL PLEASE VERIFY THOSE DIMENSIONS WITH YOUR SALESPERSON



STANDARD FEATURES

MODEL NUMBER IS EHLT-48102-2-79
PLATFORM WIDTH IS 48 3/8"
PLATFORM LENGTH IS 102 3/8"
PLATFORM RAISED HEIGHT IS 79"
PLATFORM LOWERED HEIGHT IS 7"
TABLE CAPACITY (EVENLY DISTRIBUTED)
LOAD IS 2,000 LBS
INTERNAL POWER UNIT
STANDARD CONTROL IS 24 VOLT
CONTROL IS HANDHELD, 2 BUTTON, NEMA 4
PENDANT WITH MINIMUM 8' USABLE COIL CORD
SAFETY MAINTENANCE PROPS, DISPLACEMENT
STYLE CYLINDERS INSTALLED ROD DOWN
EMERGENCY SAFETY STOP HYDRAULIC FUSES
IN ALL CYLINDERS UNITS HAVE 2' TEST LEAD AND
PIG TAIL
DURABLE LIQUID PAINT BLUE FINISH

SPECIAL FEATURES

NONE

DECK TOLERANCE ± 1/2"
TABLE HEIGHT TOLERANCE ± 1/2"
DECK FLATNESS ± 1/4"

POWER	AC	DC (12V) AIR/OIL			
MOTOR VOLTAGE		115	208	230	460
DEDICATED CIRCUIT REQUIRED 60Hz					
MOTOR PHASE		SINGLE		THREE	
CONTROL		HAND		FOOT	

APPROVAL

I, THE UNDERSIGNED, AGREE THAT THE PRODUCT AS REPRESENTED SATISFIES DESIGN AND DIMENSION REQUIREMENTS. I ALSO ACKNOWLEDGE MY DUTY TO CONFIRM PRODUCT AND INSTALLATION COMPLIANCE WITH ALL APPLICABLE FEDERAL, STATE AND LOCAL REGULATIONS AND STANDARDS.
UNITS REQUIRING APPROVAL DRAWINGS OR MODIFIED ARE NON-RETURNABLE
[] As drawn [] As marked
Signed: _____ Date: _____
Printed Name: _____
LEAD TIME WILL START UPON RECEIPT OF SIGNED APPROVAL DRAWING

DISTRIBUTOR'S NAME:		P.O.# X	
VESTIL MANUFACTURING		W.O.# X	
DRAWN BY: BCN	DATE: 10/11/2017	SALES: X	
REFERENCE: X	SCALE: 1:24	FILE NAME:	
QUOTED LEAD TIME: X	QUOTE # X	24-007-451-002	