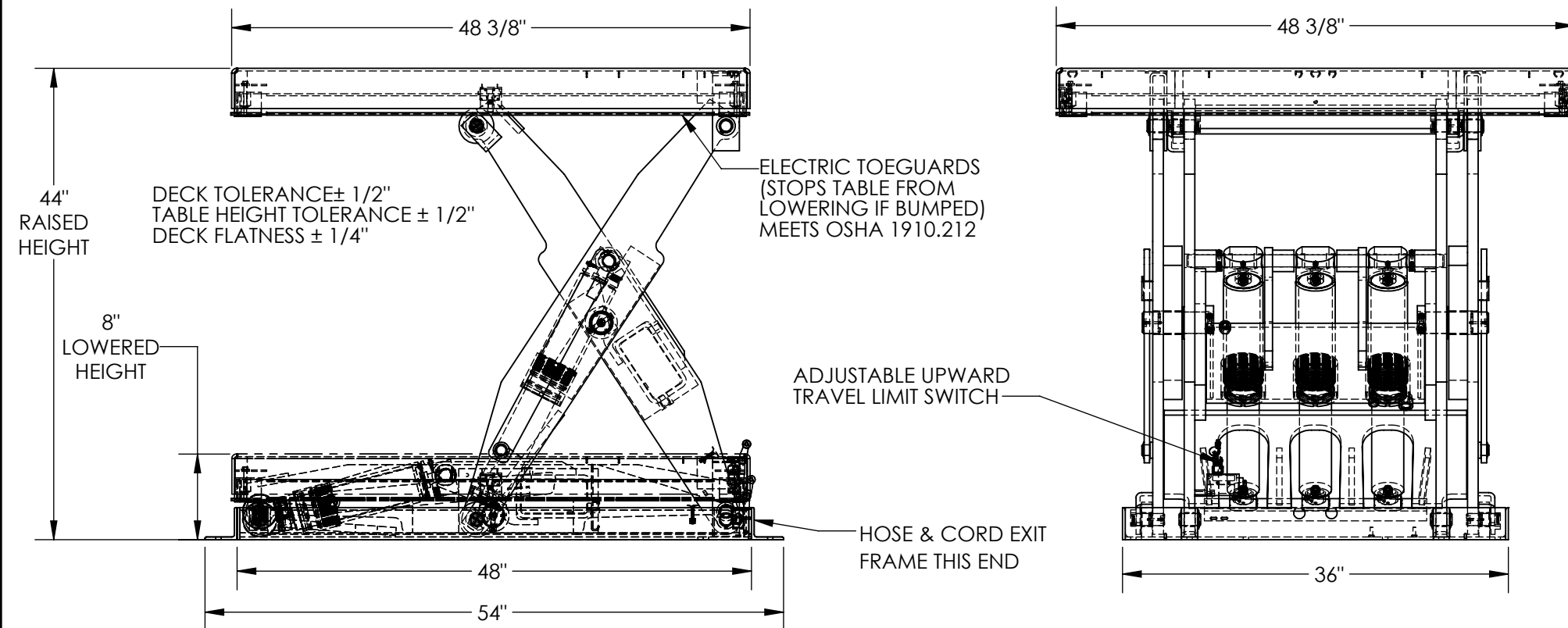


ELECTRIC HYDRAULIC SCISSOR TABLE - EHLT-4848-8-44

APPROX WEIGHT: 1056.10 lbs.
DOES NOT INCLUDE WEIGHT OF POWER OR PACKAGING!!!

*** ANY ADDITIONS, DELETIONS, OR OMISSIONS MUST BE CORRECTED ON THIS DRAWING AS THIS DRAWING WILL BE CONSIDERED ALL INCLUSIVE ***

ALL GRAPHICS PROVIDED ARE FOR REFERENCE ONLY. IF CERTAIN DIMENSIONS ARE CRITICAL PLEASE VERIFY THOSE DIMENSIONS WITH YOUR SALESPERSON



STANDARD FEATURES

MODEL NUMBER IS EHLT-4848-8-44
PLATFORM LENGTH IS 48 3/8"
PLATFORM WIDTH IS 48 3/8"
PLATFORM RAISED HEIGHT IS 44"
PLATFORM LOWERED HEIGHT IS 8"
TABLE CAPACITY (EVENLY DISTRIBUTED) IS 8,000 LBS
CONTROL IS HANDHELD, 2 BUTTON, NEMA 4
PENDANT WITH MINIMUM 8' USABLE COIL CORD
SAFETY MAINTENANCE PROPS,
DISPLACEMENT STYLE CYLINDERS INSTALLED
ROD DOWN
EMERGENCY SAFETY STOP HYDRAULIC FUSES
IN ALL CYLINDERS
UNITS HAVE 2' TEST LEAD AND PIG TAIL
EXTERNAL POWER UNIT
DURABLE LIQUID PAINT BLUE FINISH

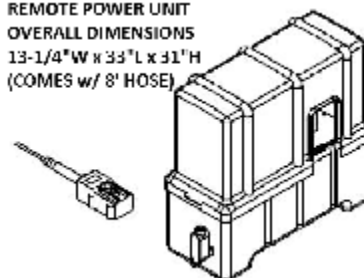
SPECIAL FEATURES

NONE

PLEASE CIRCLE SPECIFICATIONS:

POWER	AC	DC (12V)	AIR/OIL
MOTOR VOLTAGE	115	208	230 480
DEDICATED CIRCUIT REQUIRED 60Hz			
MOTOR PHASE	SINGLE	THREE	
CONTROL	HAND	FOOT	

REMOTE POWER UNIT
OVERALL DIMENSIONS
13-1/4"W x 33"L x 31"H
(COMES w/ 8' HOSE)



APPROVAL

I, THE UNDERSIGNED, AGREE THAT THE PRODUCT AS REPRESENTED SATISFIES DESIGN AND DIMENSION REQUIREMENTS. I ALSO ACKNOWLEDGE MY DUTY TO CONFIRM PRODUCT AND INSTALLATION COMPLIANCE WITH ALL APPLICABLE FEDERAL, STATE AND LOCAL REGULATIONS AND STANDARDS.
UNITS REQUIRING APPROVAL DRAWINGS OR MODIFIED ARE NON-RETURNABLE
[] As drawn [] As marked

Signed: _____ Date: _____

Printed Name: _____

LEAD TIME WILL START UPON RECEIPT OF SIGNED APPROVAL DRAWING

DISTRIBUTOR'S NAME:		P.O.#
VESTIL MANUFACTURING		X
W.O.#	DATE: 11/15/2017	SALES: X
FILE NAME:	SCALE: 1:18	
QUOTED LEAD TIME: X	QUOTE # X	24-007-531-002