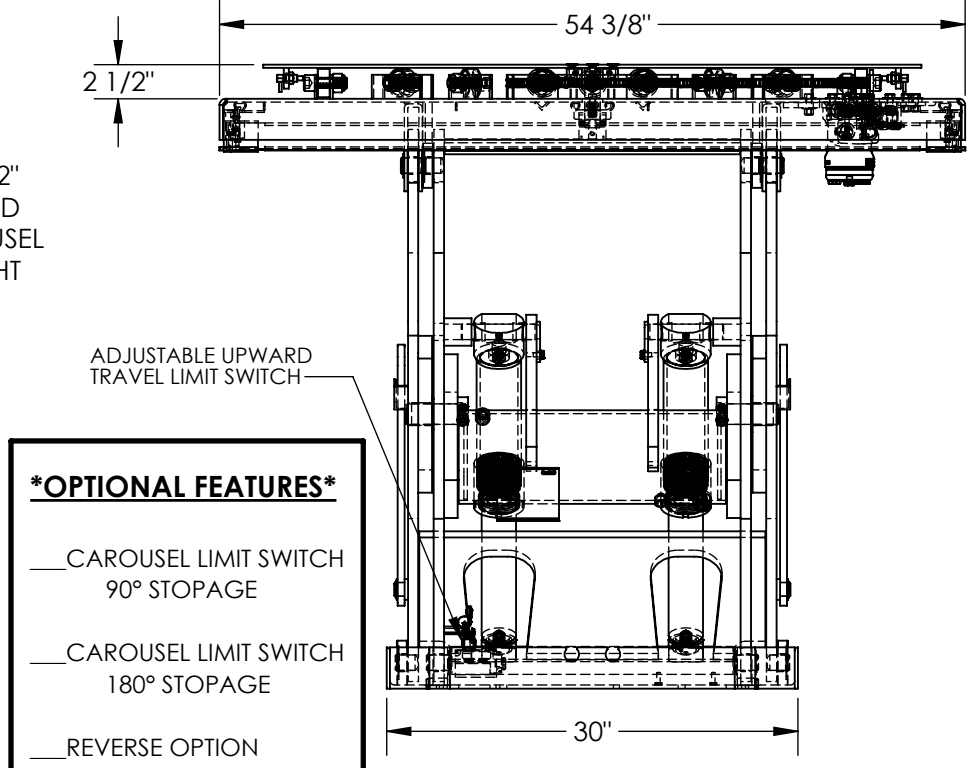
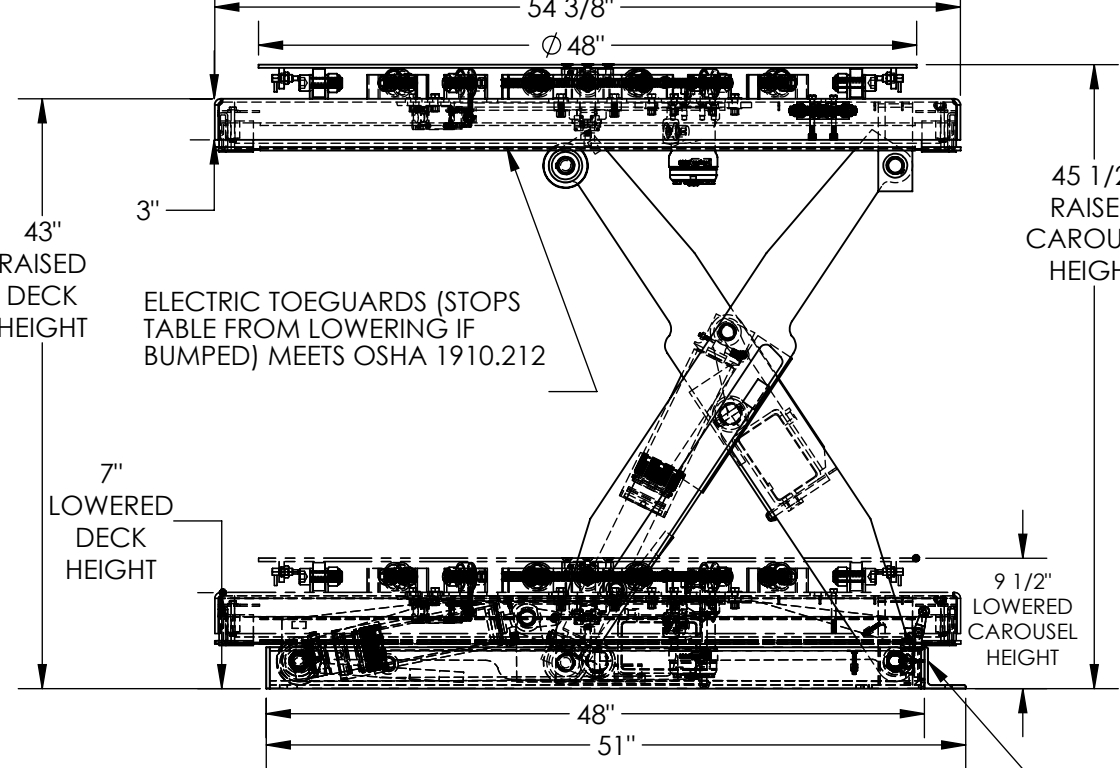


APPROX WEIGHT: 1014.74 lbs.  
DOES NOT INCLUDE WEIGHT OF POWER OR PACKAGING!!!

# ELECTRIC HYDRAULIC SCISSOR LIFT TABLE - EHLT-POWCAR

\*\*\* ANY ADDITIONS, DELETIONS, OR OMISSIONS MUST BE CORRECTED ON THIS DRAWING AS THIS DRAWING WILL BE CONSIDERED ALL INCLUSIVE \*\*\*  
ALL GRAPHICS PROVIDED ARE FOR REFERENCE ONLY. IF CERTAIN DIMENSIONS ARE CRITICAL PLEASE VERIFY THOSE DIMENSIONS WITH YOUR SALESPERSON



- \*OPTIONAL FEATURES\***
- ☐ CAROUSEL LIMIT SWITCH 90° STOPAGE
  - ☐ CAROUSEL LIMIT SWITCH 180° STOPAGE
  - ☐ REVERSE OPTION

CORD EXITS FRAME THIS END

## STANDARD FEATURES

MODEL NUMBER IS EHLT-POWCAR  
\*SHOWN ON AND DIMENSIONS REFERENCING EHLT-5454-4-43-POWCAR  
\*PLATFORM WIDTH IS 54 3/8"  
\*PLATFORM LENGTH IS 54 3/8"  
FRAME LENGTH IS 51"  
PLATFORM RAISED HEIGHT IS 43"  
CAROUSEL RAISED HEIGHT IS 45 1/2"  
PLATFORM LOWERED HEIGHT IS 7"  
CAROUSEL LOWERED HEIGHT IS 9 1/2"  
CAROUSEL DIAMETER IS Ø48"  
TABLE CAPACITY (EVENLY DISTRIBUTED) LOAD IS 3,500 LBS  
INTERNAL POWER UNIT  
CONTROL IS HANDHELD, 2 BUTTON, NEMA 4 PENDANT WITH MINIMUM 8' USABLE COIL CORD  
SAFETY MAINTENANCE PROPS, DISPLACEMENT STYLE CYLINDERS INSTALLED ROD DOWN  
EMERGENCY SAFETY STOP HYDRAULIC FUSES IN ALL CYLINDER UNITS HAVE 2' TEST LEAD AND PIG TAIL  
TABLE DURABLE LIQUID PAINT BLUE FINISH  
CAROUSEL TOUGH BAKED IN POWDER COATED YELLOW FINISH

**SPECIAL FEATURES**  
NONE

## PLEASE CIRCLE SPECIFICATIONS:

|                                 |                   |                     |         |
|---------------------------------|-------------------|---------------------|---------|
| POWER                           | AC                | <del>DC (12V)</del> | AIR/OIL |
| MOTOR VOLTAGE                   | 115               | 208                 | 230 460 |
| DEDICATED CIRCUIT REQUIRED 60Hz |                   |                     |         |
| MOTOR PHASE                     | <del>SINGLE</del> | THREE               |         |
| CONTROL                         | HAND              | <del>FOOT</del>     |         |

**APPROVAL**

I, THE UNDERSIGNED, AGREE THAT THE PRODUCT AS REPRESENTED SATISFIES DESIGN AND DIMENSION REQUIREMENTS. I ALSO ACKNOWLEDGE MY DUTY TO CONFIRM PRODUCT AND INSTALLATION COMPLIANCE WITH ALL APPLICABLE FEDERAL, STATE AND LOCAL REGULATIONS AND STANDARDS.

**UNITS REQUIRING APPROVAL DRAWINGS OR MODIFIED ARE NON-RETURNABLE**

[ ] As drawn [ ] As marked

Signed: \_\_\_\_\_ Date: \_\_\_\_\_

Printed Name: \_\_\_\_\_

LEAD TIME WILL START UPON RECEIPT OF SIGNED APPROVAL DRAWING

DISTRIBUTOR'S NAME: VESTIL MANUFACTURING

DATE: 3/27/2018

SCALE: 1:14

QUOTED LEAD TIME: X

QUOTE # X

P.O.# X

W.O.# X

SALES: X

FILE NAME: 20-007-003-001