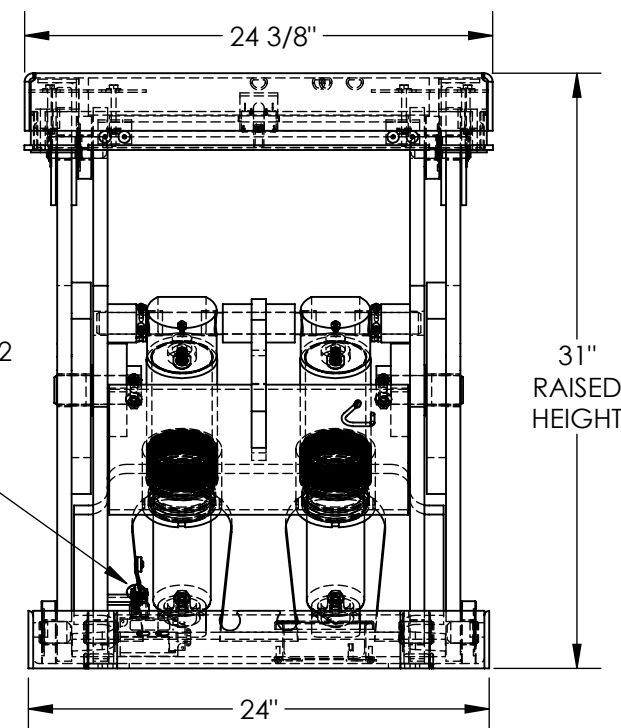
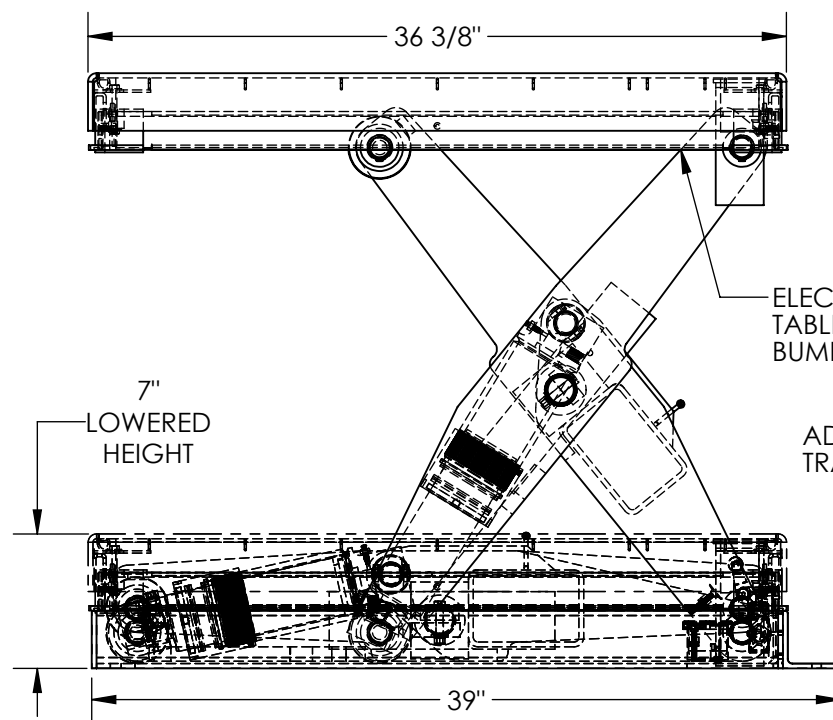


SHORTY SCISSOR LIFT TABLE - EHLTS-2436-5-31

APPROX WEIGHT: 485.26 lbs.
DOES NOT INCLUDE WEIGHT OF POWER OR PACKAGING!!!

*** ANY ADDITIONS, DELETIONS, OR OMISSIONS MUST BE CORRECTED ON THIS DRAWING AS THIS DRAWING WILL BE CONSIDERED ALL INCLUSIVE ***

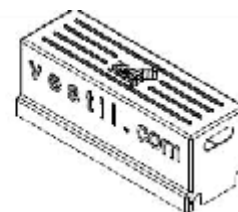
ALL GRAPHICS PROVIDED ARE FOR REFERENCE ONLY. IF CERTAIN DIMENSIONS ARE CRITICAL PLEASE VERIFY THOSE DIMENSIONS WITH YOUR SALESPERSON



STANDARD FEATURES

MODEL NUMBER IS EHLTS-2436-5-31
PLATFORM WIDTH IS: 24 3/8"
PLATFORM LENGTH IS: 36 3/8"
PLATFORM RAISED HEIGHT IS: 31"
PLATFORM LOWERED HEIGHT IS: 7"
TABLE CAPACITY (EVENLY DISTRIBUTED)
LOAD IS 5,000 LBS
STANDARD CONTROL IS 24 VOLT
WEATHERTIGHT HAND PENDANT ON 8' CORD
DISPLACEMENT STYLE CYLINDERS
INSTALLED ROD DOWN
EMERGENCY SAFETY STOP HYDRAULIC FUSES
IN ALL CYLINDERS UNITS HAVE 2' TEST LEAD AND
PIG TAIL
REMOTE POWER UNIT

REMOTE POWER UNIT
32 1/2" x 12" 12 1/2" (L x W x H)
WITH 8' HOSE & CABLE



PLEASE CIRCLE SPECIFICATIONS:

| POWER | AC | DC (12V) | AIR/OIL |
|---------------------------------|-------------------|---------------------|---------|
| MOTOR VOLTAGE | 115 | 208 | 230 460 |
| DEDICATED CIRCUIT REQUIRED 60Hz | | | |
| MOTOR PHASE | SINGLE | THREE | |
| CONTROL | HAND | FOOT | |

SPECIAL FEATURES

NONE

FOR INTERNAL USE ONLY
PROJECT SIGN OFF

| | |
|-------|--|
| SALES | |
| ENG. | |
| FAB. | |
| POWER | |

DECK TOLERANCE $\pm 1/2"$
TABLE HEIGHT TOLERANCE $\pm 1/2"$
DECK FLATNESS $\pm 1/4"$

APPROVAL

I, THE UNDERSIGNED, AGREE THAT THE PRODUCT AS REPRESENTED SATISFIES DESIGN AND DIMENSION REQUIREMENTS. I ALSO ACKNOWLEDGE MY DUTY TO CONFIRM PRODUCT AND INSTALLATION COMPLIANCE WITH ALL APPLICABLE FEDERAL, STATE AND LOCAL REGULATIONS AND STANDARDS.

ANY MODIFIED UNITS ARE NON-RETURNABLE

[] As drawn [] As marked

Signed: _____ Date: _____

Printed Name: _____

LEAD TIME WILL START UPON RECEIPT OF SIGNED APPROVAL DRAWING

DISTRIBUTOR'S NAME:

VESTIL MANUFACTURING

DRAWN BY: C.CLEMENS

DATE: 12/28/17

REFERENCE: X

SCALE: 1:10

QUOTED LEAD TIME: X

QUOTE # X

P.O.# X

W.O.# X

SALES: X

FILE NAME:

01-007-321-001