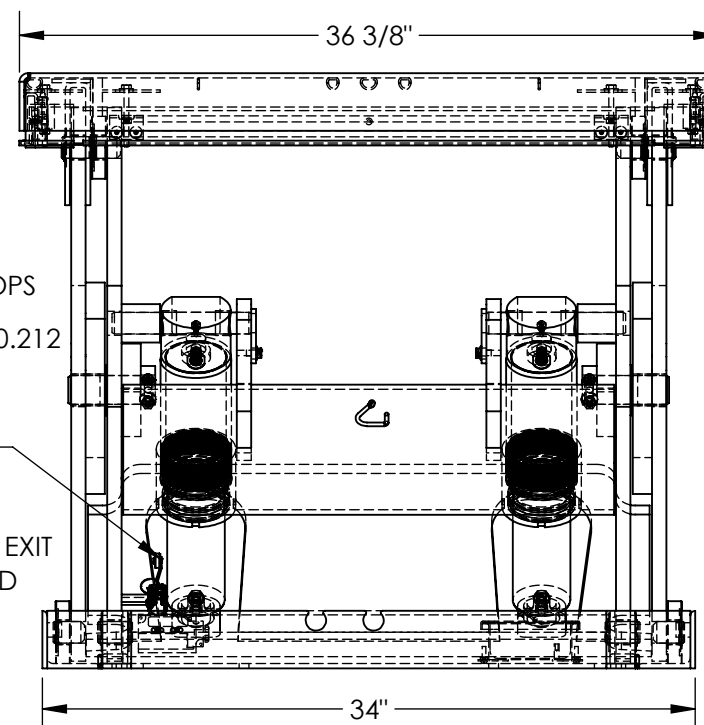
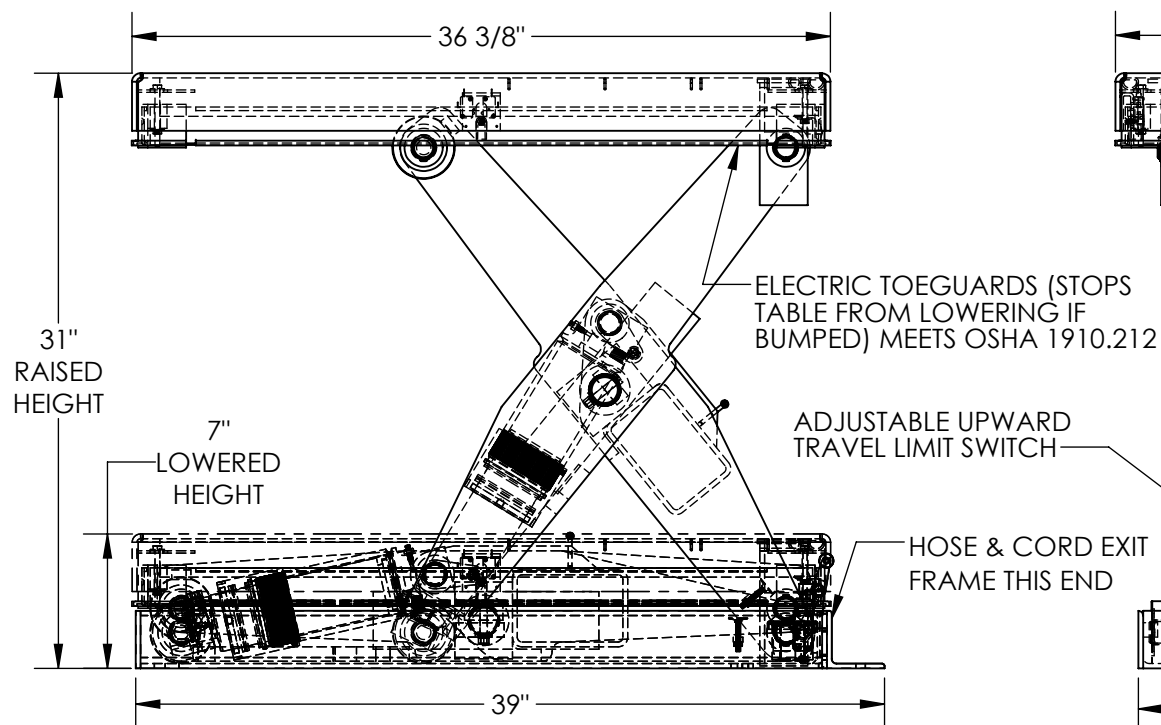


# SHORTY SCISSOR LIFT TABLE - EHLTS-3636-4-31

APPROX WEIGHT: 579.83 lbs.  
DOES NOT INCLUDE WEIGHT OF POWER OR PACKAGING!!!

\*\*\* ANY ADDITIONS, DELETIONS, OR OMISSIONS MUST BE CORRECTED ON THIS DRAWING AS THIS DRAWING WILL BE CONSIDERED ALL INCLUSIVE \*\*\*

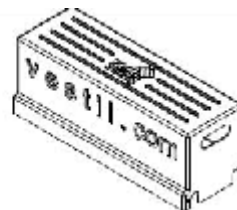
ALL GRAPHICS PROVIDED ARE FOR REFERENCE ONLY. IF CERTAIN DIMENSIONS ARE CRITICAL PLEASE VERIFY THOSE DIMENSIONS WITH YOUR SALESPERSON



## STANDARD FEATURES

MODEL NUMBER IS EHLTS-3636-4-31  
PLATFORM WIDTH IS: 36 3/8"  
PLATFORM LENGTH IS: 36 3/8"  
PLATFORM RAISED HEIGHT IS: 31"  
PLATFORM LOWERED HEIGHT IS: 7"  
TABLE CAPACITY (EVENLY DISTRIBUTED)  
LOAD IS 4,000 LBS  
STANDARD CONTROL IS 24 VOLT  
CONTROL IS HANDHELD, 2 BUTTON, NEMA 4  
PENDANT WITH MINIMUM 8' USABLE COIL CORD  
DISPLACEMENT STYLE CYLINDERS  
INSTALLED ROD DOWN  
EMERGENCY SAFETY STOP HYDRAULIC FUSES  
IN ALL CYLINDERS UNITS HAVE 2' TEST LEAD AND  
PIG TAIL  
DURABLE LIQUID PAINT BLUE FINISH  
REMOTE POWER UNIT

REMOTE POWER UNIT  
32 1/2" x 12" 12 1/2" (L x W x H)  
WITH 8' HOSE & CABLE



## PLEASE CIRCLE SPECIFICATIONS:

POWER	AC	<del>DC (12V)</del>	AIR/OIL
MOTOR VOLTAGE	<del>115</del>	<del>208</del>	<del>230</del> 460
DEDICATED CIRCUIT REQUIRED 60Hz			
MOTOR PHASE	<del>SINGLE</del>	THREE	
CONTROL	HAND	<del>FOOT</del>	

DECK TOLERANCE  $\pm 1/2"$

TABLE HEIGHT TOLERANCE  $\pm 1/2"$

DECK FLATNESS  $\pm 1/4"$

DIMENSION TOLERANCE  $\pm 1/4"$

APPROVAL

I, THE UNDERSIGNED, AGREE THAT THE PRODUCT AS REPRESENTED SATISFIES DESIGN AND DIMENSION REQUIREMENTS. I ALSO ACKNOWLEDGE MY DUTY TO CONFIRM PRODUCT AND INSTALLATION COMPLIANCE WITH ALL APPLICABLE FEDERAL, STATE AND LOCAL REGULATIONS AND STANDARDS.  
**UNITS REQUIRING APPROVAL DRAWINGS OR MODIFIED ARE NON-RETURNABLE**  
[ ] As drawn [ ] As marked

Signed: \_\_\_\_\_ Date: \_\_\_\_\_

Printed Name: \_\_\_\_\_

LEAD TIME WILL START UPON RECEIPT OF SIGNED APPROVAL DRAWING

DISTRIBUTOR'S NAME:

VESTIL MANUFACTURING

DRAWN BY:

KEC

DATE:

10/3/16

REFERENCE:

X

SCALE: 1:10

QUOTED LEAD TIME:

X

QUOTE #

X

P.O.#

X

W.O.#

X

SALES:

X

FILE NAME:

01-007-301-001

## SPECIAL FEATURES

NONE