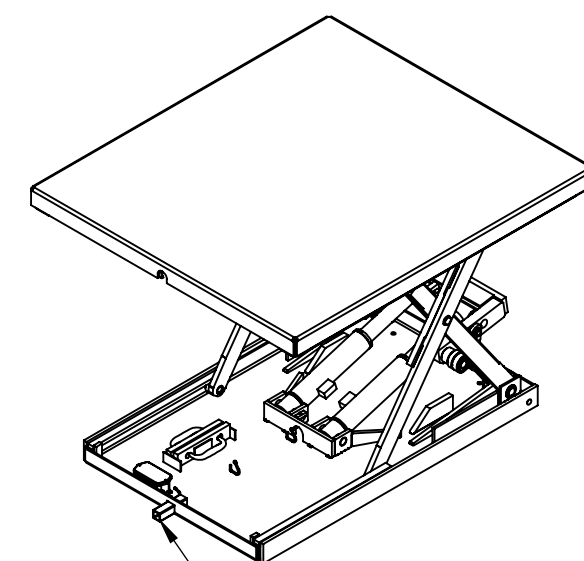
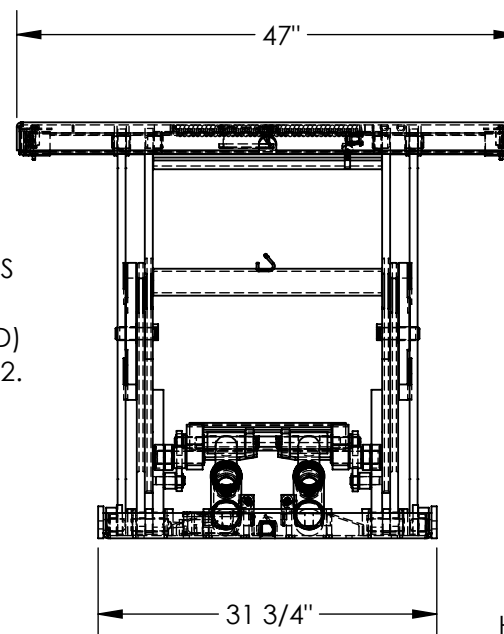
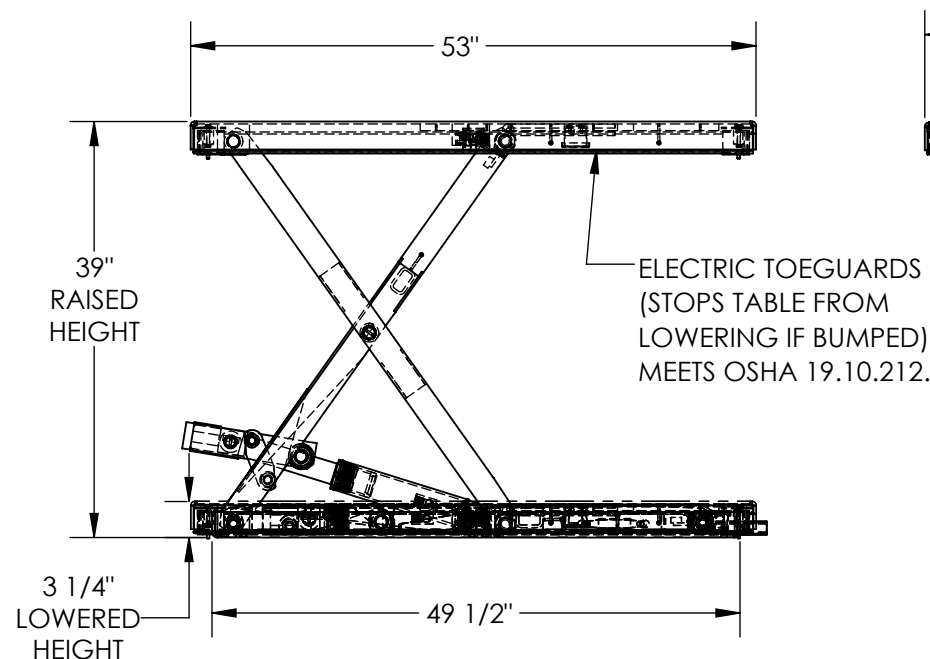


LOW PROFILE SCISSOR TABLE - EHLTX-4753-2-39

APPROX WEIGHT: 749.72 lbs.
DOES NOT INCLUDE WEIGHT OF POWER OR PACKAGING!!!

*** ANY ADDITIONS, DELETIONS, OR OMISSIONS MUST BE CORRECTED ON THIS DRAWING AS THIS DRAWING WILL BE CONSIDERED ALL INCLUSIVE ***

ALL GRAPHICS PROVIDED ARE FOR REFERENCE ONLY. IF CERTAIN DIMENSIONS ARE CRITICAL PLEASE VERIFY THOSE DIMENSIONS WITH YOUR SALESPERSON



HOSE & CORD EXIT
FRAME THIS END

REMOTE POWER UNIT
32 1/2" x 12" x 12 1/2" (L x W x H)
WITH 8' HOSE & CABLE



DIMENSION TOLERANCE $\pm 1/4"$

NOTE:

* MOST DECK ADDITIONS DERATE
THE TABLE BY AT LEAST 250 LBS

STANDARD FEATURES

MODEL NUMBER IS EHLTX-4753-2-39
PLATFORM WIDTH IS 47"
PLATFORM LENGTH IS 53"
BASE WIDTH IS 31 3/4"
BASE LENGTH (WITHOUT ELECTRIC CORD TUBE) IS 49 1/2"
UNIT LENGTH = PLATFORM LENGTH + 3/8"
PLATFORM RAISED HEIGHT IS 39"
PLATFORM LOWERED HEIGHT IS 3 1/4"
MAX CAPACITY IS 2,000 LBS
EXTERNAL POWER UNIT
CONTROL IS HANDHELD, 2 BUTTON, NEMA 4
PENDANT WITH MINIMUM 8' USABLE COIL CORD
DURABLE LIQUID PAINT BLUE FINISH

PLEASE CIRCLE SPECIFICATIONS:

POWER	AC	DC (12V)	AIR/OIL
MOTOR VOLTAGE	115	208	230 460
DEDICATED CIRCUIT REQUIRED 60Hz			
MOTOR PHASE	SINGLE	THREE	
CONTROL	HAND	FOOT	

DECK TOLERANCE $\pm 1/2"$
TABLE HEIGHT TOLERANCE $\pm 1/2"$
DECK FLATNESS $\pm 1/4"$

A
P
P
R
O
V
A
L

I, THE UNDERSIGNED, AGREE THAT THE PRODUCT AS
REPRESENTED SATISFIES DESIGN AND DIMENSION
REQUIREMENTS. I ALSO ACKNOWLEDGE MY DUTY TO
CONFIRM PRODUCT AND INSTALLATION
COMPLIANCE WITH ALL APPLICABLE FEDERAL, STATE
AND LOCAL REGULATIONS AND STANDARDS.
**UNITS REQUIRING APPROVAL DRAWINGS OR
MODIFIED ARE NON-RETURNABLE**

[] As drawn [] As marked

Signed: _____ Date: _____

Printed Name: _____

LEAD TIME WILL START UPON RECEIPT OF SIGNED APPROVAL DRAWING

DISTRIBUTOR'S NAME:

VESTIL MANUFACTURING

DRAWN BY: BCN

DATE: 10/25/2016

REFERENCE: X

SCALE: 1:18

QUOTED LEAD TIME: X

QUOTE #
X

P.O.#
X

W.O.#
X

SALES: X

FILE NAME:

27-007-121-005

SPECIAL FEATURES

NONE