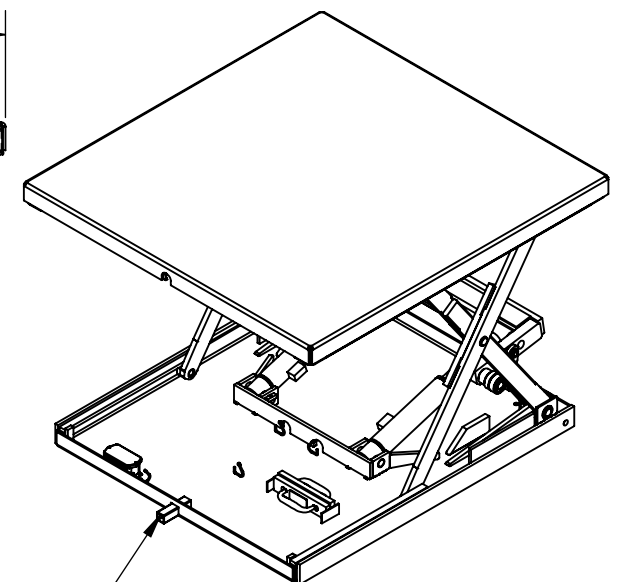
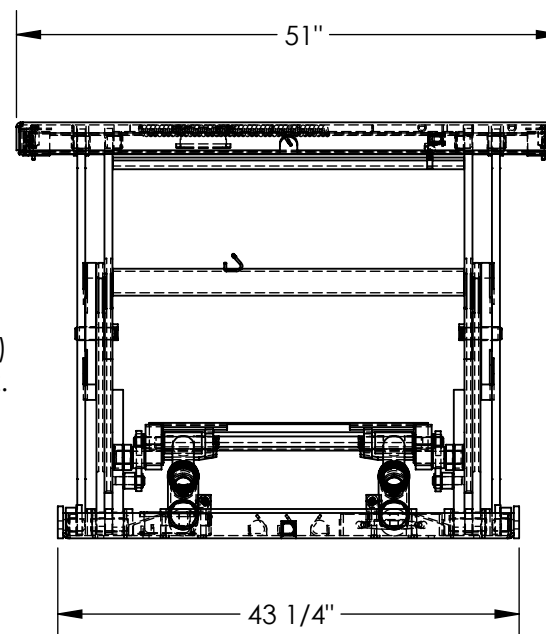
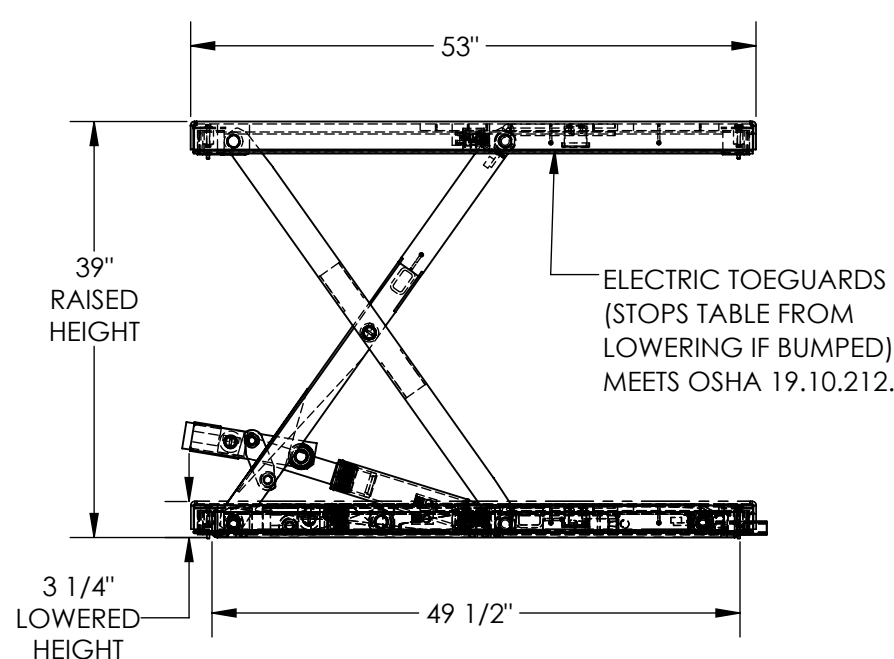


# LOW PROFILE SCISSOR TABLE - EHLTX-5153-2-39

APPROX WEIGHT: 838.12 lbs.  
DOES NOT INCLUDE WEIGHT OF POWER OR PACKAGING!!!

\*\*\* ANY ADDITIONS, DELETIONS, OR OMISSIONS MUST BE CORRECTED ON THIS DRAWING AS THIS DRAWING WILL BE CONSIDERED ALL INCLUSIVE \*\*\*

ALL GRAPHICS PROVIDED ARE FOR REFERENCE ONLY. IF CERTAIN DIMENSIONS ARE CRITICAL PLEASE VERIFY THOSE DIMENSIONS WITH YOUR SALESPERSON



HOSE & CORD EXIT  
FRAME THIS END

REMOTE POWER UNIT  
32 1/2" x 12" x 12 1/2" (L x W x H)  
WITH 8' HOSE & CABLE



DIMENSION TOLERANCE  $\pm 1/4"$

## NOTE:

\* MOST DECK ADDITIONS DERATE  
THE TABLE BY AT LEAST 250 LBS

## STANDARD FEATURES

MODEL NUMBER IS EHLTX-5153-2-39  
PLATFORM WIDTH IS 51"  
PLATFORM LENGTH IS 53"  
BASE WIDTH IS 43 1/4"  
BASE LENGTH (WITHOUT ELECTRIC CORD TUBE) IS 49 1/2"  
UNIT LENGTH = PLATFORM LENGTH + 3/8"  
PLATFORM RAISED HEIGHT IS 39"  
PLATFORM LOWERED HEIGHT IS 3 1/4"  
MAX CAPACITY IS 2,000 LBS  
EXTERNAL POWER UNIT  
CONTROL IS HANDHELD, 2 BUTTON, NEMA 4  
PENDANT WITH MINIMUM 8' USABLE COIL CORD  
DURABLE LIQUID PAINT BLUE FINISH

## PLEASE CIRCLE SPECIFICATIONS:

POWER	AC	<del>DC (12V)</del>	<del>AIR/OIL</del>
MOTOR VOLTAGE	<del>115</del>	<del>208</del>	<del>230</del> 460
DEDICATED CIRCUIT REQUIRED 60Hz			
MOTOR PHASE	<del>SINGLE</del>	THREE	
CONTROL	<del>HAND</del>	FOOT	

DECK TOLERANCE  $\pm 1/2"$   
TABLE HEIGHT TOLERANCE  $\pm 1/2"$   
DECK FLATNESS  $\pm 1/4"$

APPROVAL

I, THE UNDERSIGNED, AGREE THAT THE PRODUCT AS  
REPRESENTED SATISFIES DESIGN AND DIMENSION  
REQUIREMENTS. I ALSO ACKNOWLEDGE MY DUTY TO  
CONFIRM PRODUCT AND INSTALLATION  
COMPLIANCE WITH ALL APPLICABLE FEDERAL, STATE  
AND LOCAL REGULATIONS AND STANDARDS.  
**UNITS REQUIRING APPROVAL DRAWINGS OR  
MODIFIED ARE NON-RETURNABLE**  
[ ] As drawn [ ] As marked

Signed: \_\_\_\_\_ Date: \_\_\_\_\_

Printed Name: \_\_\_\_\_

LEAD TIME WILL START UPON RECEIPT OF SIGNED APPROVAL DRAWING

DISTRIBUTOR'S NAME:		P.O.#
VESTIL MANUFACTURING		X
DRAWN BY: BCN		W.O.#
DATE: 10/25/2016		X
REFERENCE: X	SCALE: 1:18	SALES: X
QUOTED LEAD TIME: X	QUOTE # X	FILE NAME:
		27-007-131-007

## SPECIAL FEATURES

NONE