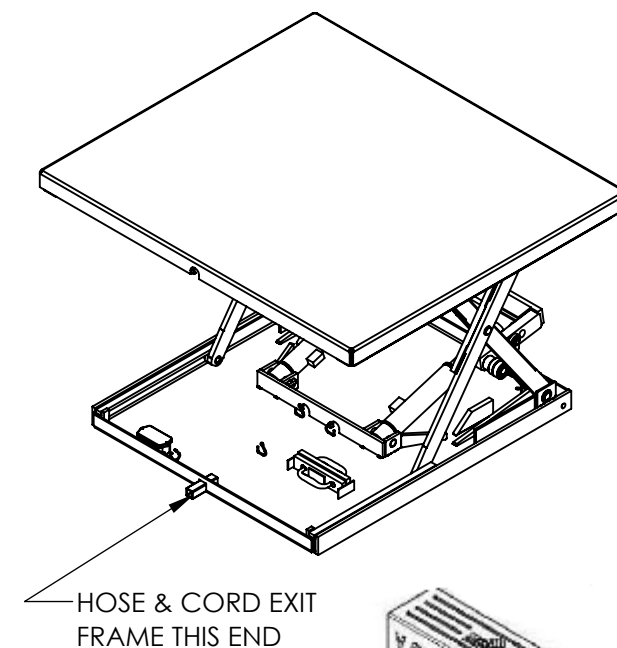
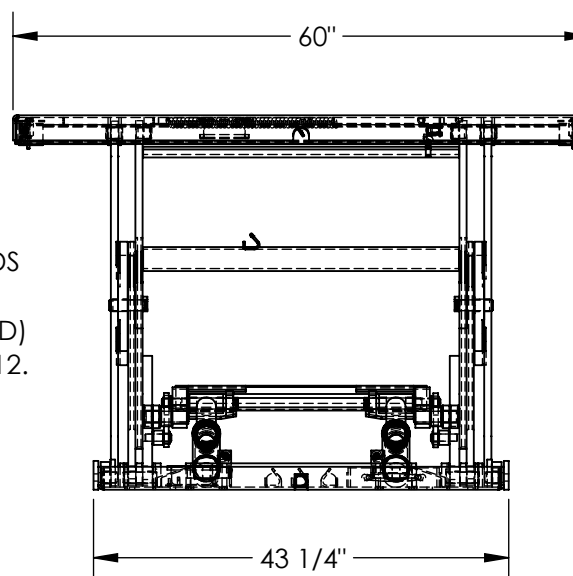
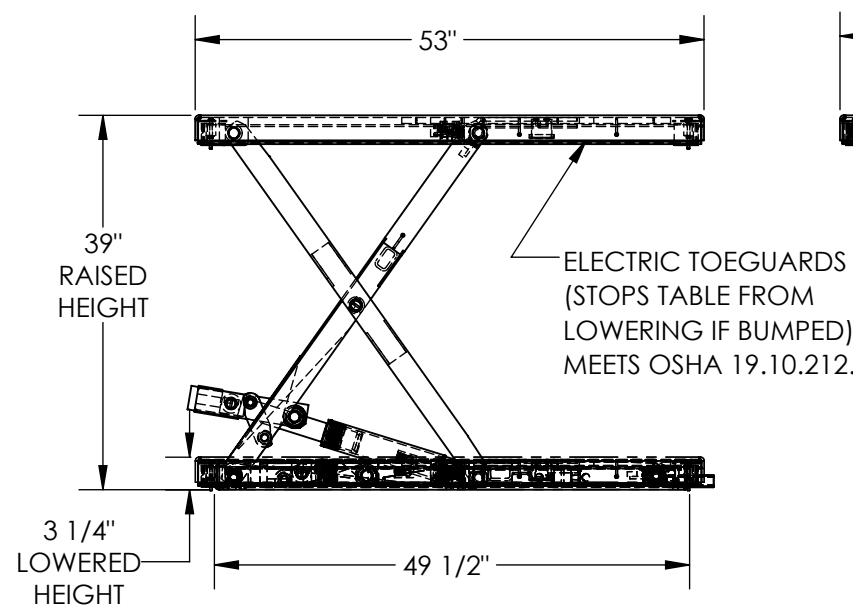


LOW PROFILE SCISSOR TABLE - EHLTX-6053-1-39

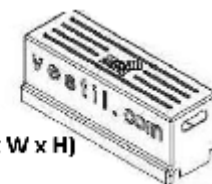
APPROX WEIGHT: 875.46 lbs.
DOES NOT INCLUDE WEIGHT OF POWER OR PACKAGING!!!

*** ANY ADDITIONS, DELETIONS, OR OMISSIONS MUST BE CORRECTED ON THIS DRAWING AS THIS DRAWING WILL BE CONSIDERED ALL INCLUSIVE ***

ALL GRAPHICS PROVIDED ARE FOR REFERENCE ONLY. IF CERTAIN DIMENSIONS ARE CRITICAL PLEASE VERIFY THOSE DIMENSIONS WITH YOUR SALESPERSON



REMOTE POWER UNIT
32 1/2" x 12" x 12 1/2" (L x W x H)
WITH 8' HOSE & CABLE



DIMENSION TOLERANCE $\pm 1/4"$

NOTE:

* MOST DECK ADDITIONS DERATE
THE TABLE BY AT LEAST 250 LBS

STANDARD FEATURES

MODEL NUMBER IS EHLTX-6053-1-39
PLATFORM WIDTH IS 60"
PLATFORM LENGTH IS 53"
BASE WIDTH IS 43 1/4"
BASE LENGTH (WITHOUT ELECTRIC CORD TUBE) IS 49 1/2"
UNIT LENGTH = PLATFORM LENGTH + 3/8"
PLATFORM RAISED HEIGHT IS 39"
PLATFORM LOWERED HEIGHT IS 3 1/4"
MAX CAPACITY IS 1,000 LBS
EXTERNAL POWER UNIT
CONTROL IS HANDHELD, 2 BUTTON, NEMA 4
PENDANT WITH MINIMUM 8' USABLE COIL CORD
DURABLE LIQUID PAINT BLUE FINISH

SPECIAL FEATURES

NONE

PLEASE CIRCLE SPECIFICATIONS:

POWER	AC	DC (12V)	AIR/OIL
MOTOR VOLTAGE	115	208	230 460
DEDICATED CIRCUIT REQUIRED 60Hz			
MOTOR PHASE	SINGLE	THREE	
CONTROL	HAND	FOOT	

DECK TOLERANCE $\pm 1/2"$
TABLE HEIGHT TOLERANCE $\pm 1/2"$
DECK FLATNESS $\pm 1/4"$

APPROVAL

I, THE UNDERSIGNED, AGREE THAT THE PRODUCT AS REPRESENTED SATISFIES DESIGN AND DIMENSION REQUIREMENTS. I ALSO ACKNOWLEDGE MY DUTY TO CONFIRM PRODUCT AND INSTALLATION COMPLIANCE WITH ALL APPLICABLE FEDERAL, STATE AND LOCAL REGULATIONS AND STANDARDS.

UNITS REQUIRING APPROVAL DRAWINGS OR MODIFIED ARE NON-RETURNABLE

[] As drawn [] As marked

Signed: _____ Date: _____

Printed Name: _____

LEAD TIME WILL START UPON RECEIPT OF SIGNED APPROVAL DRAWING

DISTRIBUTOR'S NAME:		P.O.#
VESTIL MANUFACTURING		X
DRAWN BY: BCN		W.O.#
DATE: 10/25/2016		X
REFERENCE: X	SCALE: 1:20	SALES: X
QUOTED LEAD TIME: X	QUOTE # X	FILE NAME:
		27-007-111-006