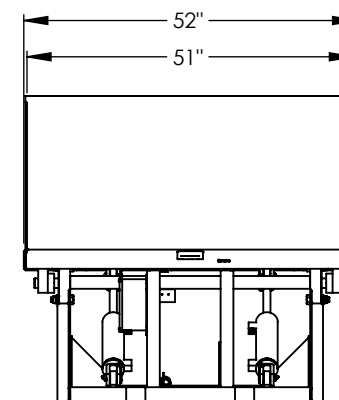
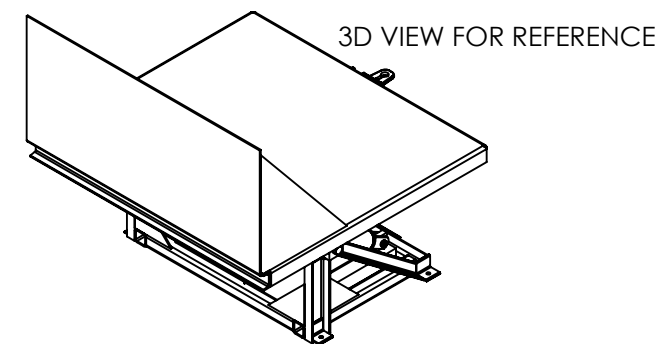
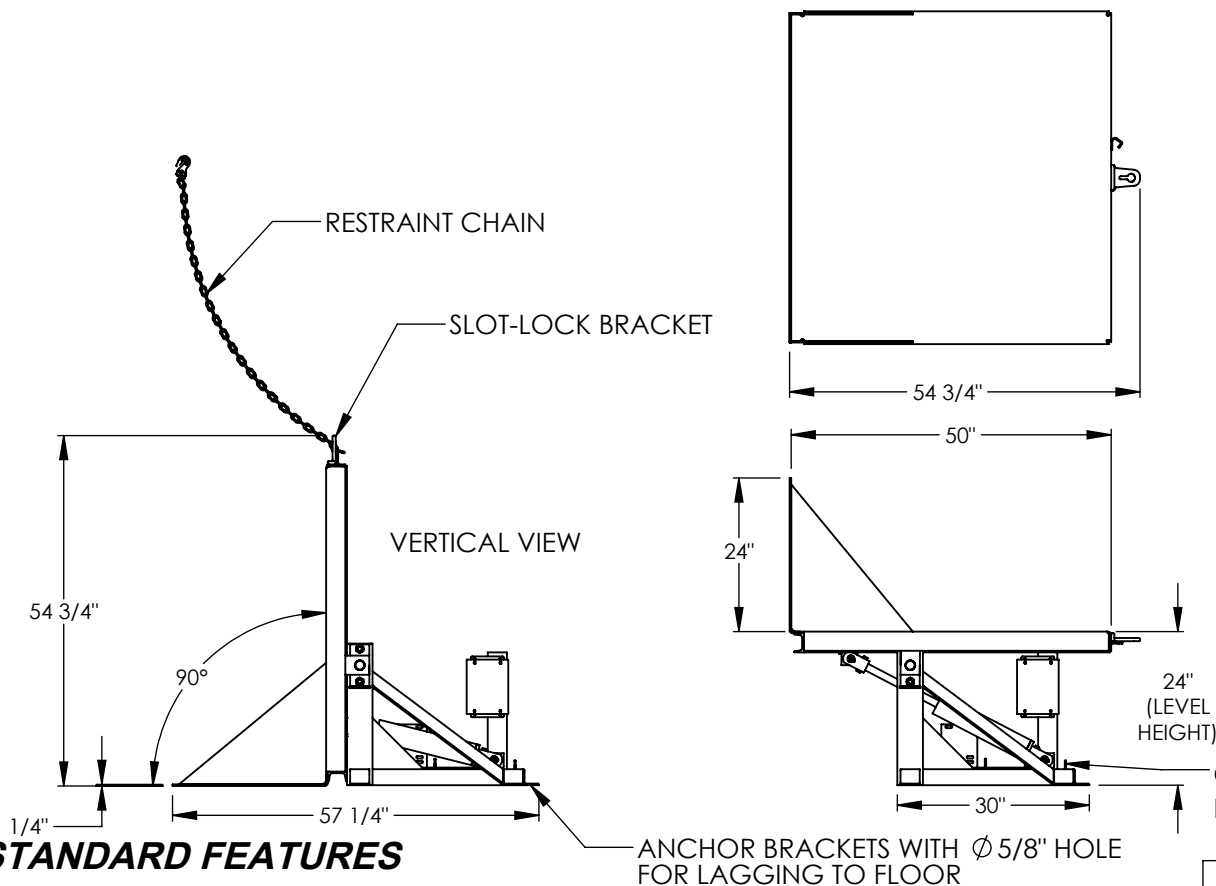


# EFFICIENCY MASTER TILT TABLE - EM1-500-4848-6

APPROX WEIGHT: 836.81 lbs.  
DOES NOT INCLUDE WEIGHT OF POWER OR PACKAGING!!!

\*\*\* ANY ADDITIONS, DELETIONS, OR OMISSIONS MUST BE CORRECTED ON THIS DRAWING AS THIS DRAWING WILL BE CONSIDERED ALL INCLUSIVE \*\*\*

ALL GRAPHICS PROVIDED ARE FOR REFERENCE ONLY. IF CERTAIN DIMENSIONS ARE CRITICAL PLEASE VERIFY THOSE DIMENSIONS WITH YOUR SALESPERSON



DIMENSION TOLERANCE  $\pm 1/4$ "

## STANDARD FEATURES

MODEL NUMBER IS EM1-500-4848-6  
MAX CAPACITY IS 6,000 LBS (EVENLY  
DISTRIBUTED LOAD)

OVERALL WIDTH IS 52"

DECK LENGTH IS 50"

OVERALL LENGTH IS 57 1/4"

DECK LEVEL HEIGHT IS 24"

OVERALL HEIGHT IS 54 3/4"

MAX TILT ANGLE IS 90°

SAFETY SLOT-LOCK RESTRAINT  
CHAIN BRACKET

ALL STEEL CONSTRUCTION

DURABLE LIQUID PAINT BLUE FINISH

WARNING: CHECK STATE AND

LOCAL CODES

CONTROL IS HANDHELD, 2 BUTTON, NEMA 4

PENDANT WITH MINIMUM 8' USABLE COIL CORD

INTERNAL POWER UNIT

## PLEASE CIRCLE SPECIFICATIONS:

POWER	AC	*DC	AIR/OIL
MOTOR VOLTAGE	115	208	230 460
DEDICATED CIRCUIT REQUIRED			
MOTOR PHASE	SINGLE	THREE	
CONTROL	HAND	*FOOT	
~ ALL BATTERY CHARGERS ARE 115V AC ~			
* BATTERY CHRG.	REMOTE	ON-BOARD	
* CHRG. INDICATOR	YES	NO	

\* AVAILABLE AT ADDITIONAL COST

## SPECIAL FEATURES

NONE

APPROVAL

I, THE UNDERSIGNED, AGREE THAT THE PRODUCT AS  
REPRESENTED SATISFIES DESIGN AND DIMENSION  
REQUIREMENTS. I ALSO ACKNOWLEDGE MY DUTY TO  
CONFIRM PRODUCT AND INSTALLATION  
COMPLIANCE WITH ALL APPLICABLE FEDERAL, STATE  
AND LOCAL REGULATIONS AND STANDARDS.  
**UNITS REQUIRING APPROVAL DRAWINGS OR  
MODIFIED ARE NON-RETURNABLE**  
[ ] As drawn [ ] As marked

Signed: \_\_\_\_\_ Date: \_\_\_\_\_

Printed Name: \_\_\_\_\_

LEAD TIME WILL START UPON RECEIPT OF SIGNED APPROVAL DRAWING

DISTRIBUTOR'S NAME:

VESTIL MANUFACTURING

DRAWN BY: MTS

DATE: 11/17/2015

REFERENCE: X

SCALE: 1:30

QUOTED LEAD TIME: X

QUOTE #  
X

P.O.# X

W.O.# X

SALES: X

FILE NAME:

03-007-078