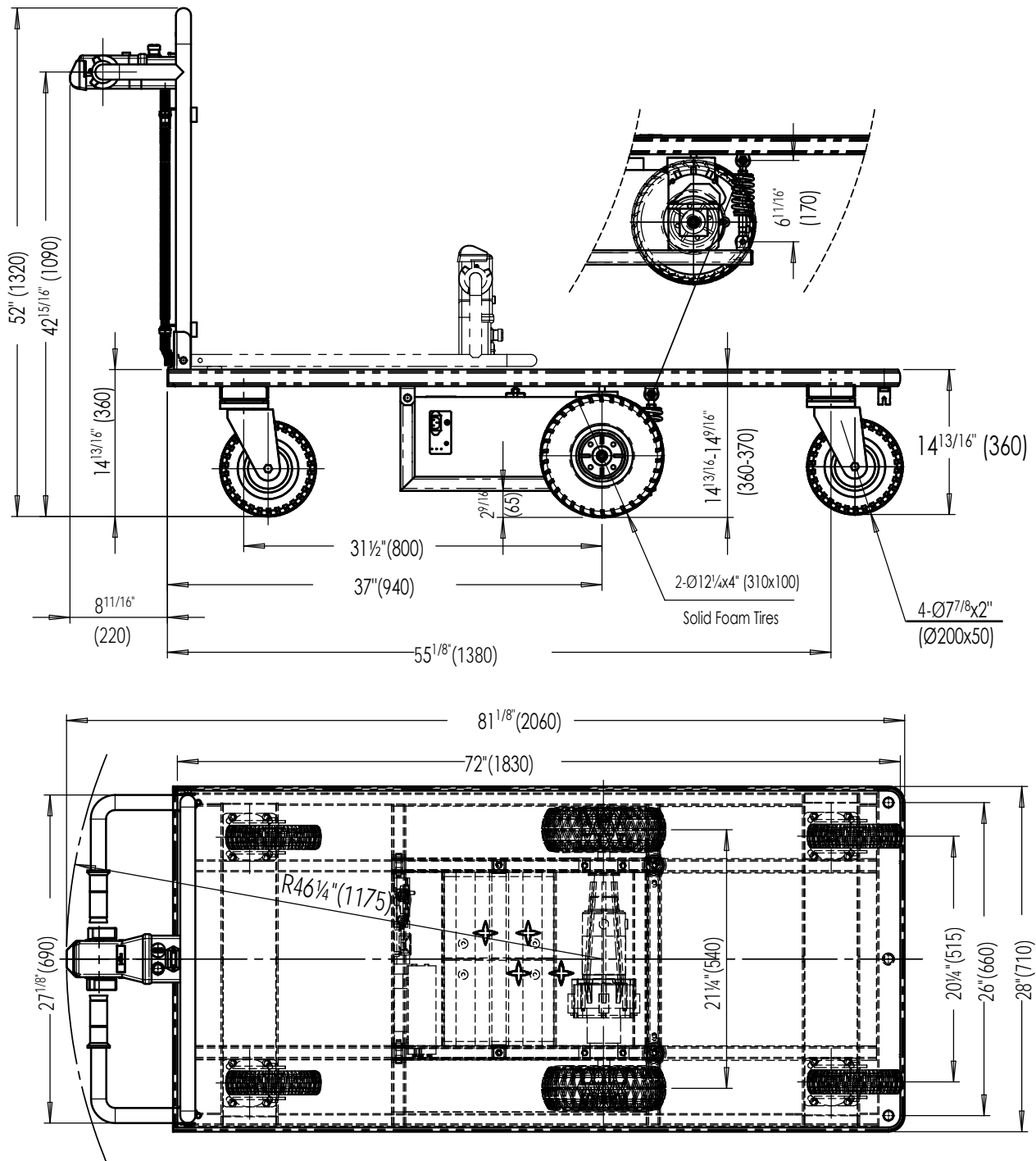


EMHC-2872-1 (ELECTRIC MATERIAL HANDLING CART)



Specifications:

Capacity: 2,000 lbs (907 kgs.)
 Drive Axle: CO4GL-125S-24-400
 Gear Ratio: 40:1
 Drive Motor: DC24V/900W
 Controller: Curtis 1212 - 2411
 Battery: 2x12V/70 Ah
 Charger: 24V/8Amps - (4amps/bank)
 Loaded Speed: 2.8m/h
 Unloaded Speed: 3.4m/h

Vestil Manufacturing Corp

Model: EMHC-2872-1

Description: Electric Material Handling Cart

Design: T.M.

Date: 12/13/18