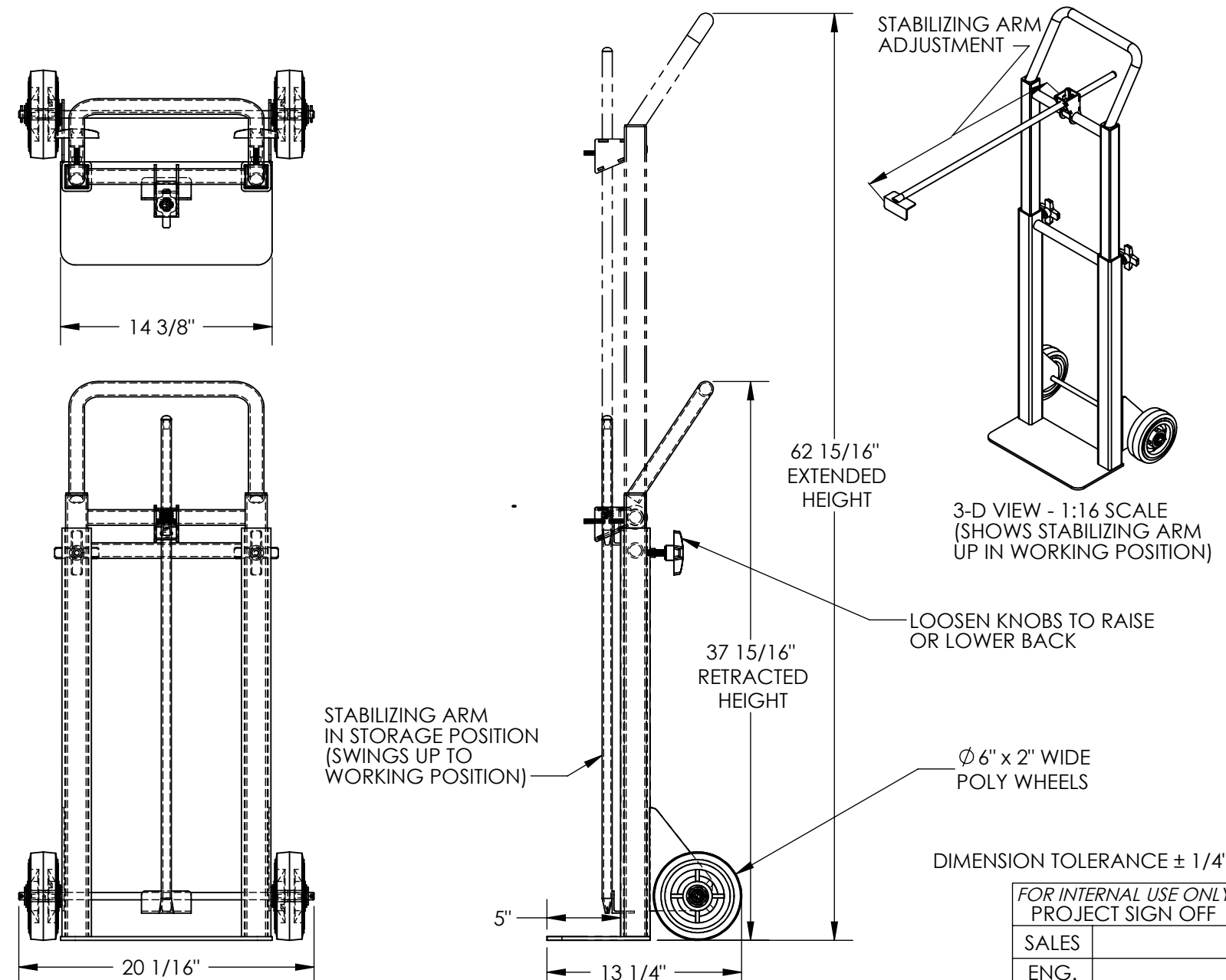


FILE CABINET HAND TRUCK - FCHT-34

APPROX WEIGHT: 75.29 lbs.
DOES NOT INCLUDE WEIGHT OF POWER OR PACKAGING!!!

ANY ADDITIONS, DELETIONS, OR OMISSIONS MUST BE CORRECTED ON THIS DRAWING AS THIS DRAWING WILL BE CONSIDERED ALL INCLUSIVE



ALL GRAPHICS PROVIDED ARE FOR REFERENCE ONLY. IF CERTAIN DIMENSIONS ARE CRITICAL PLEASE VERIFY THOSE DIMENSIONS WITH YOUR SALESPERSON

STANDARD FEATURES

- MODEL NUMBER IS FCHT-34
- CAPACITY IS: 600 LBS
- OVERALL WIDTH IS: 20 1/16"
- BASE PLATE WIDTH IS: 14 3/8"
- OVERALL LENGTH IS: 13 1/4"
- USABLE BASE PLATE LENGTH IS: 5"
- RETRACTED HEIGHT IS: 37 15/16"
- EXTENDED HEIGHT IS: 62 15/16"
- BACK HEIGHT IS ADJUSTABLE TO ACCOMMODATE CABINETS UP TO 56" TALL
- STABILIZING ARM ADJUSTS OUT TO 33" FOR VARIOUS CABINET DEPTHS
- 6" X 2" WIDE POLY WHEELS
- DURABLE LIQUID PAINT BLUE FINISH

SPECIAL FEATURES

NONE

FOR INTERNAL USE ONLY PROJECT SIGN OFF	
SALES	
ENG.	
FAB.	
POWER	

APPROVAL	I, THE UNDERSIGNED, AGREE THAT THE PRODUCT AS REPRESENTED SATISFIES DESIGN AND DIMENSION REQUIREMENTS. I ALSO ACKNOWLEDGE MY DUTY TO CONFIRM PRODUCT AND INSTALLATION COMPLIANCE WITH ALL APPLICABLE FEDERAL, STATE AND LOCAL REGULATIONS AND STANDARDS.	
	ANY MODIFIED UNITS ARE NON-RETURNABLE	
	[] As drawn [] As marked	
	Signed: _____ Date: _____	
	Printed Name: _____	
	LEAD TIME WILL START UPON RECEIPT OF SIGNED APPROVAL DRAWING	

DISTRIBUTOR'S NAME:		P.O.#
VESTIL MANUFACTURING		X
W.O.#		X
DRAWN BY: TJM	DATE: 3/25/10	SALES: X
REFERENCE: X	SCALE: 1:10	FILE NAME:
QUOTED LEAD TIME: X	QUOTE # X	33-007-200