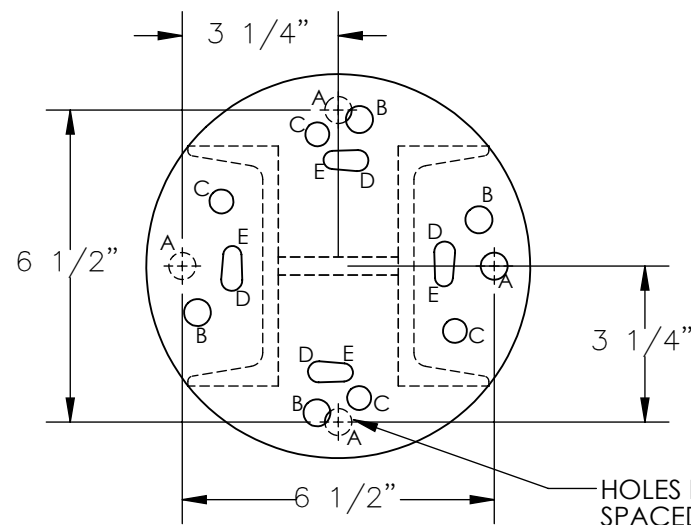


STATIONARY LEGS REPLACEMENT - FHA-STLO-RF

APPROX WEIGHT: 26.56 lbs.
DOES NOT INCLUDE WEIGHT OF POWER OR PACKAGING!!!

*** ANY ADDITIONS, DELETIONS, OR OMISSIONS MUST BE CORRECTED ON THIS DRAWING AS THIS DRAWING WILL BE CONSIDERED ALL INCLUSIVE ***

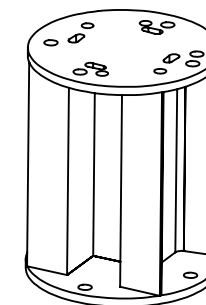
ALL GRAPHICS PROVIDED ARE FOR REFERENCE ONLY. IF CERTAIN DIMENSIONS ARE CRITICAL PLEASE VERIFY THOSE DIMENSIONS WITH YOUR SALESPERSON



HOLE CHART *

A = HOLES IN BASE ARE (4) $\phi 9/16$ - (BASE HARDWARE NOT INCLUDED)
B = HOLES FOR AHS-8/**FHA-6** ARE (4) $\phi 9/16$ --- 28-154-049
C = HOLES FOR AHS-6 ARE (4) $\phi 1/2$ ----- 28-154-050 MOUNTING HARWARE KIT NEEDED
D = HOLES FOR **FHA-2/-4** ARE (4) $\phi 7/16$ ----- 28-154-051 FOR GANTRY MODEL LISTED
E = HOLES FOR AHS-2/-4 ARE (4) $\phi 3/8$ ----- 28-154-052

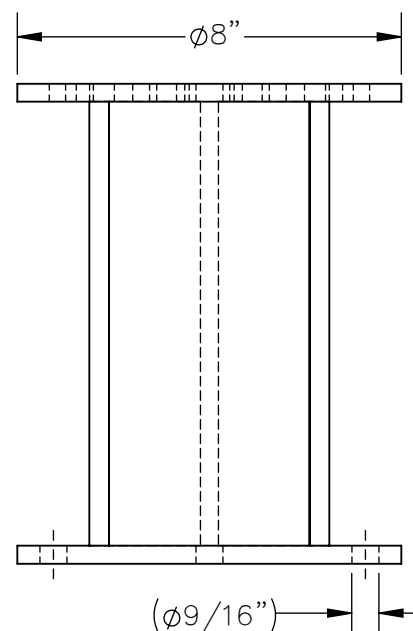
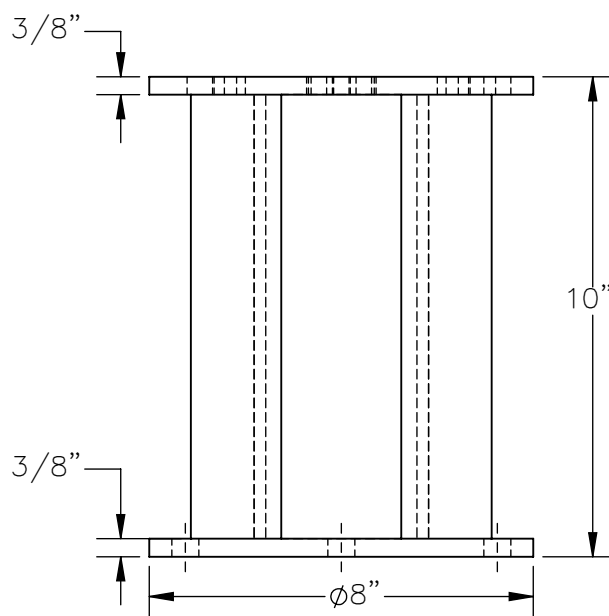
* = THE FHA-STLO-RF STATIONARY LEG HAS HOLES FOR ALL MODELS OF GANTRY CRANES, USE THE HOLES LISTED FOR THE MODEL OF CRANE BEING USED.



3-D VIEW
FOR REFERENCE

(4) WELDMENTS AND (4) MOUNTING HARDWARE KITS ARE REQUIRED FOR THE BOLT DOWN OPTION FOR A GANTRY CRANE.

DIMENSION TOLERANCE $\pm 1/4"$



STANDARD FEATURES

MODEL NUMBER IS FHA-STLO-RF
OVERALL WIDTH IS 8"
OVERALL LENGTH IS 8"
OVERALL HEIGHT IS 10"
STATIONARY LEGS ARE WELDED
STEEL CONSTRUCTION

SPECIAL FEATURES

NONE

APPROVAL

I, THE UNDERSIGNED, AGREE THAT THE PRODUCT AS REPRESENTED SATISFIES DESIGN AND DIMENSION REQUIREMENTS. I ALSO ACKNOWLEDGE MY DUTY TO CONFIRM PRODUCT AND INSTALLATION COMPLIANCE WITH ALL APPLICABLE FEDERAL, STATE AND LOCAL REGULATIONS AND STANDARDS.

ANY MODIFIED UNITS ARE NON-RETURNABLE

[] As drawn [] As marked

Signed: _____ Date: _____

Printed Name: _____

LEAD TIME WILL START UPON RECEIPT OF SIGNED APPROVAL DRAWING

FOR INTERNAL USE ONLY
PROJECT SIGN OFF

SALES	
ENG.	
FAB.	
POWER	

DISTRIBUTOR'S NAME:

VESTIL MANUFACTURING

DRAWN BY: MTS

DATE: 03/31/2017

REFERENCE: X

SCALE: 1:4

QUOTED LEAD TIME: X

QUOTE # X

P.O.# X

W.O.# X

SALES: X

FILE NAME:

28-007-415-007