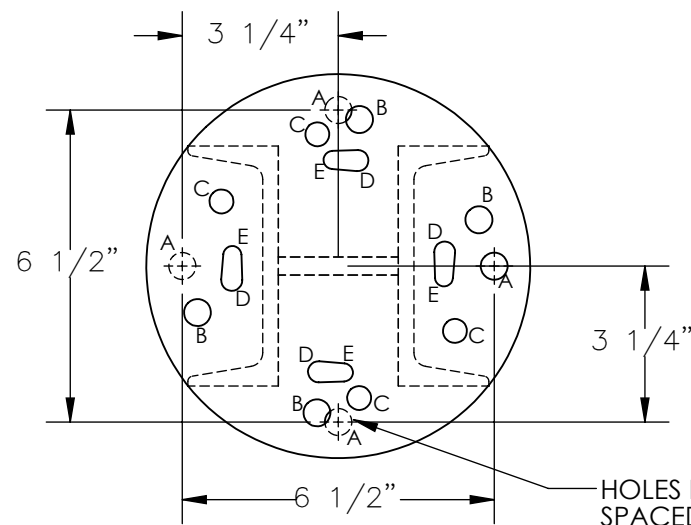


# STATIONARY LEGS REPLACEMENT - FHA-STLO

APPROX WEIGHT: 26.56 lbs.  
DOES NOT INCLUDE WEIGHT OF POWER OR PACKAGING!!!

\*\*\* ANY ADDITIONS, DELETIONS, OR OMISSIONS MUST BE CORRECTED ON THIS DRAWING AS THIS DRAWING WILL BE CONSIDERED ALL INCLUSIVE \*\*\*

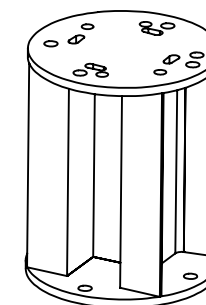
ALL GRAPHICS PROVIDED ARE FOR REFERENCE ONLY. IF CERTAIN DIMENSIONS ARE CRITICAL PLEASE VERIFY THOSE DIMENSIONS WITH YOUR SALESPERSON



## HOLE CHART \*

A = HOLES IN BASE ARE (4)  $\phi 9/16$  - (BASE HARDWARE NOT INCLUDED)  
B = HOLES FOR AHS-8/**FHA-6** ARE (4)  $\phi 9/16$  --- 28-154-049  
C = HOLES FOR AHS-6 ARE (4)  $\phi 1/2$  ----- 28-154-050 MOUNTING HARWARE KIT NEEDED  
D = HOLES FOR **FHA-2/-4** ARE (4)  $\phi 7/16$  ----- 28-154-051 FOR GANTRY MODEL LISTED  
E = HOLES FOR AHS-2/-4 ARE (4)  $\phi 3/8$  ----- 28-154-052

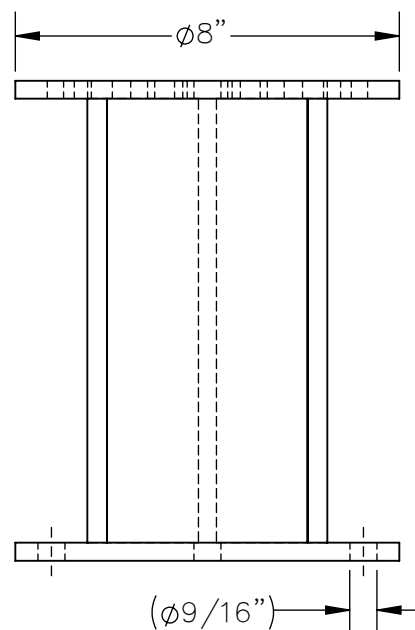
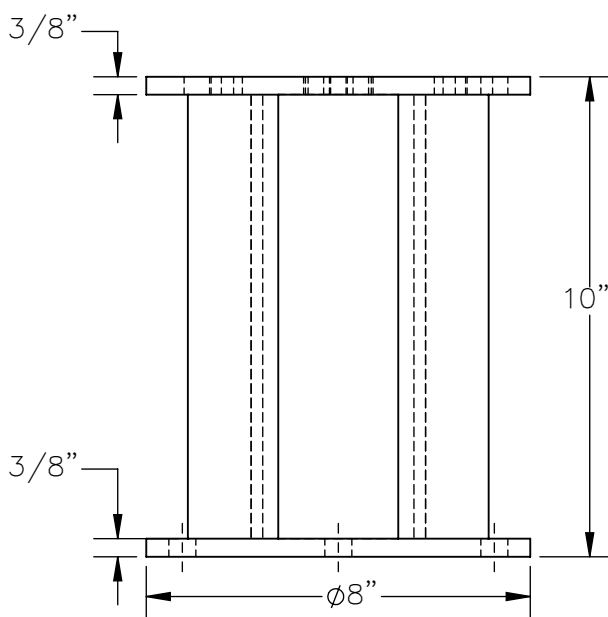
\* = THE FHA-STLO STATIONARY LEG HAS HOLES FOR ALL MODELS OF GANTRY CRANES, USE THE HOLES LISTED FOR THE MODEL OF CRANE BEING USED.



3-D VIEW  
FOR REFERENCE

(4) WELDMENTS AND (4) MOUNTING HARDWARE KITS ARE REQUIRED FOR THE BOLT DOWN OPTION FOR A GANTRY CRANE.

DIMENSION TOLERANCE  $\pm 1/4"$



## STANDARD FEATURES

MODEL NUMBER IS FHA-STLO  
OVERALL WIDTH IS 8"  
OVERALL LENGTH IS 8"  
OVERALL HEIGHT IS 10"  
STATIONARY LEGS ARE WELDED  
STEEL CONSTRUCTION

## SPECIAL FEATURES

NONE

APPROVAL

I, THE UNDERSIGNED, AGREE THAT THE PRODUCT AS REPRESENTED SATISFIES DESIGN AND DIMENSION REQUIREMENTS. I ALSO ACKNOWLEDGE MY DUTY TO CONFIRM PRODUCT AND INSTALLATION COMPLIANCE WITH ALL APPLICABLE FEDERAL, STATE AND LOCAL REGULATIONS AND STANDARDS.

**ANY MODIFIED UNITS ARE NON-RETURNABLE**

[ ] As drawn [ ] As marked

Signed: \_\_\_\_\_ Date: \_\_\_\_\_

Printed Name: \_\_\_\_\_

LEAD TIME WILL START UPON RECEIPT OF SIGNED APPROVAL DRAWING

FOR INTERNAL USE ONLY  
PROJECT SIGN OFF

SALES	
ENG.	
FAB.	
POWER	

DISTRIBUTOR'S NAME:

VESTIL MANUFACTURING

DRAWN BY: MTS

DATE: 03/31/2017

REFERENCE: X

SCALE: 1:4

QUOTED LEAD TIME: X

QUOTE # X

P.O.# X

W.O.# X

SALES: X

FILE NAME:

28-007-415-006