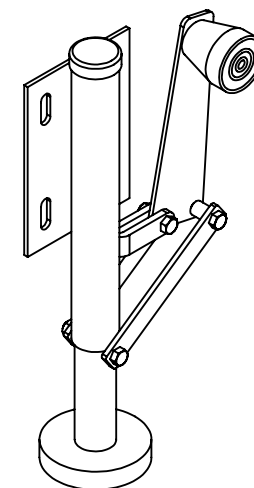
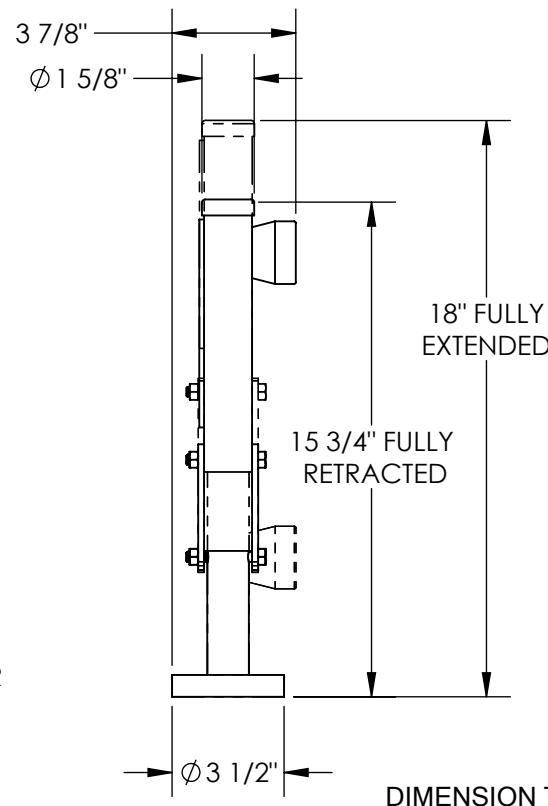
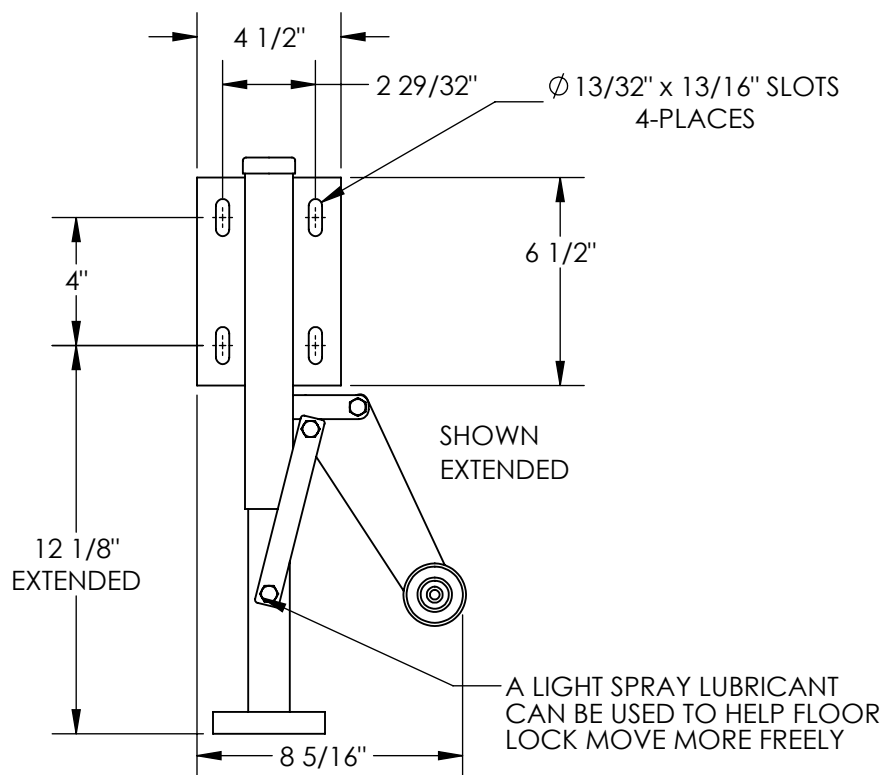


# FLOOR BRAKE SIDE MOUNT LEFT - FL-LK-SMR-SS-L

APPROX WEIGHT: lbs.  
DOES NOT INCLUDE WEIGHT OF POWER OR PACKAGING!!!

\*\*\* ANY ADDITIONS, DELETIONS, OR OMISSIONS MUST BE CORRECTED ON THIS DRAWING AS THIS DRAWING WILL BE CONSIDERED ALL INCLUSIVE \*\*\*

ALL GRAPHICS PROVIDED ARE FOR REFERENCE ONLY. IF CERTAIN DIMENSIONS ARE CRITICAL PLEASE VERIFY THOSE DIMENSIONS WITH YOUR SALESPERSON

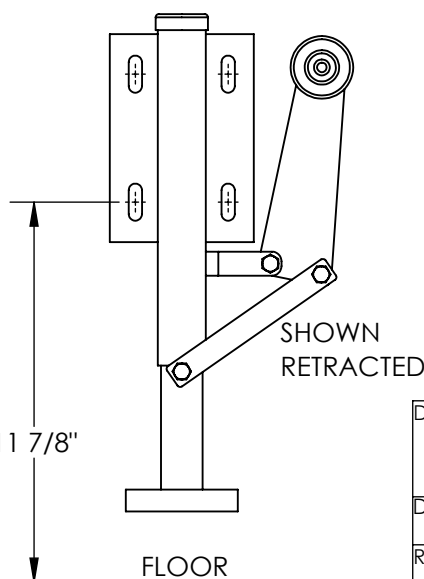


## STANDARD FEATURES

MODEL NUMBER IS FL-LK-SMR-SS-L  
OVERALL WIDTH IS 8 5/16"  
OVERALL LENGTH IS 3 7/8"  
OVERALL HEIGHT IS 18 EXTENDED  
FOOT PAD 3 1/2"  
MOUNTING HEIGHT IS 11 7/8"  
DISTANCE FROM CENTER OF LOWER HOLES TO PAD (FULLY EXTENDED) IS 12 1/8"

MOUNTING HEIGHT  
(FROM CENTER OF LOWER HOLES TO FLOOR)

11 7/8"



## SPECIAL FEATURES

NONE

APPROVAL

I, THE UNDERSIGNED, AGREE THAT THE PRODUCT AS REPRESENTED SATISFIES DESIGN AND DIMENSION REQUIREMENTS. I ALSO ACKNOWLEDGE MY DUTY TO CONFIRM PRODUCT AND INSTALLATION COMPLIANCE WITH ALL APPLICABLE FEDERAL, STATE AND LOCAL REGULATIONS AND STANDARDS.  
**UNITS REQUIRING APPROVAL DRAWINGS OR MODIFIED ARE NON-RETURNABLE**

[ ] As drawn [ ] As marked

Signed: \_\_\_\_\_ Date: \_\_\_\_\_

Printed Name: \_\_\_\_\_

LEAD TIME WILL START UPON RECEIPT OF SIGNED APPROVAL DRAWING

DISTRIBUTOR'S NAME:

VESTIL MANUFACTURING

DRAWN BY: LAS

DATE: 6/11/2013

REFERENCE: X

SCALE: 1:6

QUOTED LEAD TIME: X

QUOTE # X

P.O.# X

W.O.# X

SALES: X

FILE NAME:

16-007-365