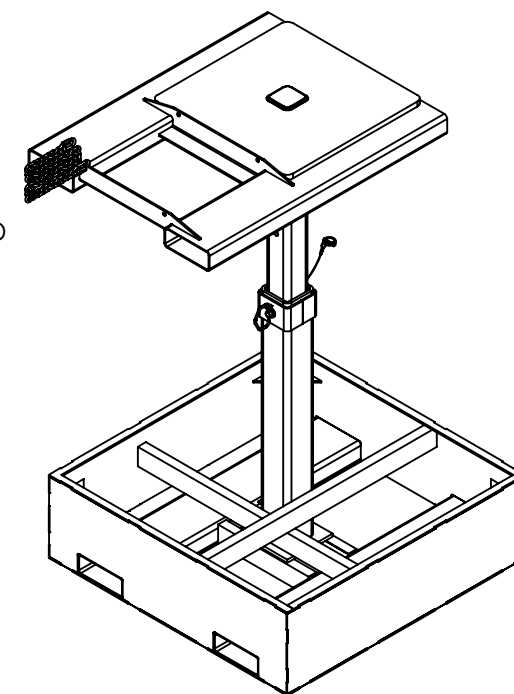
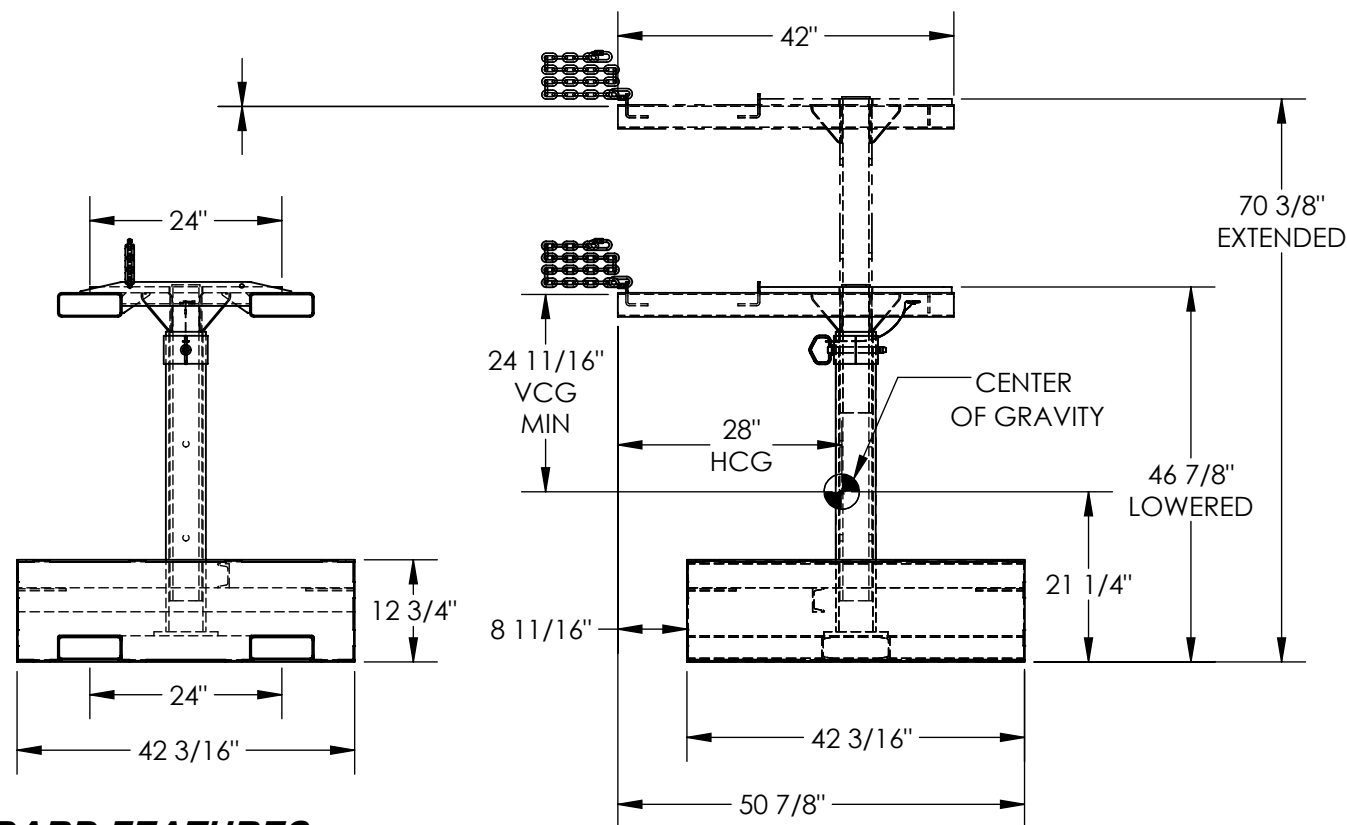


FORK MOUNTED TRASH BIN COMPACTOR - FWBC-4242-2

APPROX WEIGHT: 708 lbs.
DOES NOT INCLUDE WEIGHT OF POWER OR PACKAGING!!!

*** ANY ADDITIONS, DELETIONS, OR OMISSIONS MUST BE CORRECTED ON THIS DRAWING AS THIS DRAWING WILL BE CONSIDERED ALL INCLUSIVE ***

ALL GRAPHICS PROVIDED ARE FOR REFERENCE ONLY. IF CERTAIN DIMENSIONS ARE CRITICAL PLEASE VERIFY THOSE DIMENSIONS WITH YOUR SALESPERSON



DIMENSION TOLERANCE $\pm 1/4$ "

STANDARD FEATURES

MODEL NUMBER IS FWBC-4242-2
OVERALL WIDTH IS $42 \frac{3}{16}$ "
OVERALL LENGTH IS $50 \frac{7}{8}$ "
EXTENDED HEIGHT IS $70 \frac{3}{8}$ "
LOWERED HEIGHT IS $46 \frac{7}{8}$ "
FORK POCKETS ARE $7 \frac{1}{2}$ " x $2 \frac{1}{2}$ "
USABLE ON 24" CENTERS
DURABLE LIQUID PAINT BLUE FINISH
FILLED WEIGHT 2000 LBS.
CENTER OF GRAVITY CALCULATED W/O WEIGHT
VERTICAL CENTER OF GRAVITY IS
 $48 \frac{3}{16}$ " MAX AND $24 \frac{11}{16}$ " MIN
HORIZONTAL CENTER OF GRAVITY IS 28"

APPROX. WEIGHT / LOST LOAD = 705 LBS.
MINIMUM EFFECTIVE THICKNESS = LESS THAN 1"
NEVER EXCEED LOAD CENTER
RATING PER FORKTRUCK
MANUFACTURERS GUIDELINES.
DO NOT USE THIS FORK TRUCK
ATTACHMENT IF LOAD WILL
EXCEED FORK TRUCK MANUFACTURER'S
LOAD CENTER RATING

SPECIAL FEATURES

NONE

APPROVAL

I, THE UNDERSIGNED, AGREE THAT THE PRODUCT AS REPRESENTED SATISFIES DESIGN AND DIMENSION REQUIREMENTS. I ALSO ACKNOWLEDGE MY DUTY TO CONFIRM PRODUCT AND INSTALLATION COMPLIANCE WITH ALL APPLICABLE FEDERAL, STATE AND LOCAL REGULATIONS AND STANDARDS.
UNITS REQUIRING APPROVAL DRAWINGS OR MODIFIED ARE NON-RETURNABLE

[] As drawn [] As marked

Signed: _____ Date: _____

Printed Name: _____

LEAD TIME WILL START UPON RECEIPT OF SIGNED APPROVAL DRAWING

DISTRIBUTOR'S NAME:		P.O.#
VESTIL MANUFACTURING		X
DRAWN BY: CJC		W.O.#
DATE: 5/31/2022		X
REFERENCE: X	SCALE: 1:24	SALES: X
QUOTED LEAD TIME: X	QUOTE # X	FILE NAME:
		47-007-062