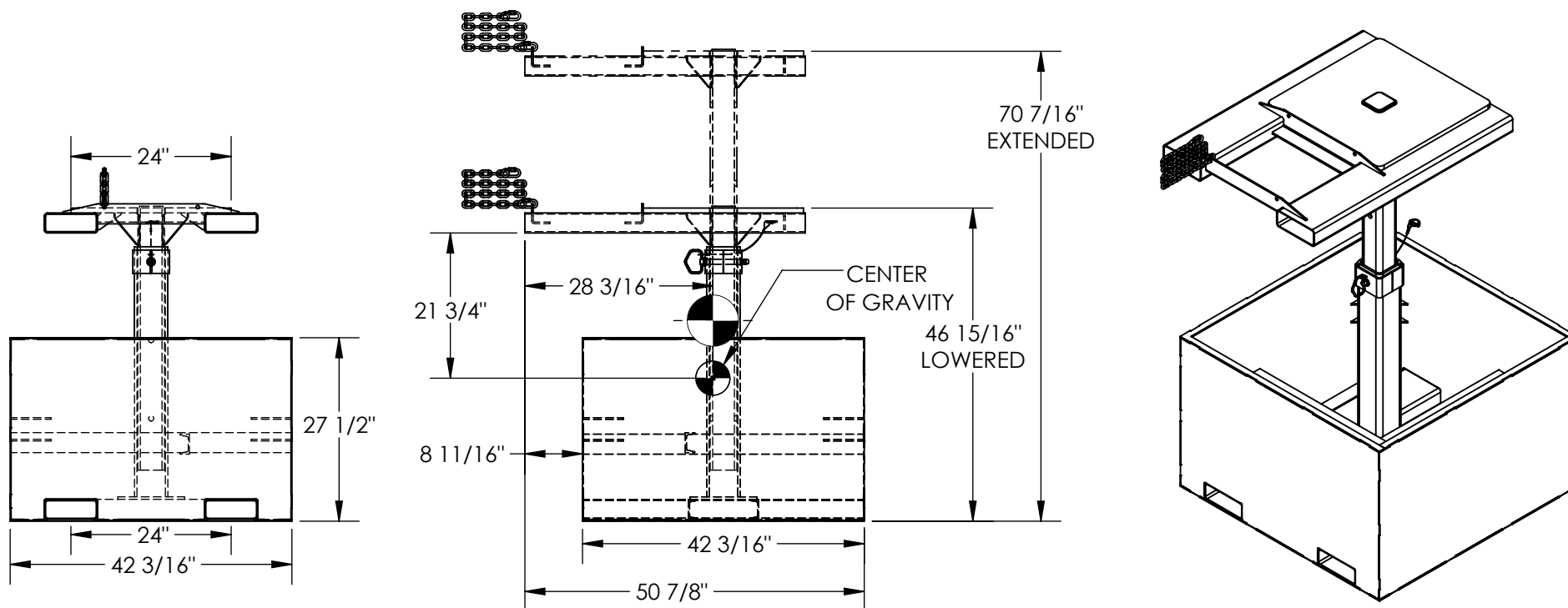


# FORK MOUNTED TRASH BIN COMPACTOR - FWBC-4242-4

APPROX WEIGHT: 788 lbs.  
DOES NOT INCLUDE WEIGHT OF POWER OR PACKAGING!!!

\*\*\* ANY ADDITIONS, DELETIONS, OR OMISSIONS MUST BE CORRECTED ON THIS DRAWING AS THIS DRAWING WILL BE CONSIDERED ALL INCLUSIVE \*\*\*

ALL GRAPHICS PROVIDED ARE FOR REFERENCE ONLY. IF CERTAIN DIMENSIONS ARE CRITICAL PLEASE VERIFY THOSE DIMENSIONS WITH YOUR SALESPERSON



## STANDARD FEATURES

MODEL NUMBER IS FWBC-4242-4  
OVERALL WIDTH IS 42 3/16"  
OVERALL LENGTH IS 50 7/8"  
EXTENDED HEIGHT IS 70 7/16"  
LOWERED HEIGHT IS 46 15/16"  
FORK POCKETS ARE 7 1/2" x 2 1/2"  
USABLE ON 24" CENTERS  
DURABLE LIQUID PAINT BLUE FINISH  
FILLED WEIGHT 4000 LBS. APPROX.

APPROX. WEIGHT / LOST LOAD = 785 LBS.  
MINIMUM EFFECTIVE THICKNESS = LESS THAN 1"  
NEVER EXCEED LOAD CENTER  
RATING PER FORKTRUCK  
MANUFACTURERS GUIDELINES.  
DO NOT USE THIS FORK TRUCK  
ATTACHMENT IF LOAD WILL  
EXCEED FORK TRUCK MANUFACTURER'S  
LOAD CENTER RATING

DIMENSION TOLERANCE  $\pm 1/4"$

APPROVAL

I, THE UNDERSIGNED, AGREE THAT THE PRODUCT AS REPRESENTED SATISFIES DESIGN AND DIMENSION REQUIREMENTS. I ALSO ACKNOWLEDGE MY DUTY TO CONFIRM PRODUCT AND INSTALLATION COMPLIANCE WITH ALL APPLICABLE FEDERAL, STATE AND LOCAL REGULATIONS AND STANDARDS.  
**UNITS REQUIRING APPROVAL DRAWINGS OR MODIFIED ARE NON-RETURNABLE**

☐ As drawn ☐ As marked

Signed: \_\_\_\_\_ Date: \_\_\_\_\_

Printed Name: \_\_\_\_\_

LEAD TIME WILL START UPON RECEIPT OF SIGNED APPROVAL DRAWING

## SPECIAL FEATURES

NONE

DISTRIBUTOR'S NAME:		P.O.#
VESTIL MANUFACTURING		X
DATE: 5/31/2022		W.O.#
DRAWN BY: CJC		X
REFERENCE: X	SCALE: 1:24	SALES: X
QUOTED LEAD TIME: X	QUOTE # X	FILE NAME: 47-007-064