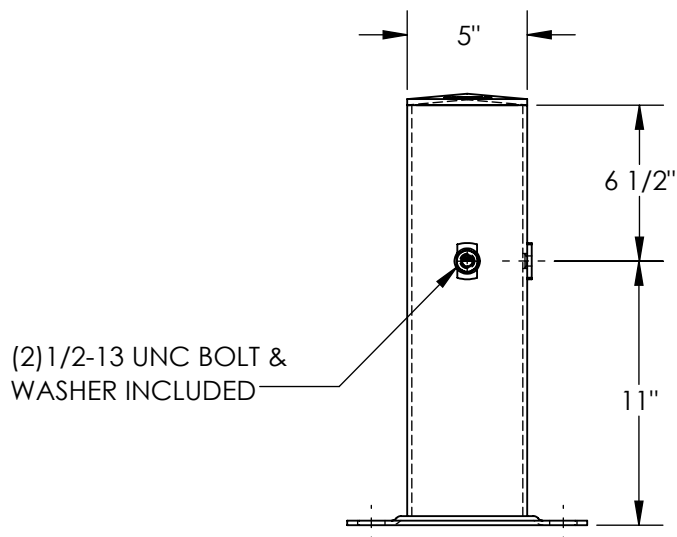
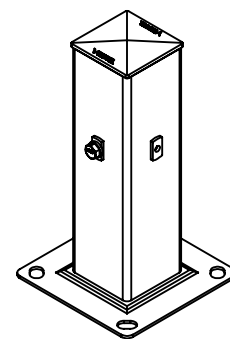
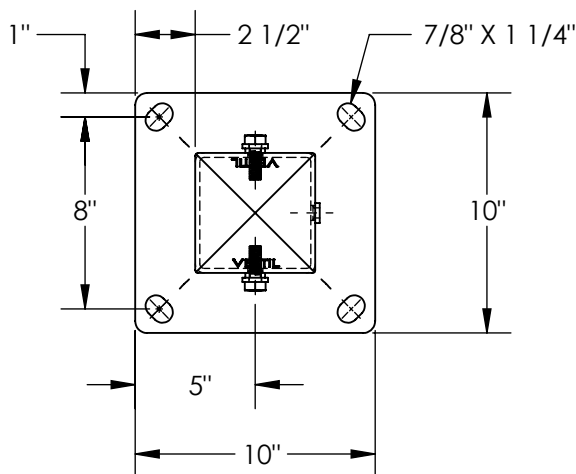
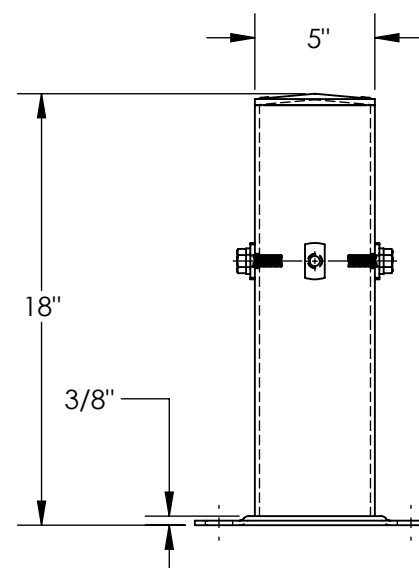


# TUBULAR POST GUARD RAIL - GR-H2R-BO-TP18-YL

\*\*\*ANY ADDITIONS, DELETIONS, OR OMISSIONS MUST BE CORRECTED ON THIS DRAWING AS THIS DRAWING WILL BE CONSIDERED ALL INCLUSIVE\*\*\*  
 ALL GRAPHICS PROVIDED ARE FOR REFERENCE ONLY. IF CERTAIN DIMENSIONS ARE CRITICAL PLEASE VERIFY THOSE DIMENSIONS WITH YOUR SALESPERSON  
 APPROX WEIGHT: 28.99 LBS.  
 DOES NOT INCLUDE WEIGHT OF POWER OR PACKAGING!!!



(2) 1/2-13 UNC BOLT & WASHER INCLUDED



DIMENSION TOLERANCE  $\pm 1/2"$

## STANDARD FEATURES

MODEL NUMBER IS: GR-H2R-BO-TP18-YL  
 OVERALL HEIGHT IS: 18"  
 SQUARE TUBE IS: 5"x5"  
 BASE PLATE IS: 3/8"x10"x10" WITH  
 7/8"x1 1/4" ANCHOR HOLES ON 8" CENTERS  
 RATED FOR 4,000 LBS AT 4 MPH  
 TOUGH BAKED IN POWDER COATED  
 YELLOW FINISH

## SPECIAL FEATURES

NONE

APPROVAL

I, THE UNDERSIGNED, AGREE THAT THE PRODUCT AS REPRESENTED SATISFIES DESIGN AND DIMENSION REQUIREMENTS. I ALSO ACKNOWLEDGE MY DUTY TO CONFIRM PRODUCT AND INSTALLATION COMPLIANCE WITH ALL APPLICABLE FEDERAL, STATE AND LOCAL REGULATIONS AND STANDARDS.  
**UNITS REQUIRING APPROVAL DRAWINGS OR MODIFIED ARE NON-RETURNABLE**  
☐ As drawn ☐ As marked

Signed: \_\_\_\_\_ Date: \_\_\_\_\_

Printed Name: \_\_\_\_\_

LEAD TIME WILL START UPON RECEIPT OF SIGNED APPROVAL DRAWING

DISTRIBUTOR'S NAME:

VESTIL MANUFACTURING

DRAWN BY: MTS

DATE: 2/14/2013

REFERENCE: X

SCALE: 1:8

QUOTED LEAD TIME: X

QUOTE # X

P.O.# X

W.O.# X

SALES: X

FILE NAME:

23-007-027