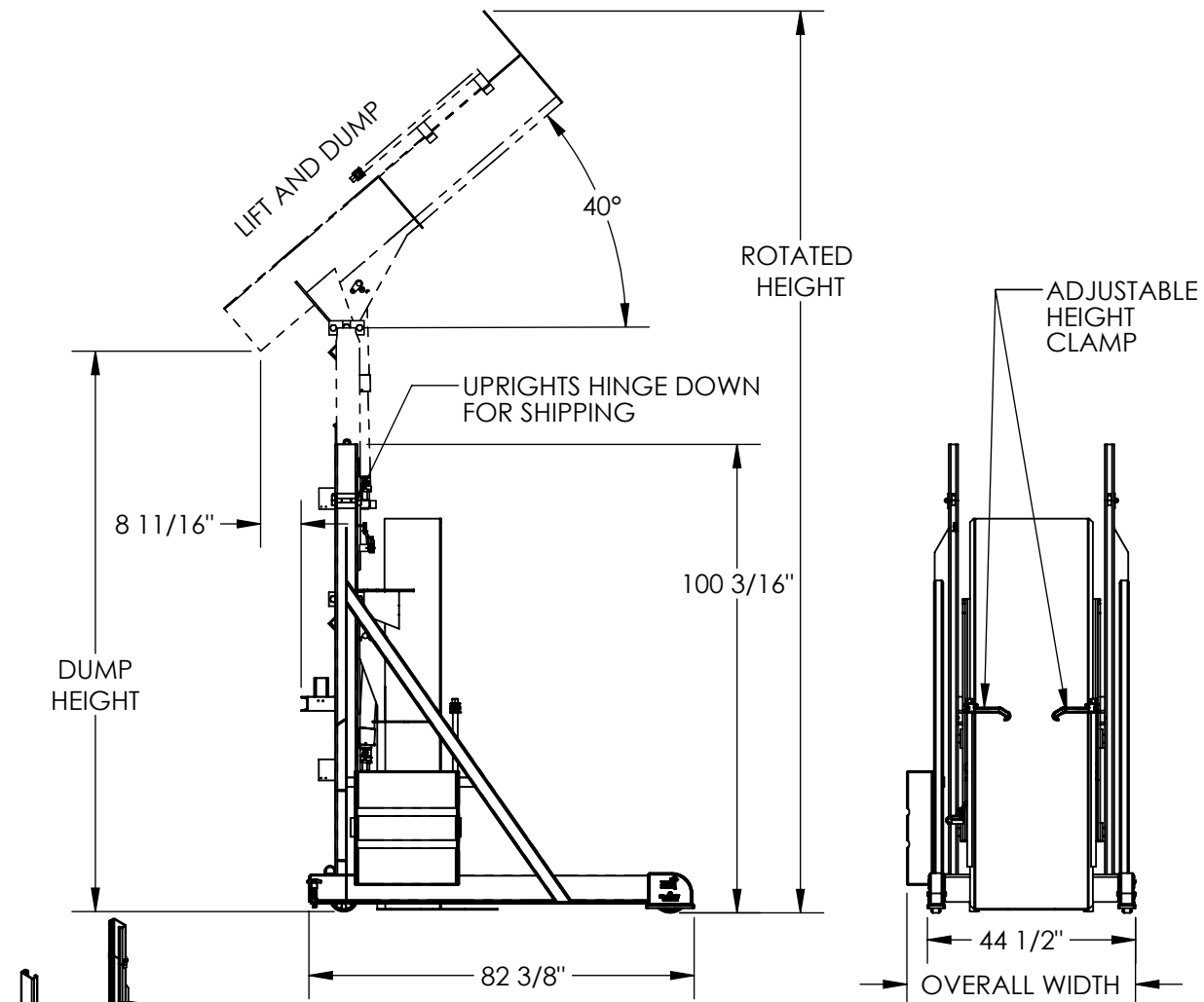


APPROX WEIGHT: 1276.88 lbs.  
DOES NOT INCLUDE WEIGHT OF POWER OR PACKAGING!!!

PORTABLE LIFT-AND-DUMP HYDRAULIC DRUM DUMPERS - HLD-116-15-P

\*\*\* ANY ADDITIONS, DELETIONS, OR OMISSIONS MUST BE CORRECTED ON THIS DRAWING AS THIS DRAWING WILL BE CONSIDERED ALL INCLUSIVE \*\*\*  
ALL GRAPHICS PROVIDED ARE FOR REFERENCE ONLY. IF CERTAIN DIMENSIONS ARE CRITICAL PLEASE VERIFY THOSE DIMENSIONS WITH YOUR SALESPERSON



STANDARD FEATURES

- MODEL NUMBER IS HLD-116-15-P
  - LIFT AND DUMP DESIGN
  - INDEPENDENT LIFT AND DUMP OPERATION
  - MAX. DUMP HEIGHT IS 116"
  - MIN. DUMP HEIGHT IS 60"
  - OVERALL WIDTH IS 51"
  - OVERALL LENGTH IS 82 3/8"
  - LEVEL HEIGHT IS 100 3/16"
  - ROTATED HEIGHT IS 194"
  - DUMP ANGLE IS 40°
  - UNIT IS PORTABLE
  - MAX CAPACITY IS 1,500 LBS.
  - 3000 PSI HYD. COMPONENT RATING
  - DURABLE LIQUID PAINT BLUE FINISH FRAME
  - TOUGH BAKED IN POWDER COATED YELLOW FINISH CHUTE
- WARNING:  
CHECK LOCAL AND STATE CODES!

SPECIAL FEATURES

NONE

DIMENSION TOLERANCE ± 1/4"

PLEASE CIRCLE SPECIFICATIONS:

POWER	AC	* DC	* AIR/OIL
MOTOR VOLTAGE	115	208	230 460
DEDICATED CIRCUIT REQUIRED			
MOTOR PHASE	SINGLE	THREE	
CONTROL	HAND	* FOOT	
~ ALL BATTERY CHARGERS ARE 115V AC ~			
BATTERY CHRG.	REMOTE	ON-BOARD	
CHRG. INDICATOR	YES	NO	

\* AVAILABLE AT ADDITIONAL COST

APPROVAL

I, THE UNDERSIGNED, AGREE THAT THE PRODUCT AS REPRESENTED SATISFIES DESIGN AND DIMENSION REQUIREMENTS. I ALSO ACKNOWLEDGE MY DUTY TO CONFIRM PRODUCT AND INSTALLATION COMPLIANCE WITH ALL APPLICABLE FEDERAL, STATE AND LOCAL REGULATIONS AND STANDARDS.  
**UNITS REQUIRING APPROVAL DRAWINGS OR MODIFIED ARE NON-RETURNABLE**  
[ ] As drawn [ ] As marked

Signed: \_\_\_\_\_ Date: \_\_\_\_\_

Printed Name: \_\_\_\_\_

LEAD TIME WILL START UPON RECEIPT OF SIGNED APPROVAL DRAWING

DISTRIBUTOR'S NAME: VESTIL MANUFACTURING

P.O.# ☒ X

W.O.# ☐ X

SALES: ☒ X

FILE NAME: 09-007-107-001

DRAWN BY: CA

DATE: 09/02/2011

REFERENCE: ☒ X

SCALE: 1:40

QUOTED LEAD TIME: ☒ X

QUOTE # ☒ X