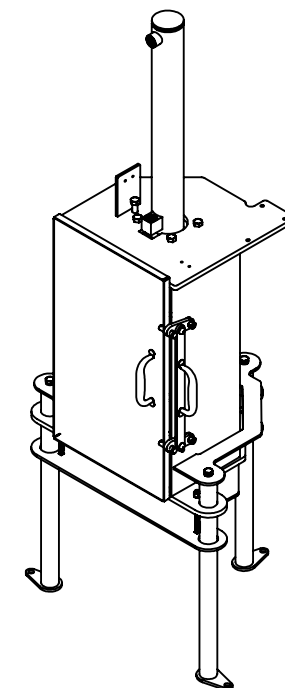
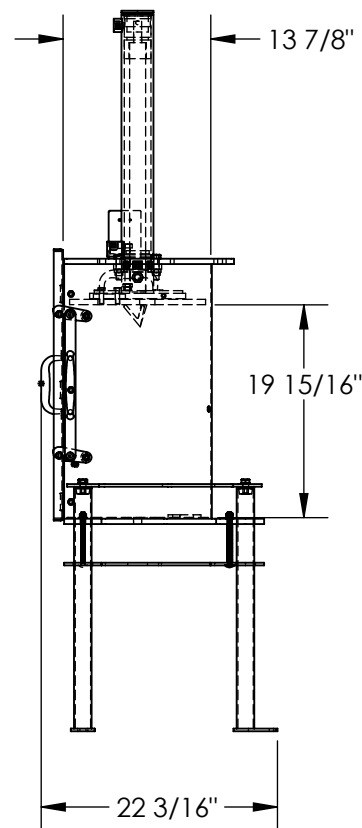
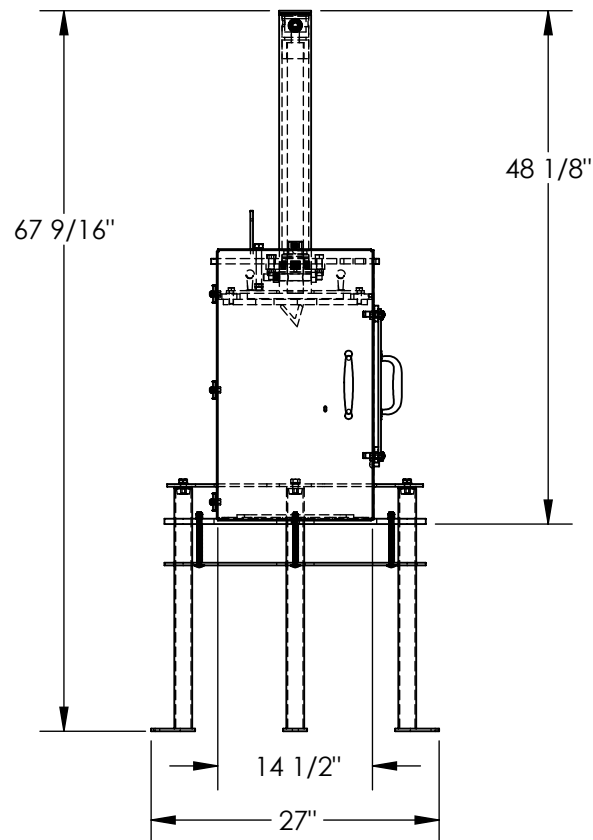


HYDRAULIC PAIL CRUSHER- HPC-405

APPROX WEIGHT: 221.59 lbs.
DOES NOT INCLUDE WEIGHT OF POWER OR PACKAGING!!!

*** ANY ADDITIONS, DELETIONS, OR OMISSIONS MUST BE CORRECTED ON THIS DRAWING AS THIS DRAWING WILL BE CONSIDERED ALL INCLUSIVE ***
ALL GRAPHICS PROVIDED ARE FOR REFERENCE ONLY. IF CERTAIN DIMENSIONS ARE CRITICAL PLEASE VERIFY THOSE DIMENSIONS WITH YOUR SALESPERSON



DIMENSION TOLERANCE $\pm 1/4$ "

STANDARD FEATURES

MODEL NUMBER IS HPC-405
OVERALL WIDTH IS 27"
USABLE INSIDE WIDTH IS 14 1/2"
OVERALL LENGTH IS 22 3/16"
USABLE INSIDE LENGTH IS 13 7/8"
OVERALL HEIGHT IS 48 1/8"
USABLE INSIDE HEIGHT IS 19 15/16"
10,000 LBS OF CRUSHING FORCE
HYDRAULIC SYSTEM PRESSURE IS 3000 PSI
18" CYLINDER STROKE REDUCES STEEL PAILS
TO APPROXIMATELY 2"
REMOVABLE BASE FOR BENCH TOP MOUNTING
POWER UNIT: 115 V AC SINGLE PHASE
CONTROL: HAND
TOUGH BAKED IN POWDER COAT BLUE FINISH

SPECIAL FEATURES

NONE

APPROVAL

I, THE UNDERSIGNED, AGREE THAT THE PRODUCT AS REPRESENTED SATISFIES DESIGN AND DIMENSION REQUIREMENTS. I ALSO ACKNOWLEDGE MY DUTY TO CONFIRM PRODUCT AND INSTALLATION COMPLIANCE WITH ALL APPLICABLE FEDERAL, STATE AND LOCAL REGULATIONS AND STANDARDS.
UNITS REQUIRING APPROVAL DRAWINGS OR MODIFIED ARE NON-RETURNABLE
[] As drawn [] As marked

Signed: _____ Date: _____

Printed Name: _____

LEAD TIME WILL START UPON RECEIPT OF SIGNED APPROVAL DRAWING

DISTRIBUTOR'S NAME:		P.O.#
VESTIL MANUFACTURING		X
DRAWN BY: RAL		W.O.#
DATE: 08/31/15		X
REFERENCE: X	SCALE: 1:18	SALES: X
QUOTED LEAD TIME: X	QUOTE # X	FILE NAME:
		22-007-019