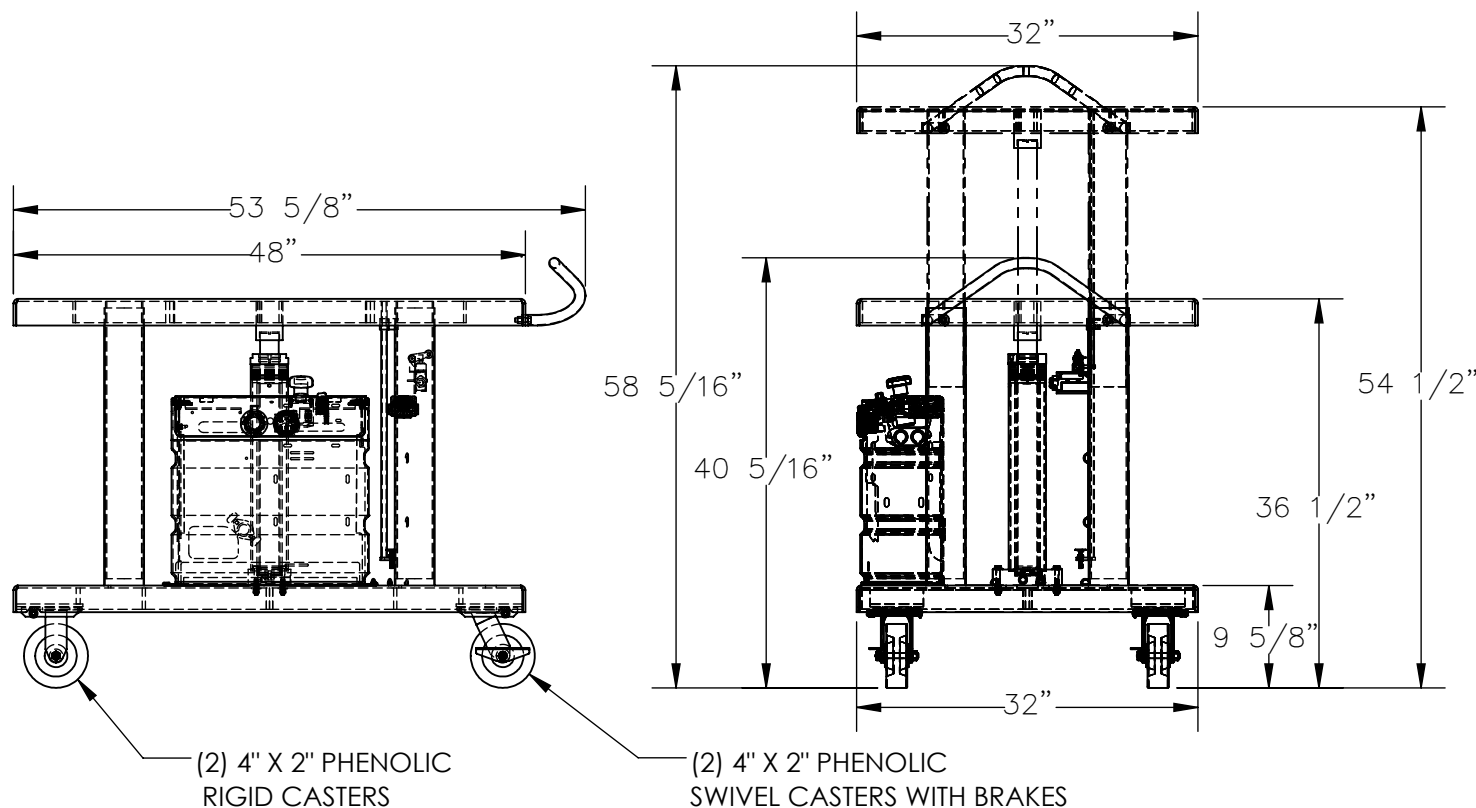


# HYDRAULIC POST TABLE - HT-60-3248-DC

APPROX WEIGHT: 513.71 lbs.  
DOES NOT INCLUDE WEIGHT OF POWER OR PACKAGING!!!

\*\*\* ANY ADDITIONS, DELETIONS, OR OMISSIONS MUST BE CORRECTED ON THIS DRAWING AS THIS DRAWING WILL BE CONSIDERED ALL INCLUSIVE \*\*\*

ALL GRAPHICS PROVIDED ARE FOR REFERENCE ONLY. IF CERTAIN DIMENSIONS ARE CRITICAL PLEASE VERIFY THOSE DIMENSIONS WITH YOUR SALESPERSON



DIMENSION TOLERANCE  $\pm 1/4"$

## STANDARD FEATURES

MODEL NUMBER IS HT-60-3248-DC  
MAX CAPACITY IS 6,000 LBS.  
OVERALL WIDTH: 32"  
USABLE WIDTH: 32"  
OVERALL LENGTH: 53 5/8"  
USABLE LENGTH: 48"  
RAISED HEIGHT: 54 1/2"  
LOWERED HEIGHT: 36 1/2"  
OVERALL RAISED HEIGHT: 58 5/16"  
OVERALL LOWERED HEIGHT: 40 5/16"  
HANDHELD PUSH BUTTON CONTROL  
W/ 8ft EXTENDED COIL CORD  
(2) PHENOLIC RIGID CASTERS  
(2) PHENOLIC SWIVEL CASTERS WITH BRAKES  
HYDRAULIC HOSES NOT SHOWN  
DURABLE BAKED IN POWDER COATED BLUE FINISH

## SPECIAL FEATURES

NONE

## 12V DC POWER

ON-BOARD BATTERY  
INDICATOR & CHARGER  
CONTACT FACTORY FOR  
OTHER POWER OPTIONS

APPROVAL

I, THE UNDERSIGNED, AGREE THAT THE PRODUCT AS REPRESENTED SATISFIES DESIGN AND DIMENSION REQUIREMENTS. I ALSO ACKNOWLEDGE MY DUTY TO CONFIRM PRODUCT AND INSTALLATION COMPLIANCE WITH ALL APPLICABLE FEDERAL, STATE AND LOCAL REGULATIONS AND STANDARDS.  
**UNITS REQUIRING APPROVAL DRAWINGS OR MODIFIED ARE NON-RETURNABLE**  
☐ As drawn ☐ As marked

Signed: \_\_\_\_\_ Date: \_\_\_\_\_

Printed Name: \_\_\_\_\_

LEAD TIME WILL START UPON RECEIPT OF SIGNED APPROVAL DRAWING

DISTRIBUTOR'S NAME:		P.O.#
VESTIL MANUFACTURING		X
DRAWN BY: CRH		W.O.#
DATE: 3/11/2020		X
REFERENCE: X	SCALE: 1:18	SALES: X
QUOTED LEAD TIME: X	QUOTE # X	FILE NAME:
		21-007-149-001