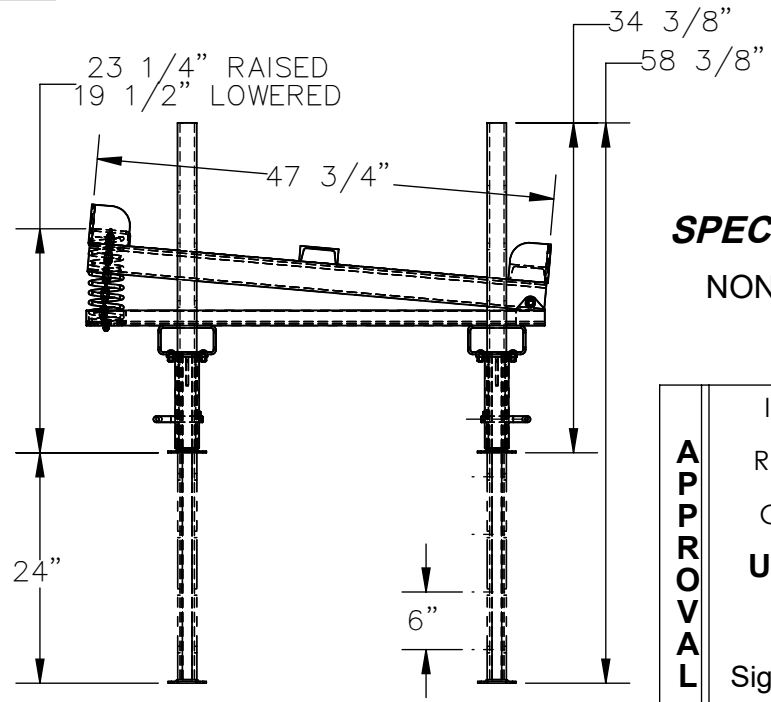
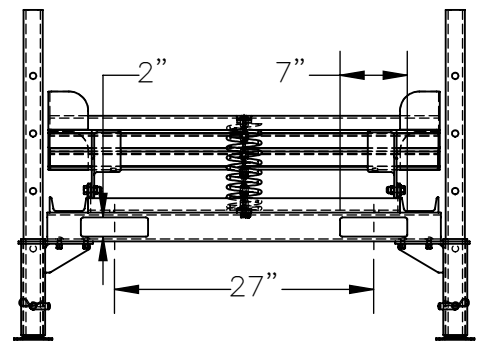
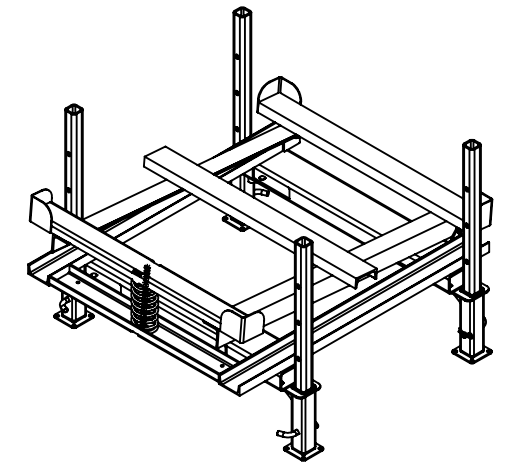
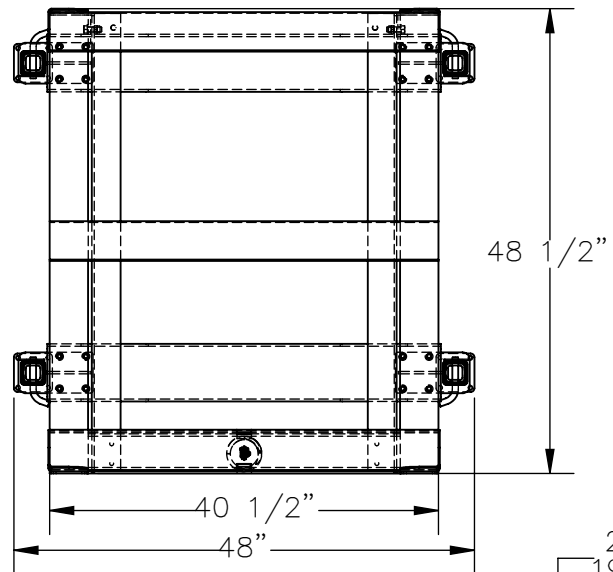


ADJUSTABLE IBC TILT STAND W/ FORK POCKETS - IBC-TLT-FPL

APPROX WEIGHT: 337.10 lbs.
DOES NOT INCLUDE WEIGHT OF POWER OR PACKAGING!!!

*** ANY ADDITIONS, DELETIONS, OR OMISSIONS MUST BE CORRECTED ON THIS DRAWING AS THIS DRAWING WILL BE CONSIDERED ALL INCLUSIVE ***

ALL GRAPHICS PROVIDED ARE FOR REFERENCE ONLY. IF CERTAIN DIMENSIONS ARE CRITICAL PLEASE VERIFY THOSE DIMENSIONS WITH YOUR SALESPERSON



SPECIAL FEATURES

NONE

DIMENSION TOLERANCE ± 1/4"

STANDARD FEATURES

- MODEL NUMBER IS: IBC-TLT-FPL
- MAX CAPACITY IS: 4,400 LBS
- OVERALL WIDTH IS: 48"
- USABLE WIDTH IS: 40 1/2"
- OVERALL LENGTH IS: 48 1/2"
- USABLE LENGTH IS: 47 3/4"
- OVERALL HEIGHT IS: 34 3/8" MIN
58 3/8" MAX
- HEIGHT ADJUSTMENT IN: 6" INCREMENTS
- PLATFORM HEIGHT IS: 23 1/4" RAISED
19 1/2" LOWERED
- 2" X 7" FORK POCKETS ON 27" CENTERS
- TOUGH BAKED IN POWDER COAT BLUE FINISH
- FEET MUST BE ANCHORED TO GROUND.

APPROVAL	I, THE UNDERSIGNED, AGREE THAT THE PRODUCT AS REPRESENTED SATISFIES DESIGN AND DIMENSION REQUIREMENTS. I ALSO ACKNOWLEDGE MY DUTY TO CONFIRM PRODUCT AND INSTALLATION COMPLIANCE WITH ALL APPLICABLE FEDERAL, STATE AND LOCAL REGULATIONS AND STANDARDS.	
	UNITS REQUIRING APPROVAL DRAWINGS OR MODIFIED ARE NON-RETURNABLE	
	[] As drawn [] As marked	
	Signed: _____ Date: _____	
Printed Name: _____		
LEAD TIME WILL START UPON RECEIPT OF SIGNED APPROVAL DRAWING		

FOR INTERNAL USE ONLY PROJECT SIGN OFF	
SALES	
ENG.	
FAB.	
POWER	

DISTRIBUTOR'S NAME:		P.O.#
VESTIL MANUFACTURING		X
		W.O.#
DRAWN BY: JGP	DATE: 8/4/2020	X
REFERENCE: X	SCALE: 1:20	FILE NAME:
QUOTED LEAD TIME: X	QUOTE #	16-007-504
	X	