

# FOLDING MEZZANINE LADDER, LAD-FM-96

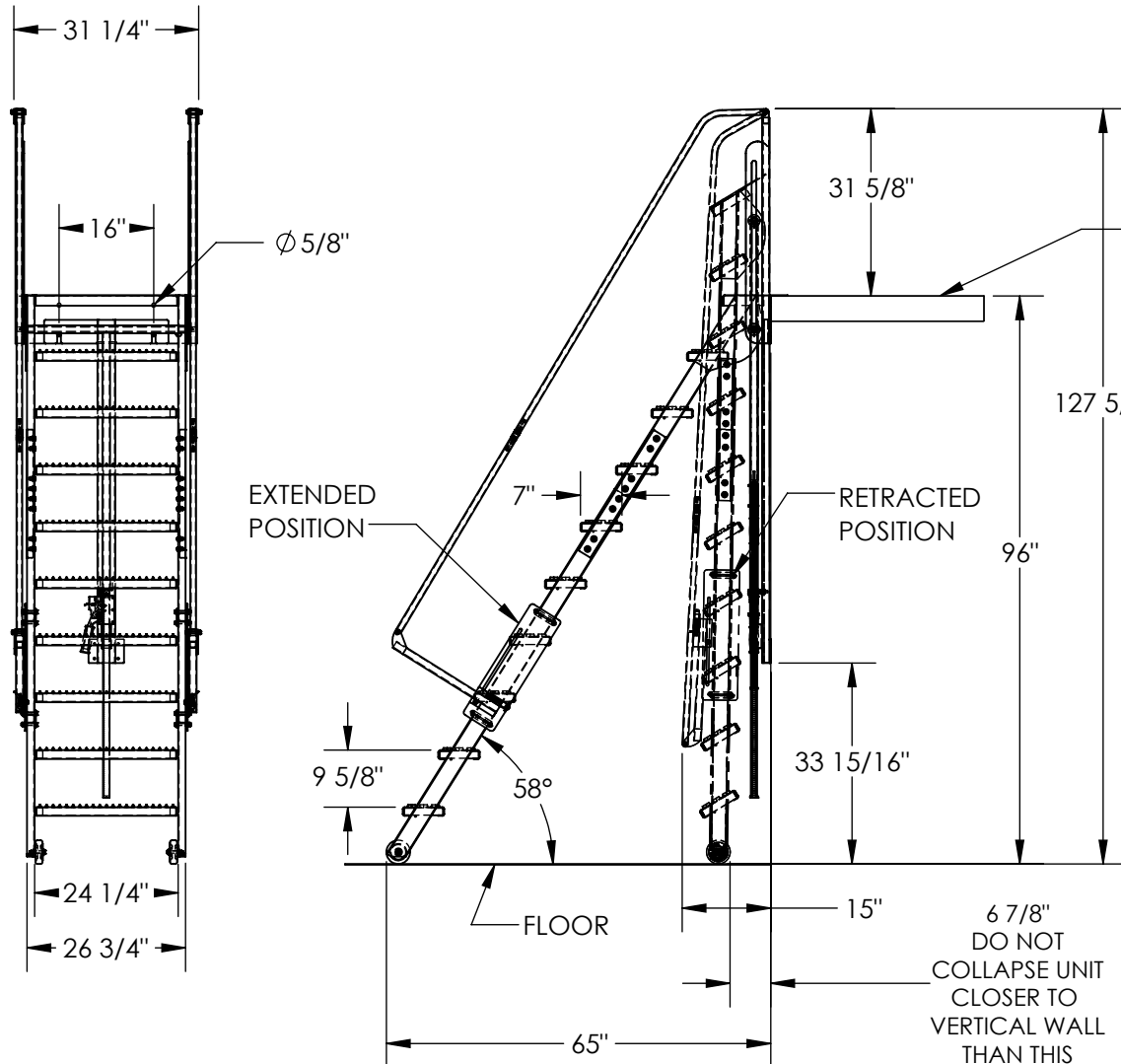
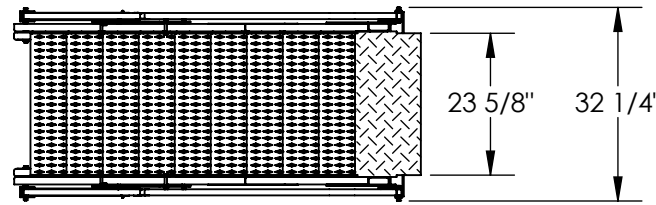
APPROX WEIGHT: 328.64 lbs.  
DOES NOT INCLUDE WEIGHT OF POWER OR PACKAGING!!!

\*\*\* ANY ADDITIONS, DELETIONS, OR OMISSIONS MUST BE CORRECTED ON THIS DRAWING AS THIS DRAWING WILL BE CONSIDERED ALL INCLUSIVE \*\*\*

ALL GRAPHICS PROVIDED ARE FOR REFERENCE ONLY. IF CERTAIN DIMENSIONS ARE CRITICAL PLEASE VERIFY THOSE DIMENSIONS WITH YOUR SALESPERSON

## STANDARD FEATURES

MODEL NUMBER: LAD-FM-96  
 OVERALL WIDTH: 32 1/4"  
 USABLE STEP WIDTH: 24 1/4"  
 HANDRAIL HEIGHT: 31 5/8"  
 STEP MATERIAL: SERRATED STEEL  
 STEP DEPTH: 7"  
 MAX CAPACITY: 350 LBS.  
 MEZZANINE HEIGHT: 96"  
 (MEZZANINE HEIGHT TOLERANCE: ± 1/2")  
 STEP HEIGHT SPACING: 9 5/8"  
 EXTENDED LENGTH: 65"  
 COLLAPSED LENGTH: 15" (APPROX.)  
 TOUGH BAKED IN POWDER COATED  
 BLUE AND YELLOW FINISH



MEZZANINE SHOWN FOR REFERENCE ONLY -NOT INCLUDED

## SPECIAL FEATURES

NONE

FOR INTERNAL USE ONLY	
PROJECT SIGN OFF	
SALES	
ENG.	
FAB.	
POWER	

IT IS THE CUSTOMER'S RESPONSIBILITY TO MAKE SURE THAT THIS UNIT COMPLIES WITH ALL LOCAL SAFETY LAWS, CODES AND REGULATIONS

DIMENSION TOLERANCE ± 1/4"

APPROVAL

I, THE UNDERSIGNED, AGREE THAT THE PRODUCT AS REPRESENTED SATISFIES DESIGN AND DIMENSION REQUIREMENTS. I ALSO ACKNOWLEDGE MY DUTY TO CONFIRM PRODUCT AND INSTALLATION COMPLIANCE WITH ALL APPLICABLE FEDERAL, STATE AND LOCAL REGULATIONS AND STANDARDS.

**ANY MODIFIED UNITS ARE NON-RETURNABLE**

[ ] As drawn [ ] As marked

Signed: \_\_\_\_\_ Date: \_\_\_\_\_

Printed Name: \_\_\_\_\_

LEAD TIME WILL START UPON RECEIPT OF SIGNED APPROVAL DRAWING

DISTRIBUTOR'S NAME:		P.O.#
VESTIL MANUFACTURING		X
DRAWN BY: TAW		W.O.#
DATE: 1/4/2017		X
REFERENCE: X	SCALE: 1:32	SALES: X
QUOTED LEAD TIME: X	QUOTE #	FILE NAME:
	X	44-007-593