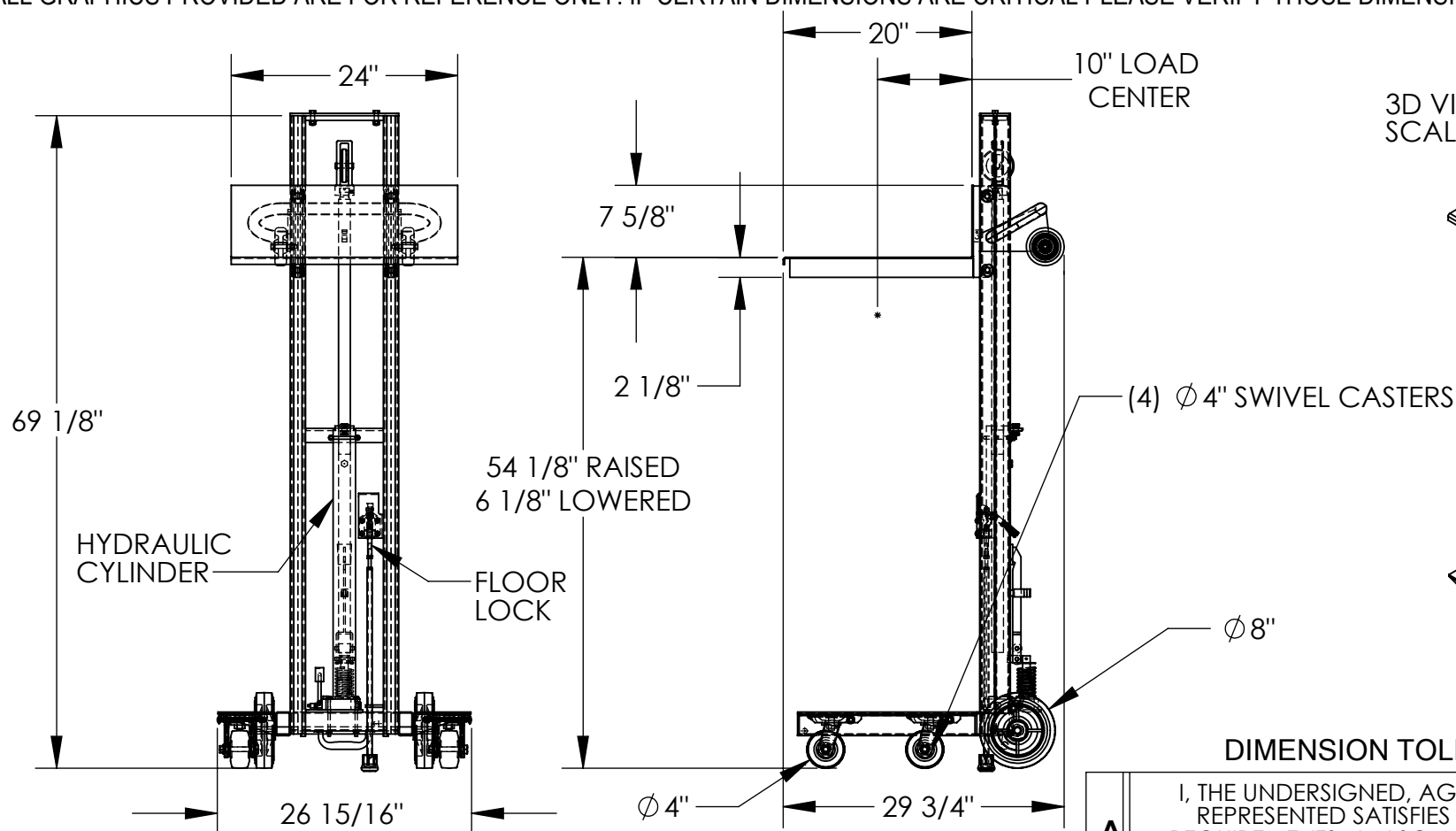


LOW PROFILE LITE LOAD LIFT - LLH-242056-4SFL

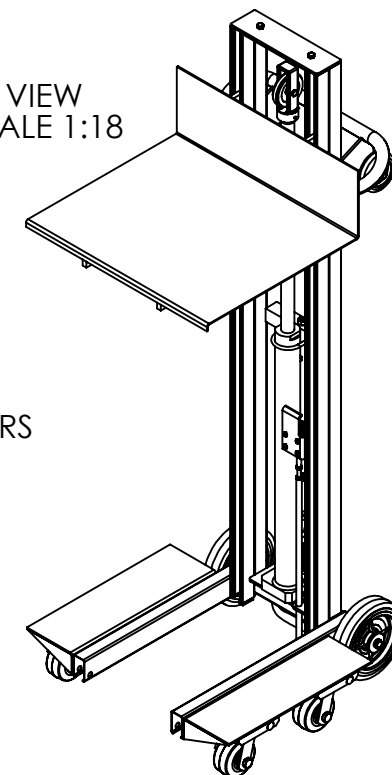
APPROX WEIGHT: 259.80 lbs.
DOES NOT INCLUDE WEIGHT OF POWER OR PACKAGING!!!

*** ANY ADDITIONS, DELETIONS, OR OMISSIONS MUST BE CORRECTED ON THIS DRAWING AS THIS DRAWING WILL BE CONSIDERED ALL INCLUSIVE ***

ALL GRAPHICS PROVIDED ARE FOR REFERENCE ONLY. IF CERTAIN DIMENSIONS ARE CRITICAL PLEASE VERIFY THOSE DIMENSIONS WITH YOUR SALESPERSON



3D VIEW
SCALE 1:18



DIMENSION TOLERANCE $\pm 1/4"$

APPROVAL

I, THE UNDERSIGNED, AGREE THAT THE PRODUCT AS REPRESENTED SATISFIES DESIGN AND DIMENSION REQUIREMENTS. I ALSO ACKNOWLEDGE MY DUTY TO CONFIRM PRODUCT AND INSTALLATION COMPLIANCE WITH ALL APPLICABLE FEDERAL, STATE AND LOCAL REGULATIONS AND STANDARDS.
UNITS REQUIRING APPROVAL DRAWINGS OR MODIFIED ARE NON-RETURNABLE
[] As drawn [] As marked

Signed: _____ Date: _____

Printed Name: _____

LEAD TIME WILL START UPON RECEIPT OF SIGNED APPROVAL DRAWING

DISTRIBUTOR'S NAME:

VESTIL MANUFACTURING

P.O.# X

W.O.# X

DRAWN BY: WHR

DATE: 01/18/2012

SALES: X

REFERENCE: X

SCALE: 1:18

FILE NAME:

QUOTED LEAD TIME: X

QUOTE # X

21-007-006

STANDARD FEATURES

MODEL NUMBER: LLH-242056-4SFL
CAPACITY: 400 LBS.
PLATFORM WIDTH: 24"
PLATFORM LENGTH: 20"
OVERALL WIDTH: 26 15/16"
OVERALL LENGTH: 29 3/4"
OVERALL HEIGHT: 69 1/8"
RAISED HEIGHT: 54 1/8"
LOWERED HEIGHT: 6 1/8"
FOOT PUMP OPERATION
HAND OPERATED FLOOR LOCK
STEEL CONSTRUCTION
TOUGH BAKED IN POWDER COATED BLUE FINISH

SPECIAL FEATURES

NONE