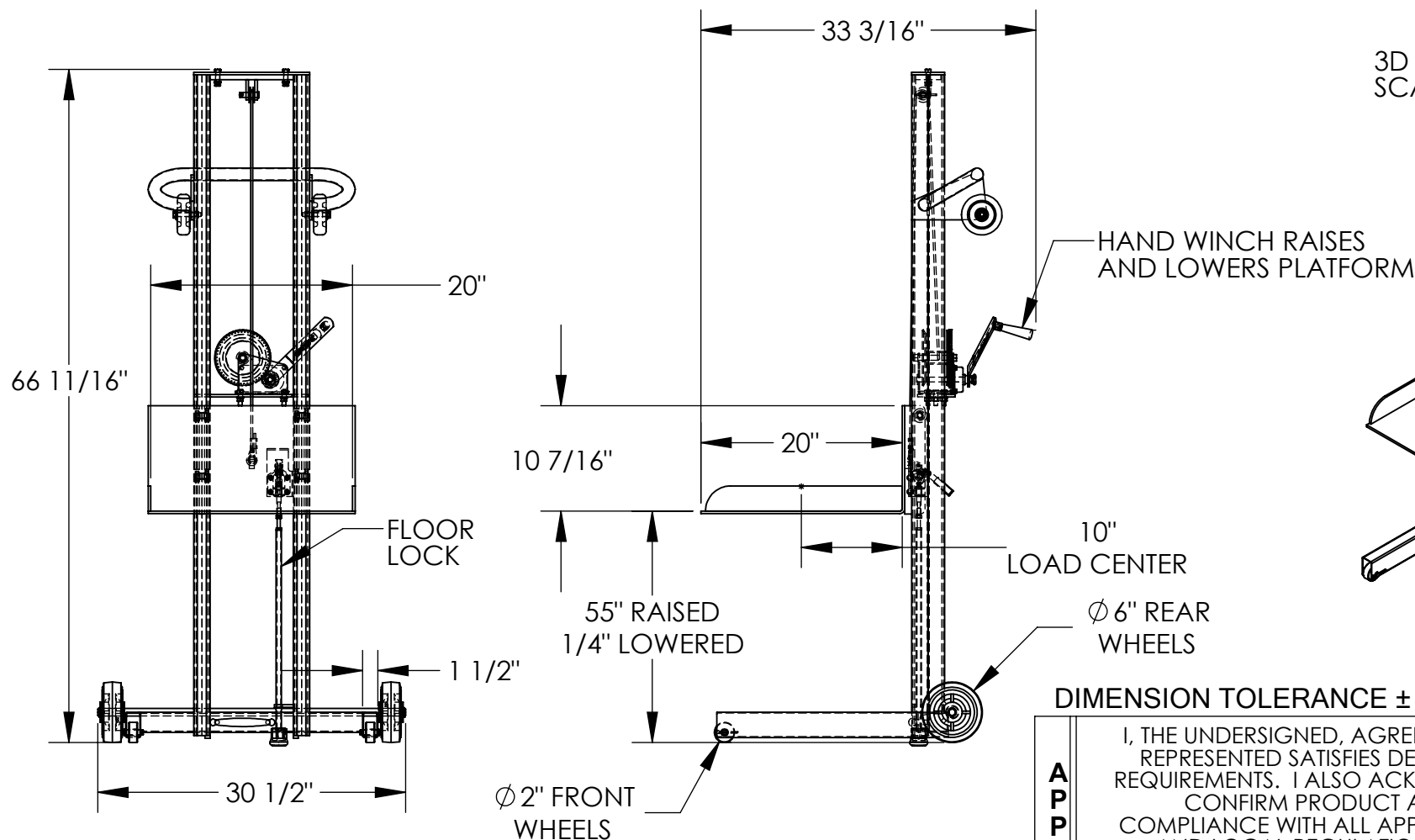


LITE LOAD LIFT - LLPW-500-FWFL

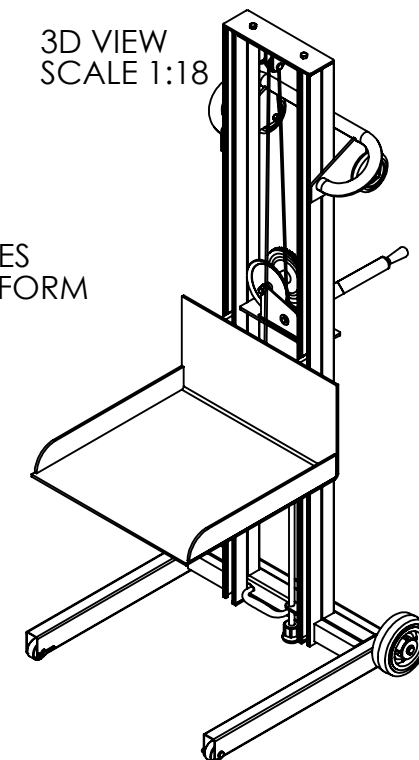
APPROX WEIGHT: 181.37 lbs.
DOES NOT INCLUDE WEIGHT OF POWER OR PACKAGING!!!

*** ANY ADDITIONS, DELETIONS, OR OMISSIONS MUST BE CORRECTED ON THIS DRAWING AS THIS DRAWING WILL BE CONSIDERED ALL INCLUSIVE ***

ALL GRAPHICS PROVIDED ARE FOR REFERENCE ONLY. IF CERTAIN DIMENSIONS ARE CRITICAL PLEASE VERIFY THOSE DIMENSIONS WITH YOUR SALESPERSON



3D VIEW
SCALE 1:18



DIMENSION TOLERANCE $\pm 1/4"$

APPROVAL

I, THE UNDERSIGNED, AGREE THAT THE PRODUCT AS REPRESENTED SATISFIES DESIGN AND DIMENSION REQUIREMENTS. I ALSO ACKNOWLEDGE MY DUTY TO CONFIRM PRODUCT AND INSTALLATION COMPLIANCE WITH ALL APPLICABLE FEDERAL, STATE AND LOCAL REGULATIONS AND STANDARDS.
UNITS REQUIRING APPROVAL DRAWINGS OR MODIFIED ARE NON-RETURNABLE
[] As drawn [] As marked

Signed: _____ Date: _____

Printed Name: _____

LEAD TIME WILL START UPON RECEIPT OF SIGNED APPROVAL DRAWING

DISTRIBUTOR'S NAME:		P.O.#
VESTIL MANUFACTURING		X
DRAWN BY: MTS		W.O.#
DATE: 07/20/20		X
REFERENCE: X	SCALE: 1:16	SALES: X
QUOTED LEAD TIME: X	QUOTE # X	FILE NAME: 21-007-159

STANDARD FEATURES

MODEL NUMBER: LLPW-500-FWFL
CAPACITY: 400 LBS.
PLATFORM WIDTH: 20"
PLATFORM LENGTH: 20"
OVERALL WIDTH: 30 1/2"
OVERALL LENGTH: 33 3/16"
OVERALL HEIGHT: 66 11/16"
RAISED HEIGHT: 55"
LOWERED HEIGHT: 1/4"
HAND WINCH OPERATION
HAND OPERATED FLOOR LOCK
STEEL CONSTRUCTION
TOUGH BAKED IN POWDER COATED BLUE FINISH

SPECIAL FEATURES

NONE