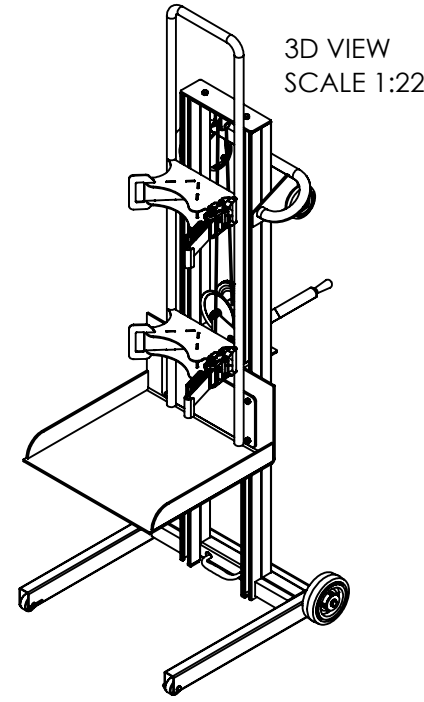
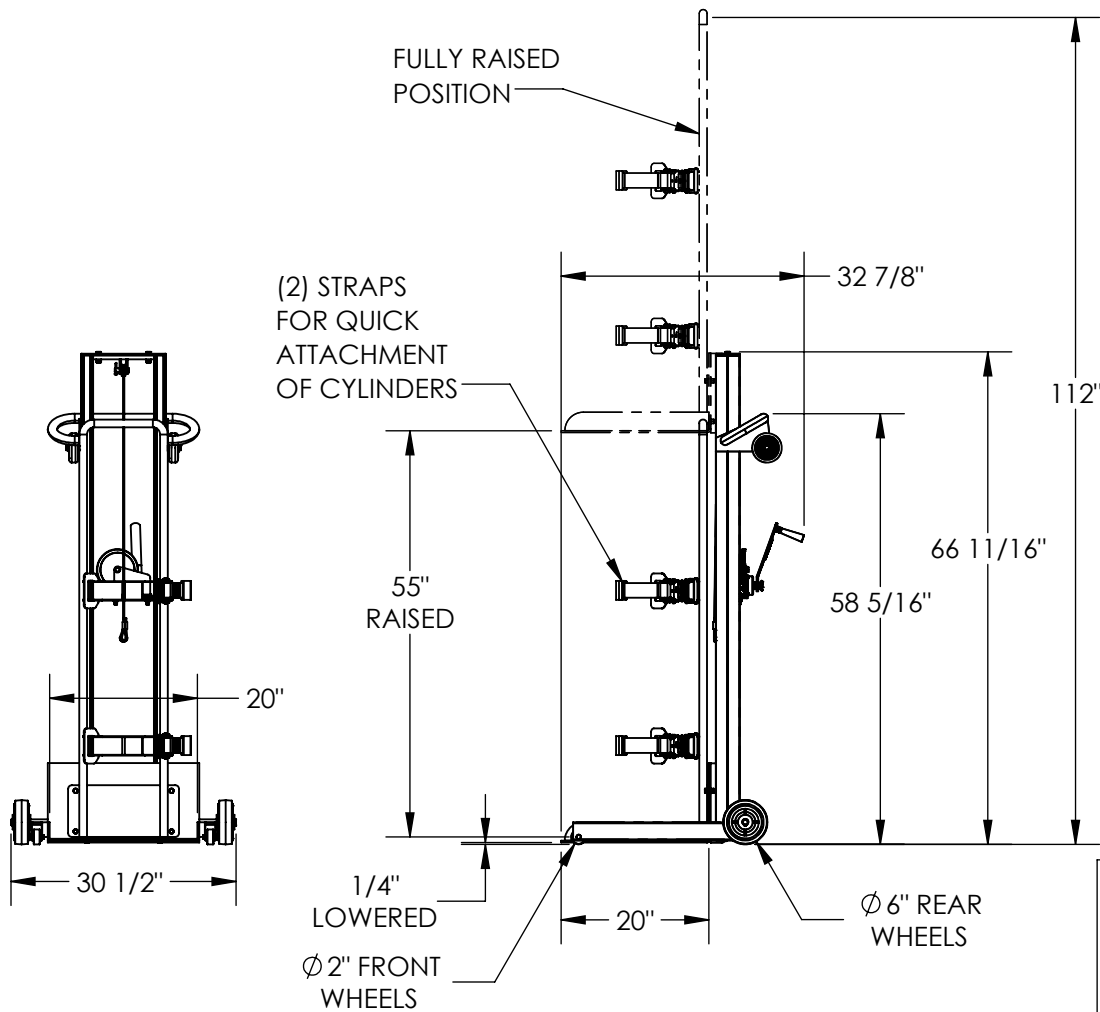


APPROX WEIGHT: 216 lbs.  
DOES NOT INCLUDE WEIGHT OF POWER OR PACKAGING!!!

# GAS CYLINDER LIFT - LLPW-CL-1560

\*\*\* ANY ADDITIONS, DELETIONS, OR OMISSIONS MUST BE CORRECTED ON THIS DRAWING AS THIS DRAWING WILL BE CONSIDERED ALL INCLUSIVE \*\*\*  
ALL GRAPHICS PROVIDED ARE FOR REFERENCE ONLY. IF CERTAIN DIMENSIONS ARE CRITICAL PLEASE VERIFY THOSE DIMENSIONS WITH YOUR SALESPERSON



DIMENSION TOLERANCE ± 1/4"

## STANDARD FEATURES

MODEL NUMBER IS LLPW-CL-1560  
MAX. GAS CYLINDER SIZE  
Ø11 1/2" x 56" TALL  
OVERALL WIDTH IS 30 1/2"  
OVERALL LENGTH IS 32 7/8"  
OVERALL HEIGHT IS 112"  
MAX CAPACITY IS 300 LBS  
RAISED HEIGHT: 55"  
LOWERED HEIGHT: 1/4"  
HAND WINCH OPERATION  
Ø6" REAR WHEELS  
STEEL CONSTRUCTION  
TOUGH BAKED IN POWDER COATED BLUE FINISH CART  
TOUGH BAKED IN POWDER COATED YELLOW CYLINDER MOUNT

## SPECIAL FEATURES

NONE

APPROVAL	I, THE UNDERSIGNED, AGREE THAT THE PRODUCT AS REPRESENTED SATISFIES DESIGN AND DIMENSION REQUIREMENTS. I ALSO ACKNOWLEDGE MY DUTY TO CONFIRM PRODUCT AND INSTALLATION COMPLIANCE WITH ALL APPLICABLE FEDERAL, STATE AND LOCAL REGULATIONS AND STANDARDS.	
	<b>UNITS REQUIRING APPROVAL DRAWINGS OR MODIFIED ARE NON-RETURNABLE</b>	
	[ ] As drawn [ ] As marked	
	Signed: _____ Date: _____	
Printed Name: _____		
LEAD TIME WILL START UPON RECEIPT OF SIGNED APPROVAL DRAWING		

DISTRIBUTOR'S NAME:		P.O.#
VESTIL MANUFACTURING		X
DRAWN BY: M.SHOAFF		W.O.#
DATE: 07/11/2020		X
REFERENCE: X	SCALE: 1:26	SALES: X
QUOTED LEAD TIME: X	QUOTE # X	FILE NAME:
		42-007-025